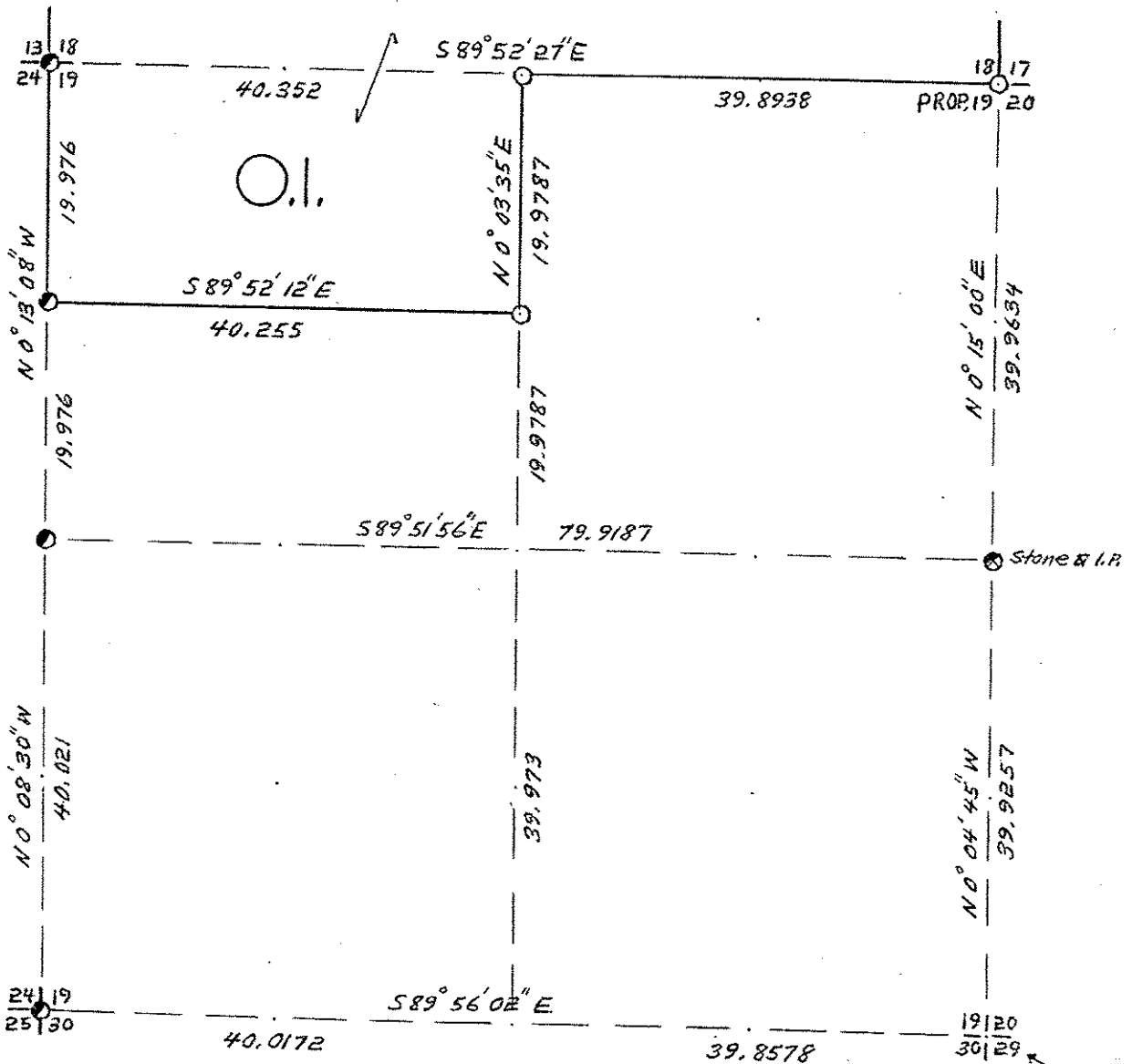


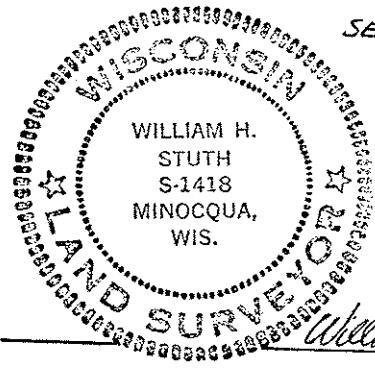
SEC. 19, T. 32 N., R. 5 E., LINCOLN COUNTY, WIS.



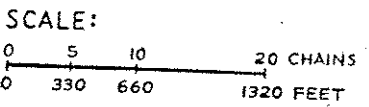
For Cor. Info.
SEE
SEC. 20 MAP

COR. BT. CODE
A B C D E
F G H I J
K L M N O
P Q R S T
U V W X Y

C - 6" R.M. S74E 26.2'
12" H.M. S42E 40.0'
18" " N43W 5.2'
E - 7" R.M. N28W 13.4'
7" B.A. N22E 22.3'
8" B.F. S2°W 22.2'
F - 10" B.A. N47W 14.2'
H - 13" B.A. S34W 38.5'
14" H.M. N24W 49.5'



William H. Stuth



LEGEND: CORNERS & LINES

- IRON PIPE OR CAP
- ⊙ CONCRETE
- ⊕ POST
- △ STAKE
- ⊕ SPIKE
- BY OTHERS
- BLAZED - PAINTED
- BLAZED
- == APPR. - PAINTED
- - - RANDOM
- x x x FENCE

S317B

OWENS-ILLINOIS
TOMAHAWK (I) WISCONSIN
FOREST PRODUCTS DIVISION

Boundary Survey

DRAWN BY *Wm. H. Stuth*

DATE *4/20/83*