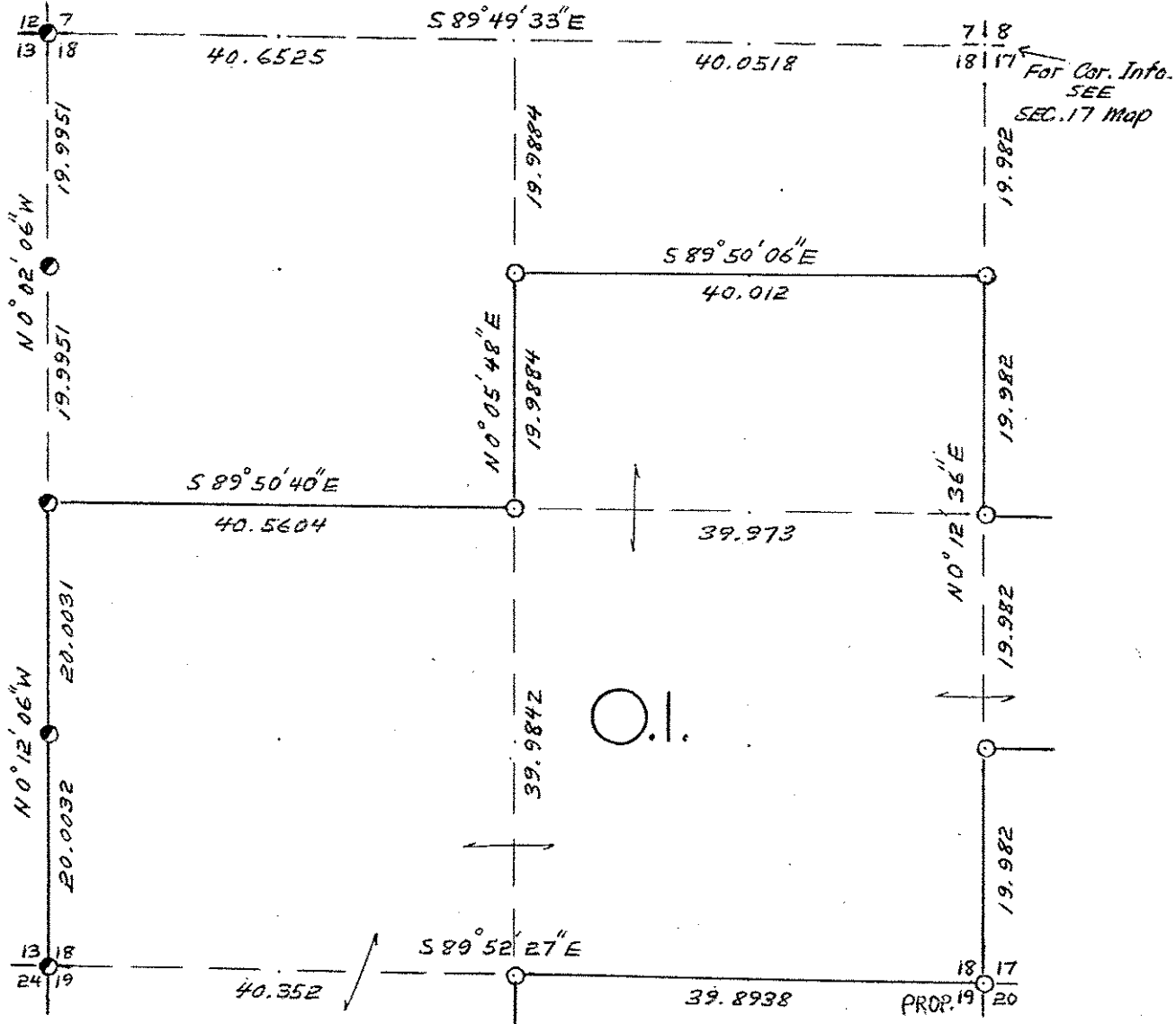


SEC. 18, T. 32 N., R. 5 E., LINCOLN COUNTY, WIS.



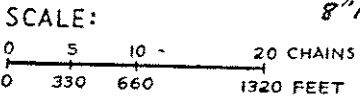
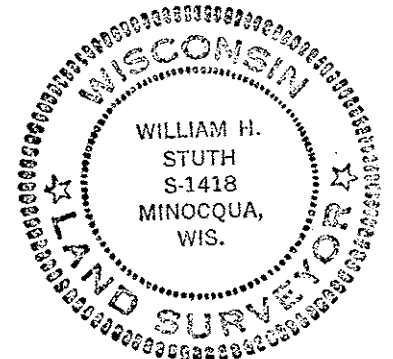
For Cor. Info.
SEE
SEC. 17 Map

O.I.

COR. BT. CODE

A	B	C	D	E
F	G	H	I	J
K	L	M	N	O
P	Q	R	S	T
U	V	W	X	Y

- H- 11" R.M. S76W 24.5'
8" W.A. S32E 5.4'
- J- 8" R.M. N36W 12.0'
14" " N55E 13.4'
- M- 11" H.M. N60W 18.4'
7" B.A. N17E 7.3'
- O- 7" H.M. N26E 24.7'
9" Y.B. 50° 19.0'
- T- 14" B.A. S82W 26.2'
8" R.M. S5°E 13.8'
- W- 6" R.M. S74E 26.2'
12" H.M. S42E 40.0'
18" " N43W 5.2'
- Y- 7" R.M. N28W 13.4'
7" B.A. N22E 22.3'
8" B.F. S2°W 22.2'



LEGEND: CORNERS & LINES

○ IRON PIPE OR CAP	== BLAZED - PAINTED
⊗ CONCRETE	— BLAZED
⊕ POST	== APPR. - PAINTED
△ STAKE	- - - RANDOM
† SPIKE	x x x FENCE
● BY OTHERS	

William H. Stuth

OWENS-ILLINOIS <small>TOMAHAWK (I) WISCONSIN</small> FOREST PRODUCTS DIVISION	
<i>Boundary Survey</i>	
DRAWN BY <i>Wm. H. Stuth</i>	
DATE <i>4/20/83</i>	

S316B