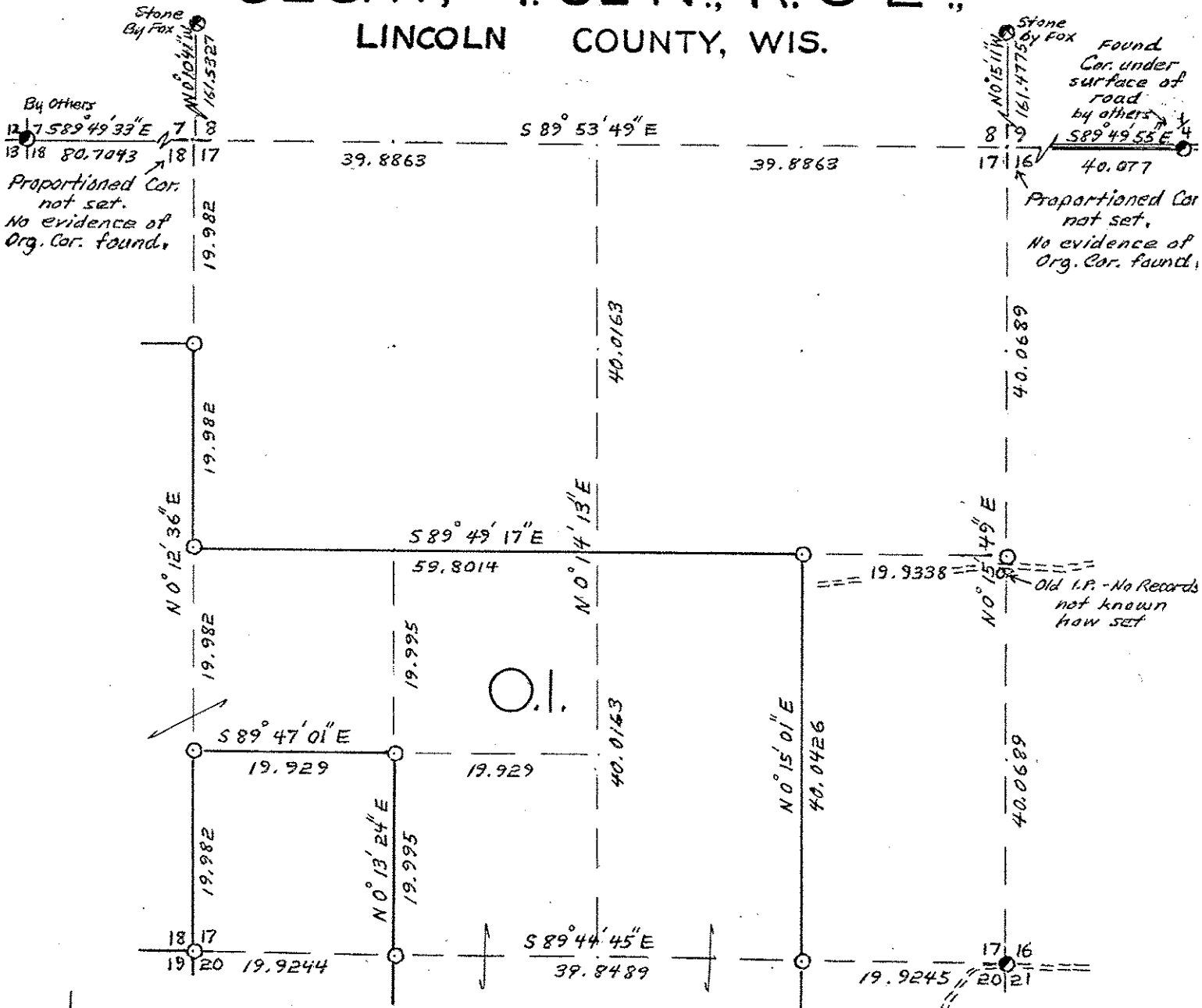
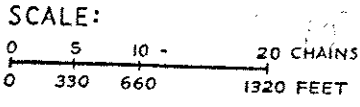


# SEC. 17, T. 32 N., R. 5 E., LINCOLN COUNTY, WIS.

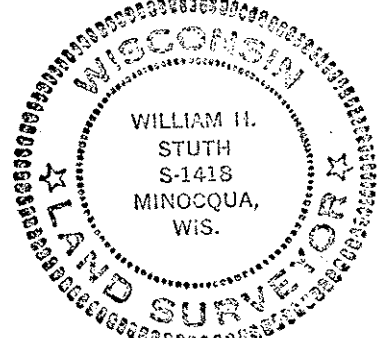


COR. BT. CODE  
 A B C D E  
 F G H I J  
 K L M N O  
 P Q R S T  
 U V W X Y

- F- 8" R.M. N36W 12.0'
- 14" " N55E 13.4'
- K- 7" H.M. N26E 24.7'
- 9" Y.B. S0° 19.0'
- N- 6" Tam. S9°W 36.9'
- 6" " S55E 16.9'
- O- 11" R.M. S7°W 24.3'
- 6" " N7°W 23.3'
- 7" " N78W 28.3'
- P- 14" B.A. S82W 26.2'
- 8" R.M. S5°E 13.8'
- Q- 7" B.A. S54E 7.0'
- 6" R.M. S24W 24.2'
- U- 7" R.M. N28W 13.4'
- 7" B.A. N22E 22.3'
- 8" B.F. S2°W 22.2'
- V- 6" R.M. N40W 16.8'
- 6" " N14E 30.0'
- X- 10" B.A. S68E 10.2'
- 10" S.M. S48W 3.9'



- LEGEND: CORNERS & LINES
- IRON PIPE OR CAP
  - ⊗ CONCRETE
  - ⊕ POST
  - △ STAKE
  - † SPIKE
  - BY OTHERS
  - == BLAZED - PAINTED
  - BLAZED
  - == APPR. - PAINTED
  - RANDOM
  - xxx FENCE



*William H. Stuth*

<b>OWENS-ILLINOIS</b> TOMAHAWK (I) WISCONSIN FOREST PRODUCTS DIVISION	
Boundary Survey	
DRAWN BY <i>Wm. H. Stuth</i>	
DATE <i>4/20/83</i>	

S315A

SEC. 17, T. 32 N., R. 5 E.,  
LINCOLN COUNTY, WIS.

B FILE

STATEMENT Transit & Chain Surv. using corners  
& evidence found

See Large work sheet in file

RECORDS EXAMINED \_\_\_\_\_ DWG. NO. \_\_\_\_\_

Org. Surv.

County

Received from:  
Nekoosa Papers Inc  
Forest District Office  
Minocqua, WI  
54348

LOCAL CONTACTS \_\_\_\_\_

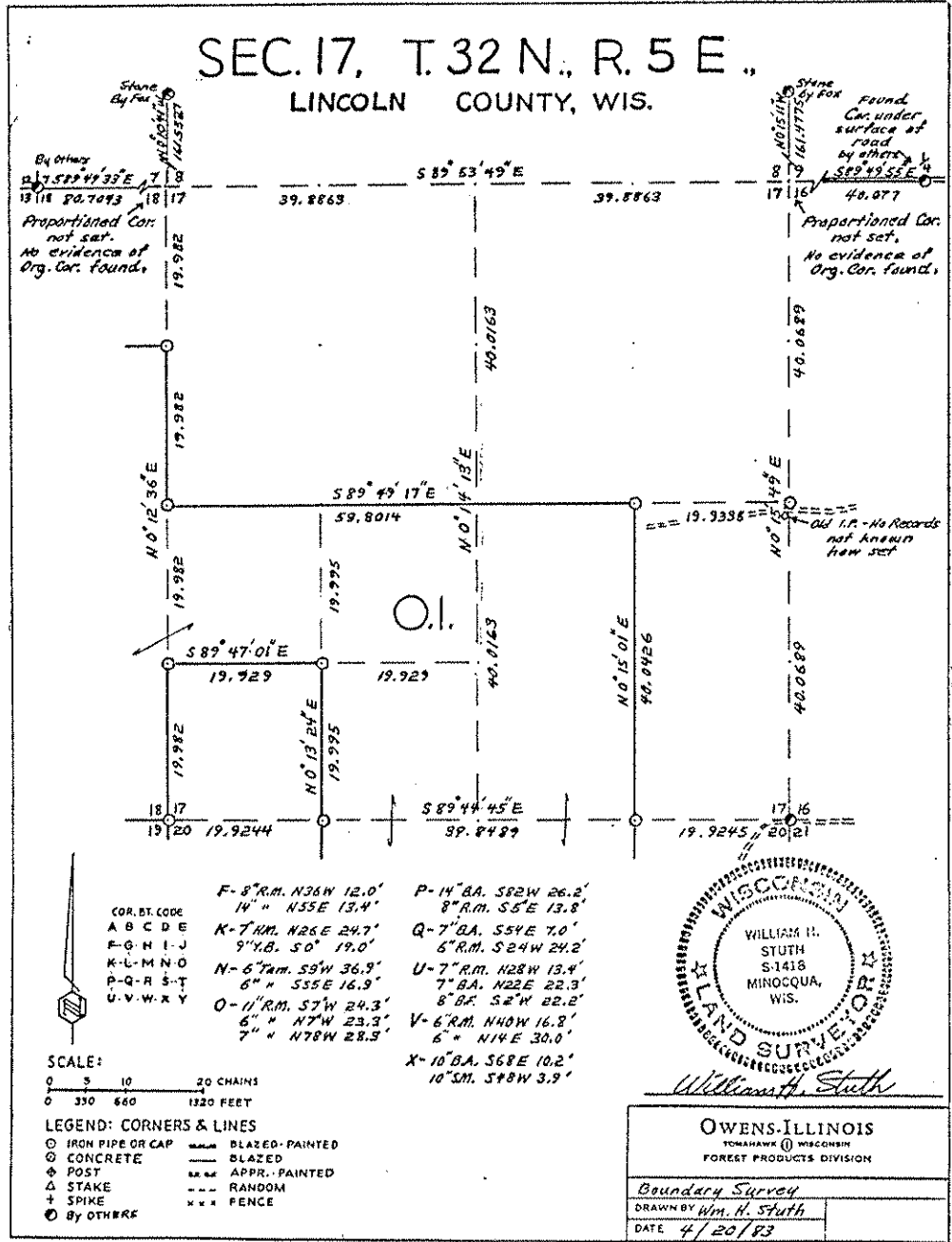
REMARKS \_\_\_\_\_

RECEIVED AT LINCOLN COUNTY  
COURTHOUSE THIS 18 DAY  
OF April 1989.

Sat Friebel

TAX DESCRIPTION OFFICE

S315B



Prepared By W. H. Stuth 3/6/87