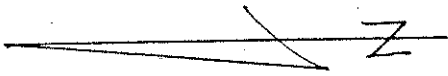
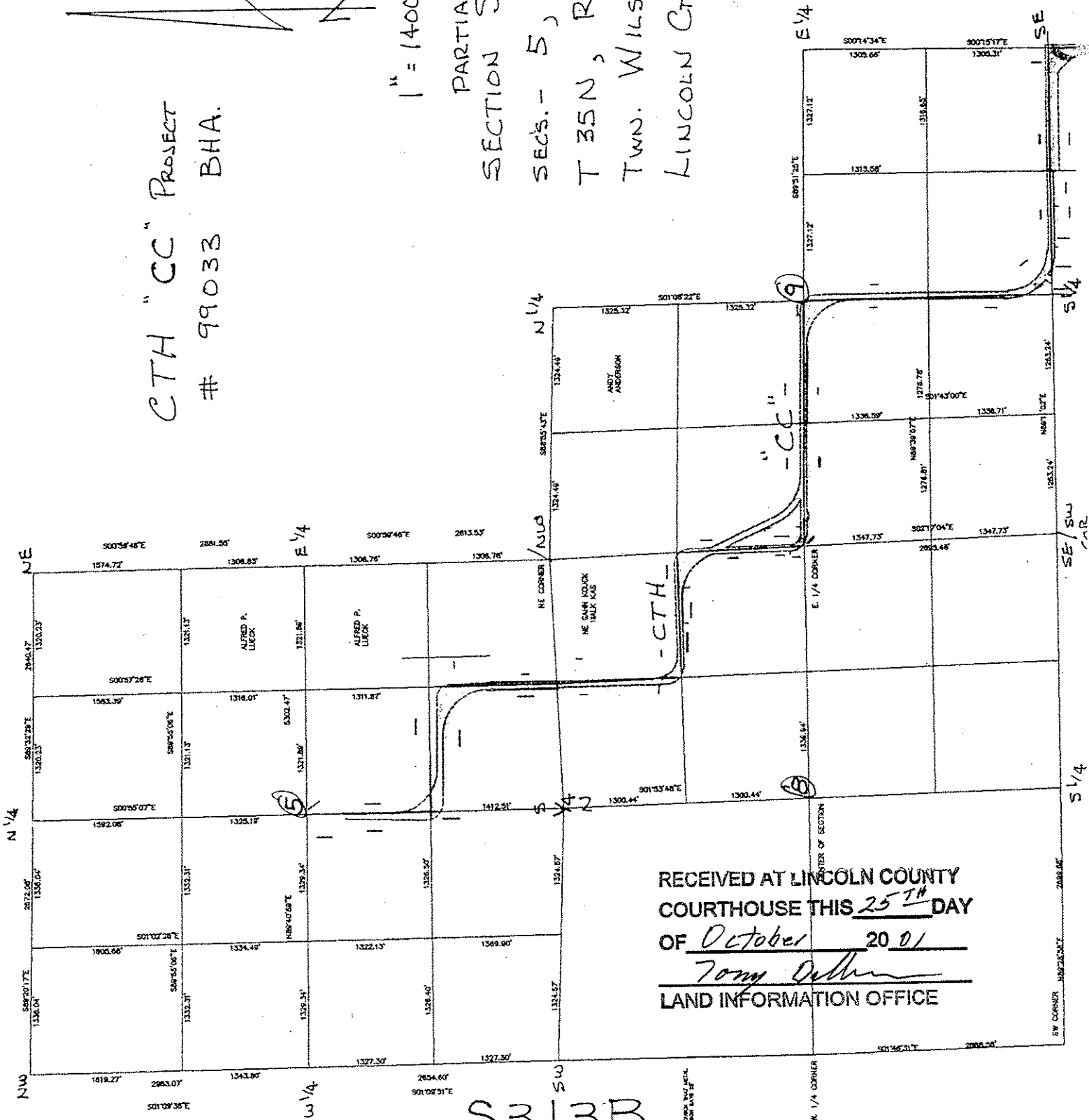


CTH "CC" PROJECT  
# 99033 BHA.



1" = 1400' ±

PARTIAL  
SECTION SUMMARY  
SECS. - 5, 8, 9  
T 35N, R 5E,  
TWN. WILSON,  
LINCOLN CTY, WI.



RECEIVED AT LINCOLN COUNTY  
COURTHOUSE THIS 25<sup>TH</sup> DAY  
OF October 20 01  
Tommy DeBruin  
LAND INFORMATION OFFICE

S313B