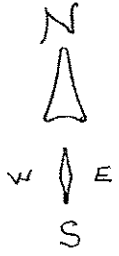


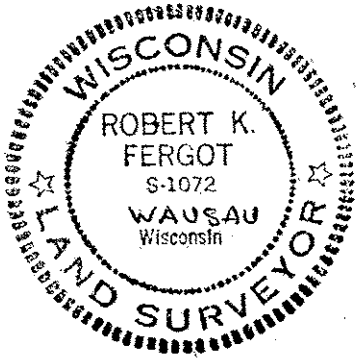
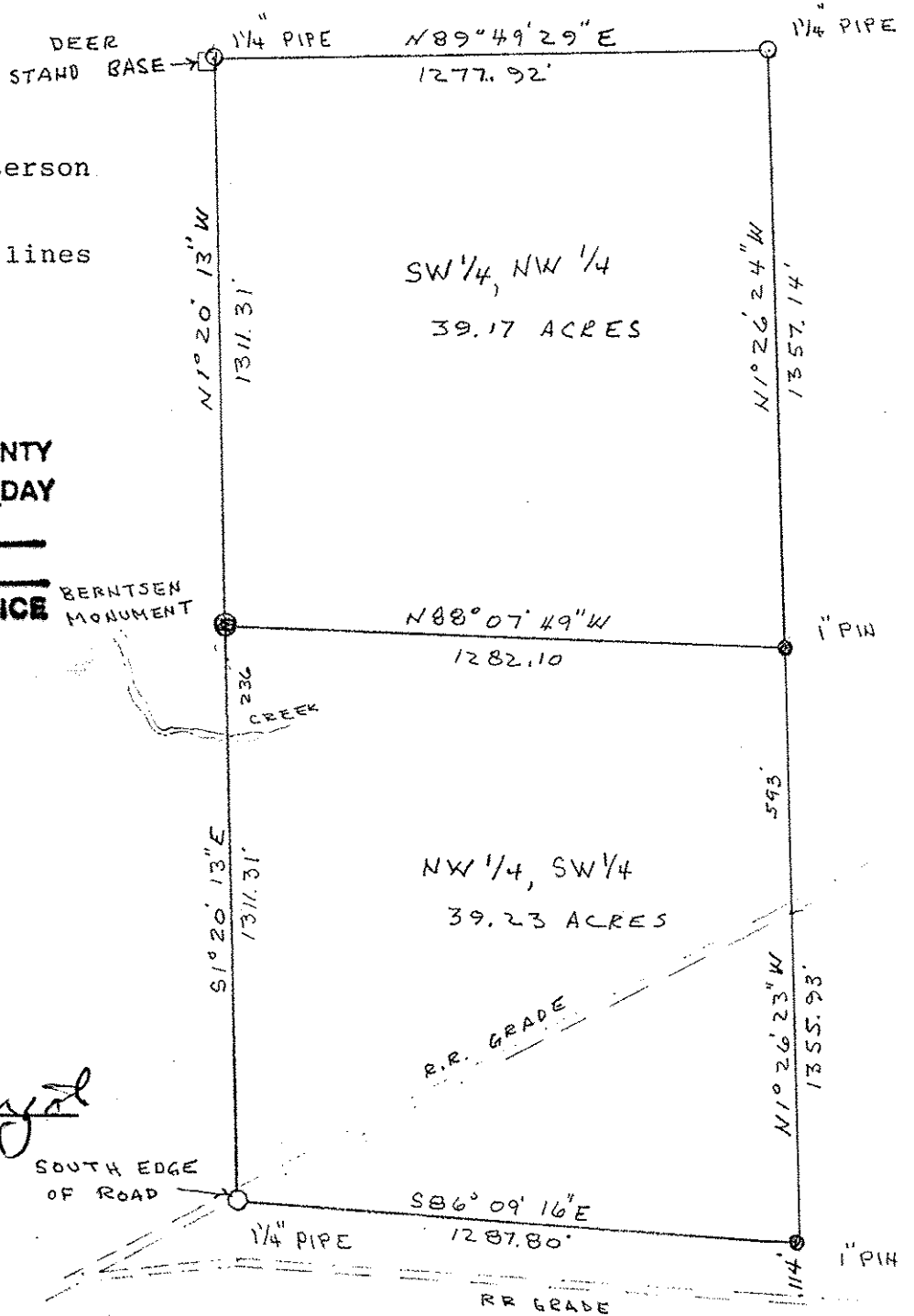
SECTION 22, T33N, R4E
TOWN OF CORNING



1" = 400'

Surveyed for Tom Peterson
in November, 1997.
East lines and west lines
were cut lines.

RECEIVED AT LINCOLN COUNTY
COURTHOUSE THIS 4th DAY
OF Feb 19 99
Pat Friebe
LAND INFORMATION OFFICE



Robert K. Fergot
Robert K. Fergot
January 29, 1999

S309A