

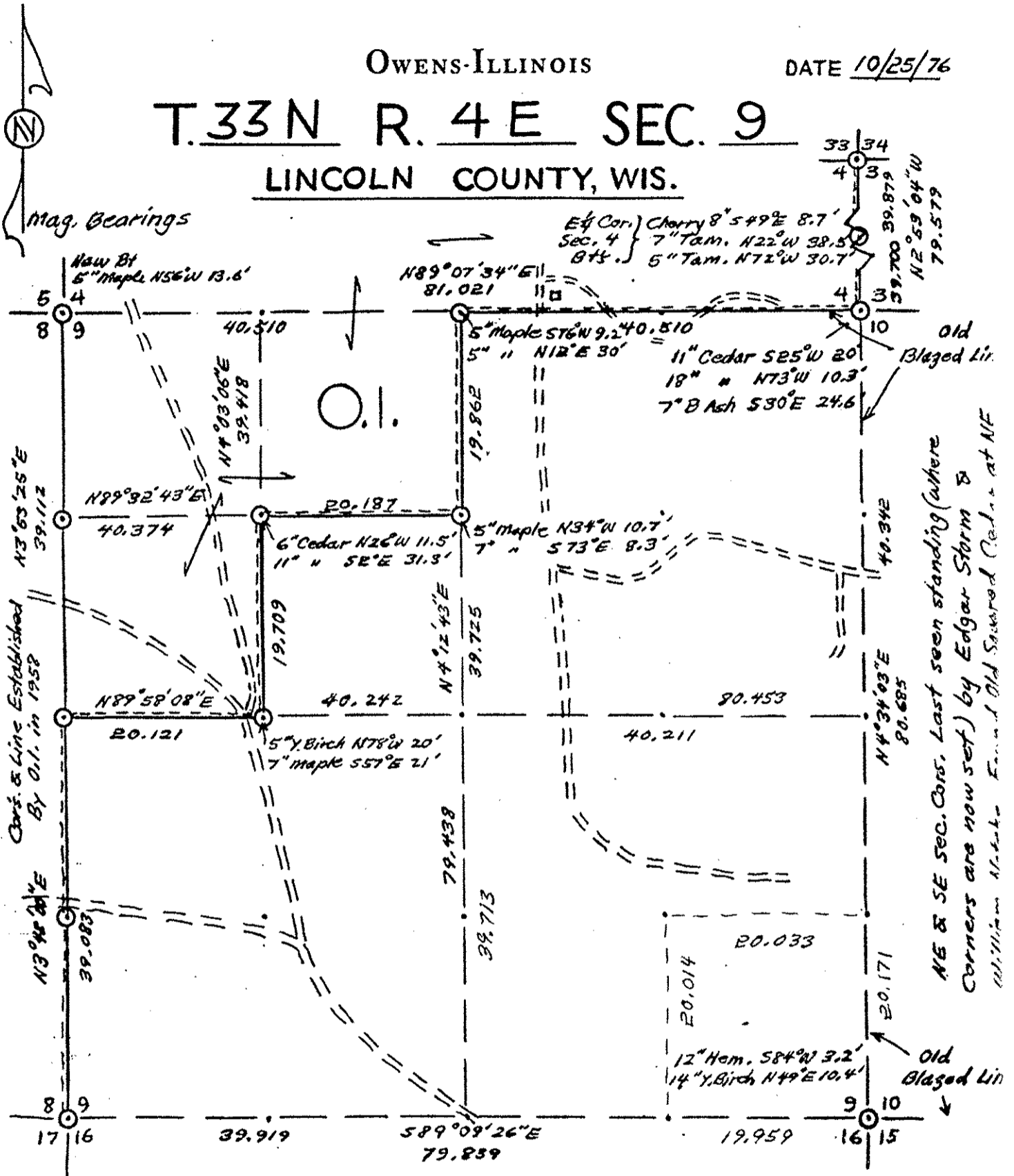
NW-571

OWENS-ILLINOIS

DATE 10/25/76

T. 33 N R. 4 E SEC. 9

LINCOLN COUNTY, WIS.



Cors. & Lines Established By Oil. in 1958

NE & SE Sec. Cors. Last seen standing (where corners are now set) by Edgar Storm & William M. ... Found Old Sawned Cedar at NE

LEGEND CORNERS & LINES

- ⊙ Iron Pipe or Cap
- ⊗ Concrete
- ⊠ Wood Post
- △ Stake
- X Hub
- + Spike

- ===== True - Blazed - Painted
- ===== True Cut - Blazed
- Approximate - Painted
- Random
- xxxxx Fence
- - - - R.O.W.

MAP BY
W.H. Stuth
Survey By Oil.
Stuth & Henkle

Scale 1 1/2" = 1320.0'
OR 20,000 chains

RECEIVED AT LINCOLN COUNTY
COURTHOUSE THIS 7th DAY
OF Jul ~~1976~~ 2000
Pat Pruebe
LAND INFORMATION OFFICE

S307B