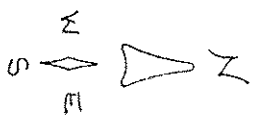
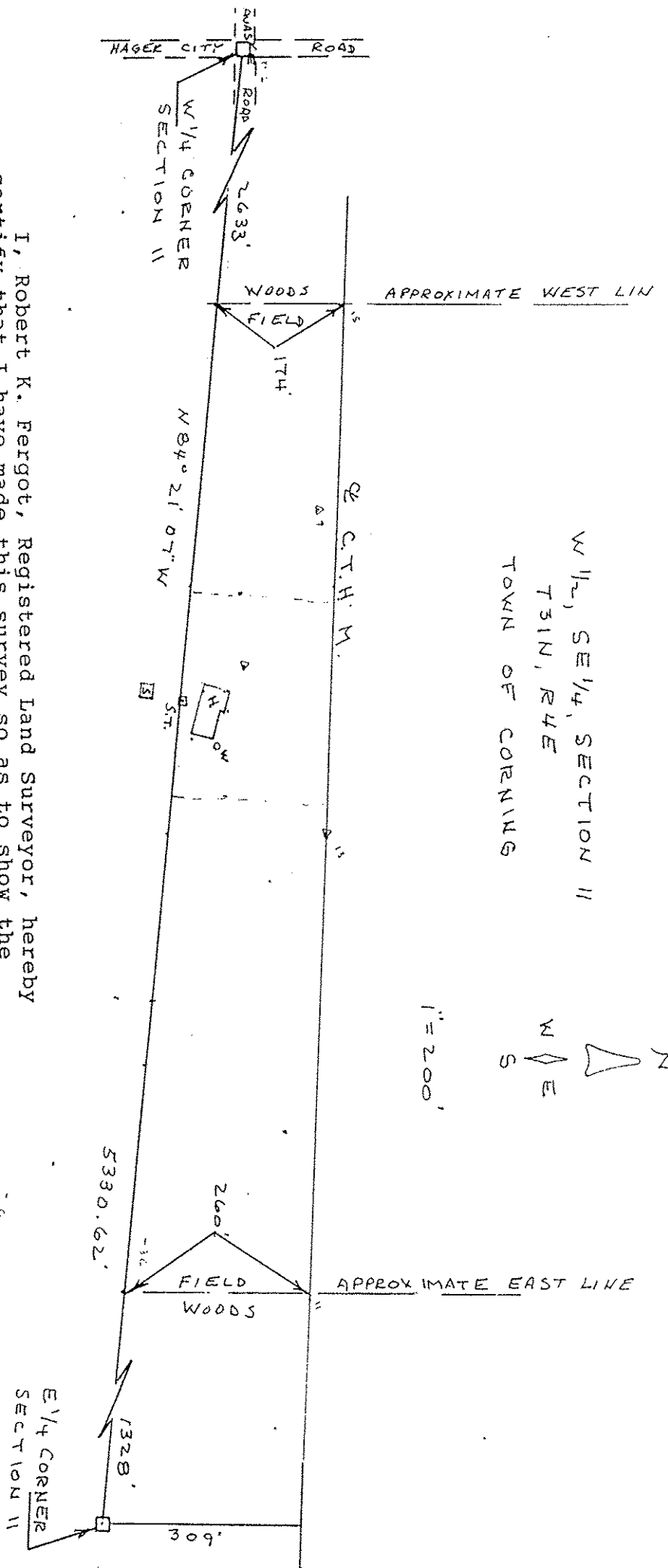


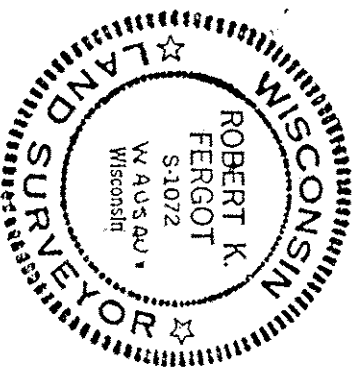
W 1/2, SE 1/4, SECTION 11  
T31N, R4E  
TOWN OF CORNING



1" = 200'



I, Robert K. Fergot, Registered Land Surveyor, hereby certify that I have made this survey so as to show the location of the south line of the W 1/2 of the SE 1/4 of Section 11, T31N, R4E, Town of Corning, and the improvements near said south line, at the direction of George G. Russell



RECEIVED AT LINCOLN COUNTY  
COURTHOUSE THIS 24th DAY  
OF July 19 97  
Geo G Russell  
TAX DESCRIPTION OFFICE

Robert K. Fergot

July 22, 1997

5304A