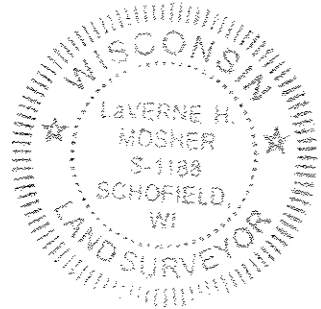
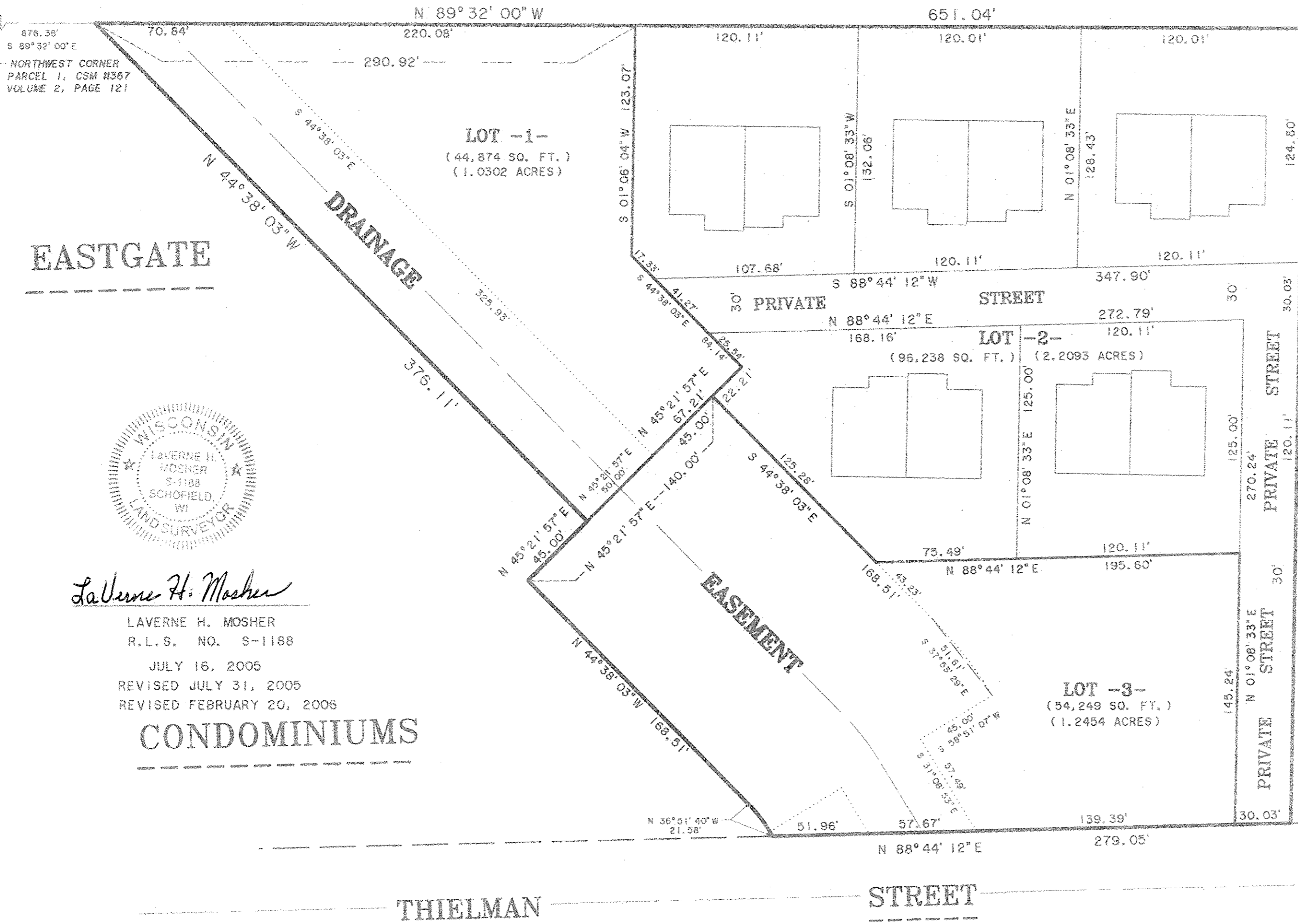


PROPOSED EXPANSION OF
EASTGATE CONDOMINIUMS



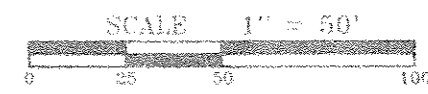
Laverne H. Mosher

LAVERNE H. MOSHER
R.L.S. NO. S-1188
JULY 16, 2005
REVISED JULY 31, 2005
REVISED FEBRUARY 20, 2006

CONDOMINIUMS

WHISPERING PINES MOBILE HOME COURT

RECEIVED BY LINCOLN COUNTY
SURVEYOR THIS 2ND DAY
OF January 29 09
Tom Rapp
COUNTY SURVEYOR



BEARINGS REFERENCED TO CERTIFIED SURVEY MAP NUMBER 367.

S286

SOUTH 1/4 CORNER
SECTION 7-31-7
LINCOLN COUNTY
BERNTSEN MONUMENT

M2957R