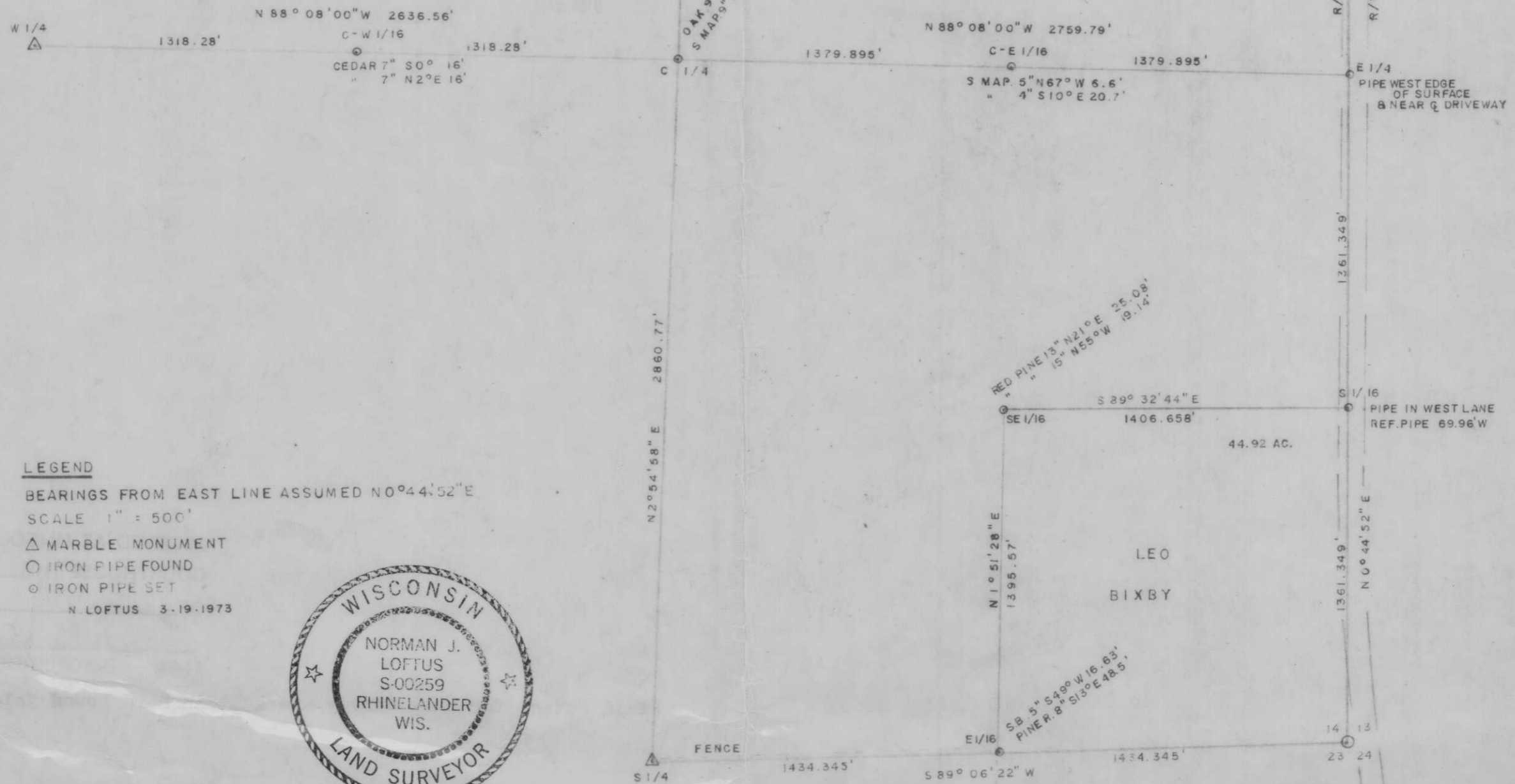
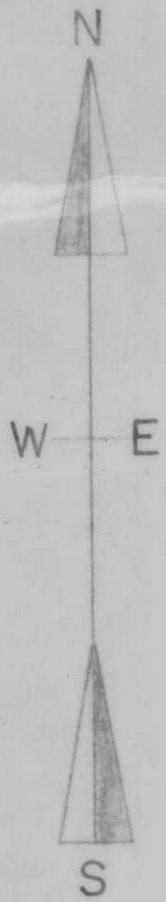


PART OF SECTION 14,
T35N, R8E LINCOLN CO.



LEGEND

- BEARINGS FROM EAST LINE ASSUMED N 0° 44' 52" E
- SCALE 1" = 500'
- △ MARBLE MONUMENT
- IRON PIPE FOUND
- ◉ IRON PIPE SET
- N. LOFTUS 3-19-1973



DRWG. NO. 147

RECEIVED AT LINCOLN COUNTY
 COURTHOUSE THIS 6 DAY
 OF August 1973.
Robert R. Priebe
 TAX DESCRIPTION OFFICE

FOR CORRECTED SURVEY SEE
 MAP L21

S 25 A