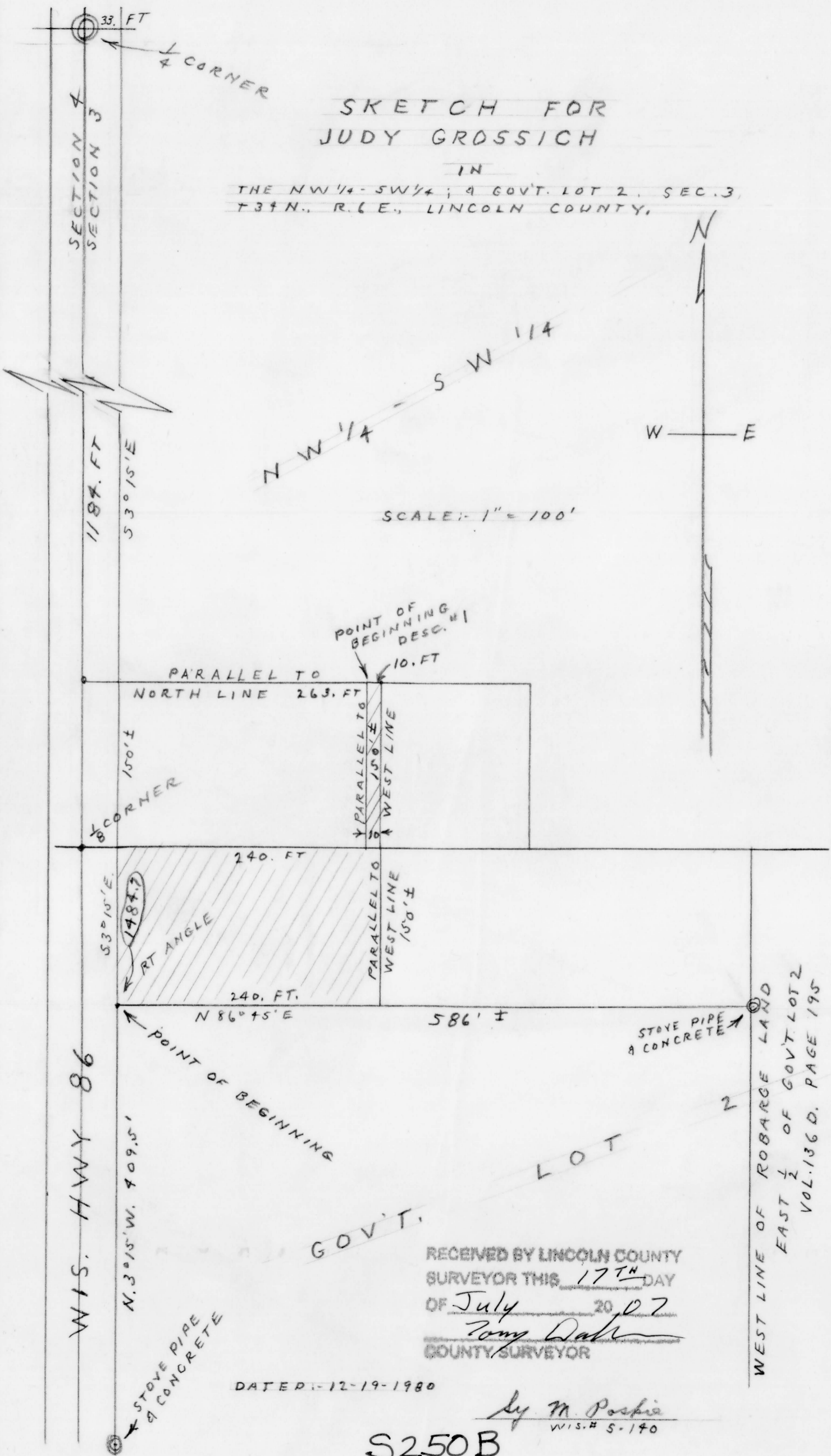


SKETCH FOR  
JUDY GROSSICH

IN  
THE NW 1/4 - SW 1/4; A GOVT. LOT 2, SEC. 3,  
T34N., R. 6E., LINCOLN COUNTY,



RECEIVED BY LINCOLN COUNTY  
SURVEYOR THIS 17<sup>TH</sup> DAY  
OF July 20, 07  
*Tony Dahn*  
COUNTY SURVEYOR

DATED: 12-19-1980

*Ly M. Postie*  
WIS. # 5-170

S250B