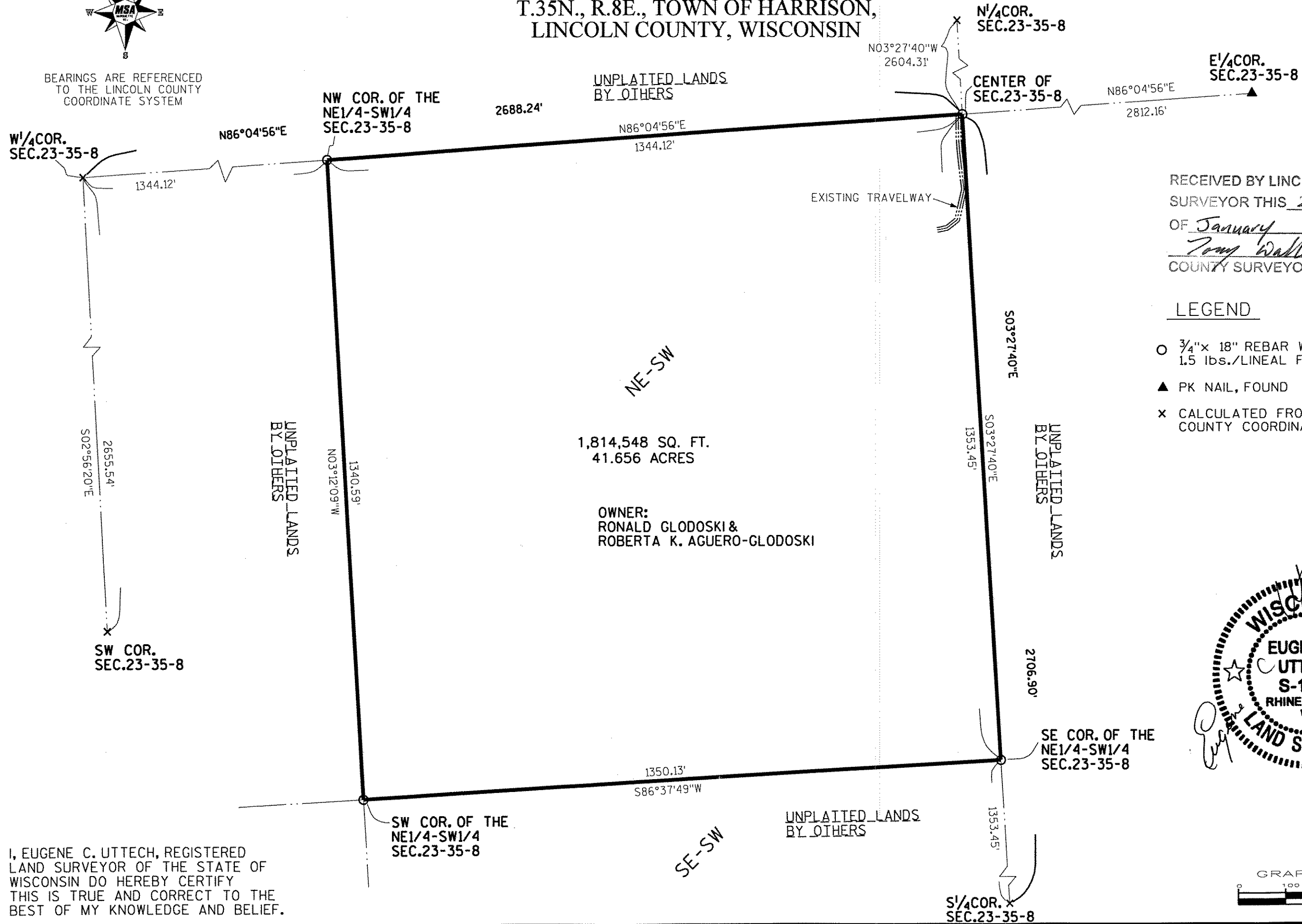


-PLAT OF SURVEY-

LANDS BEING THE NE.1/4 OF THE SW.1/4, SECTION 23,
T.35N., R.8E., TOWN OF HARRISON,
LINCOLN COUNTY, WISCONSIN

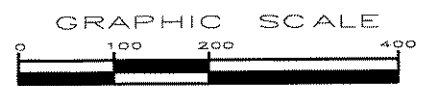
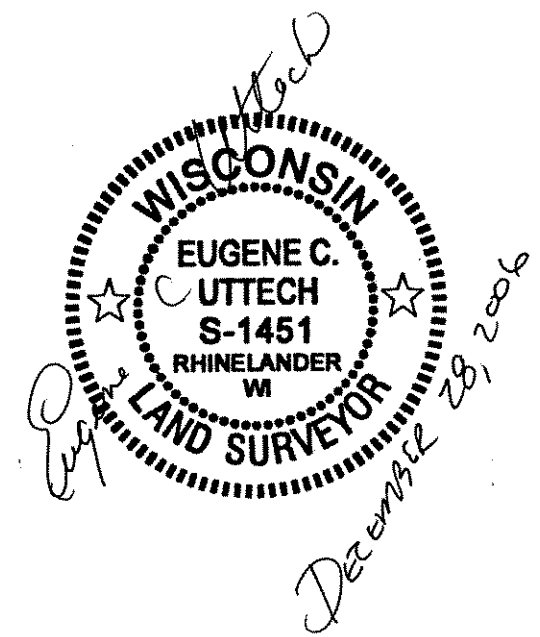


BEARINGS ARE REFERENCED
TO THE LINCOLN COUNTY
COORDINATE SYSTEM



RECEIVED BY LINCOLN COUNTY
SURVEYOR THIS 26TH DAY
OF January 20 07
Tom Walker
COUNTY SURVEYOR

- LEGEND**
- 3/4" x 18" REBAR WEIGHING 1.5 lbs./LINEAL FT., SET
 - ▲ PK NAIL, FOUND
 - × CALCULATED FROM COUNTY COORDINATES



S243A

I, EUGENE C. UTTECH, REGISTERED
LAND SURVEYOR OF THE STATE OF
WISCONSIN DO HEREBY CERTIFY
THIS IS TRUE AND CORRECT TO THE
BEST OF MY KNOWLEDGE AND BELIEF.

TRANSPORTATION • MUNICIPAL DEVELOPMENT • ENVIRONMENTAL	
1833 North Stevens Street, Milwaukee, WI 53201 715-382-2324 • 1-800-844-7854 Fax: 715-382-4116 © 2004 MSA PROFESSIONAL SERVICES	
MSA PROFESSIONAL SERVICES	
PROJECT NO. 0980750	DATE 05/07/06
DRAWN BY	CHECKED BY
PLOT DATE	PLOT TIME
FILE NO. 0980750	SHEET