

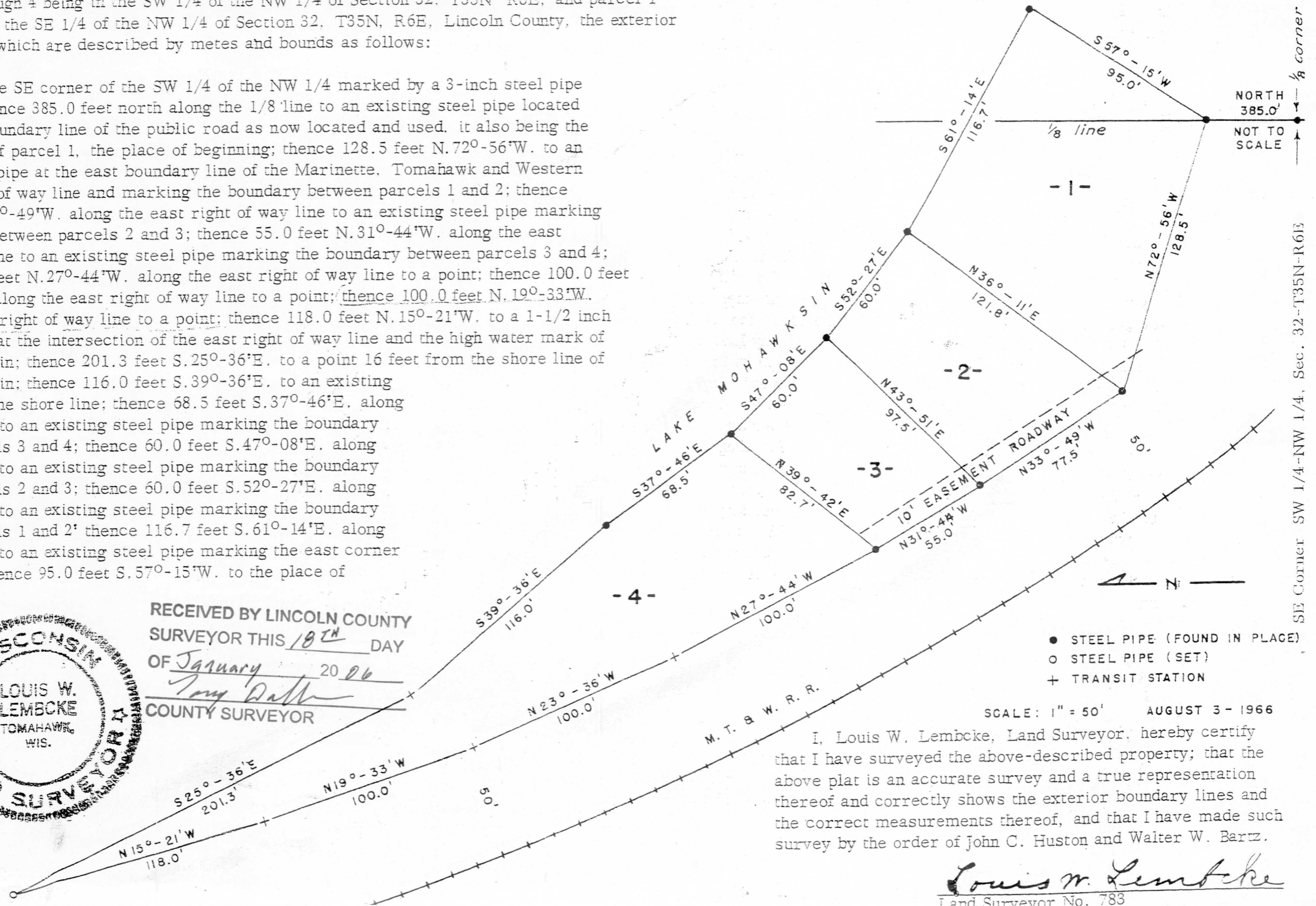
Parcels 1 through 4 being in the SW 1/4 of the NW 1/4 of Section 32, T35N R6E, and parcel 1 being partly in the SE 1/4 of the NW 1/4 of Section 32, T35N, R6E, Lincoln County, the exterior boundaries of which are described by metes and bounds as follows:

Beginning at the SE corner of the SW 1/4 of the NW 1/4 marked by a 3-inch steel pipe monument; thence 385.0 feet north along the 1/8 line to an existing steel pipe located at the north boundary line of the public road as now located and used. It also being the south corner of parcel 1, the place of beginning; thence 128.5 feet N. 72°-56'W. to an existing steel pipe at the east boundary line of the Marinette, Tomahawk and Western Railway right of way line and marking the boundary between parcels 1 and 2; thence 77.5 feet N. 33°-49'W. along the east right of way line to an existing steel pipe marking the boundary between parcels 2 and 3; thence 55.0 feet N. 31°-44'W. along the east right of way line to an existing steel pipe marking the boundary between parcels 3 and 4; thence 100.0 feet N. 27°-44'W. along the east right of way line to a point; thence 100.0 feet N. 23°-36'W. along the east right of way line to a point; thence 100.0 feet N. 19°-33'W. along the east right of way line to a point; thence 118.0 feet N. 15°-21'W. to a 1-1/2 inch steel pipe set at the intersection of the east right of way line and the high water mark of Lake Mohawksin; thence 201.3 feet S. 25°-36'E. to a point 16 feet from the shore line of Lake Mohawksin; thence 116.0 feet S. 39°-36'E. to an existing steel pipe on the shore line; thence 68.5 feet S. 37°-46'E. along the shore line to an existing steel pipe marking the boundary between parcels 3 and 4; thence 60.0 feet S. 47°-08'E. along the shore line to an existing steel pipe marking the boundary between parcels 2 and 3; thence 60.0 feet S. 52°-27'E. along the shore line to an existing steel pipe marking the boundary between parcels 1 and 2; thence 116.7 feet S. 61°-14'E. along the shore line to an existing steel pipe marking the east corner of parcel 1; thence 95.0 feet S. 57°-15'W. to the place of beginning.

S2227B



RECEIVED BY LINCOLN COUNTY SURVEYOR THIS 18TH DAY OF January 20 06
Tony Dalk
 COUNTY SURVEYOR



I, Louis W. Lembcke, Land Surveyor, hereby certify that I have surveyed the above-described property; that the above plat is an accurate survey and a true representation thereof and correctly shows the exterior boundary lines and the correct measurements thereof, and that I have made such survey by the order of John C. Huston and Walter W. Barz.

Louis W. Lembcke
 Land Surveyor No. 783

1/8 corner
 SE Corner SW 1/4-NW 1/4, Sec. 32-T35N-R6E