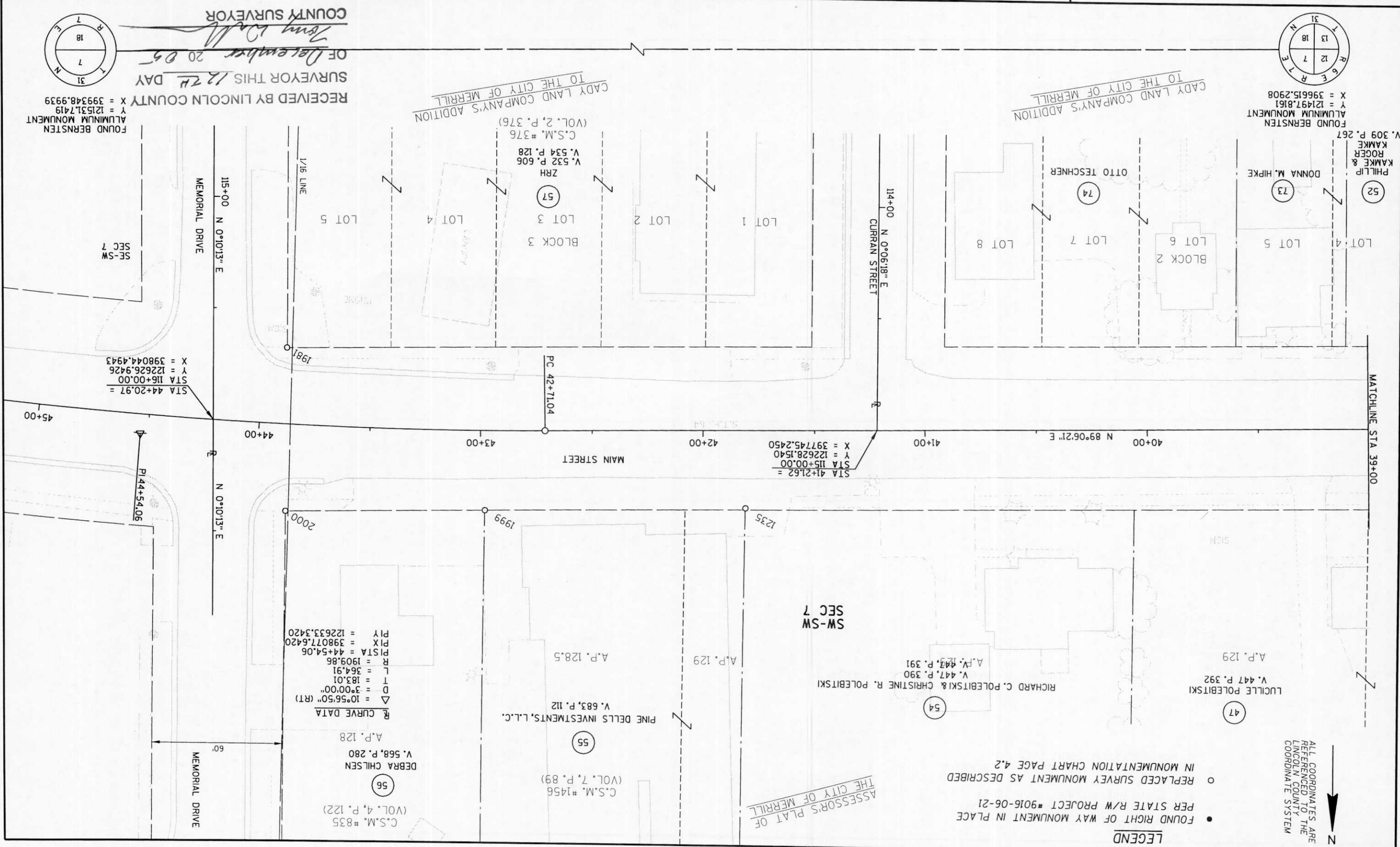


REVISION DATE	DATE 12-09-2005	SCALE, FEET	HWY: S.T.H. 64	COUNTY: LINCOLN	MONUMENTATION RESTORATION	PS&E SHEET NO: 4.11
						PS&E SHEET NO: 4.



LEGEND

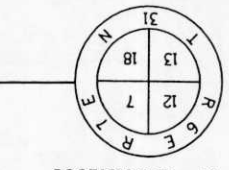
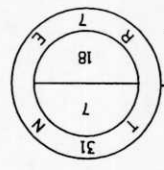
- FOUND RIGHT OF WAY MONUMENT IN PLACE PER STATE R/W PROJECT #9016-06-21
- REPLACED SURVEY MONUMENT AS DESCRIBED IN MONUMENTATION CHART PAGE 4.2

ALL COORDINATES ARE REFERENCED TO THE LINCOLN COUNTY COORDINATE SYSTEM



ASSESSOR'S PLAT OF THE CITY OF MERRILL

RECEIVED BY LINCOLN COUNTY SURVEYOR THIS 12TH DAY OF December 20 05
 JERRY D. WILSON
 COUNTY SURVEYOR



FOUND BERNSTEN ALUMINUM MONUMENT
 T = 121531.7419
 Y = 121531.7419
 X = 399348.9939

FOUND BERNSTEN ALUMINUM MONUMENT
 Y = 121497.8161
 X = 396615.2908

STA 44+20.97 =
 STA 116+00.00
 Y = 122626.9426
 X = 398044.4943

STA 41+21.62 =
 STA 115+00.00
 Y = 122628.1540
 X = 397745.2450

R CURVE DATA
 Δ = 10°56'50" (RT)
 D = 3°00'00"
 T = 183.01
 L = 364.91
 R = 1909.86
 P1 STA = 44+54.06
 P1 X = 398077.6420
 P1 Y = 122633.3420

S224K

LEVELS ON - 1, 2, 3, 4, 5, 6, 7, 8, 9, 10, 11, 12, 13, 14, 17, 18, 19, 20, 21, 22, 23, 24, 25, 26, 27, 28, 29, 30, 31, 32, 33, 34, 35, 36, 37, 38, 39, 40, 41, 42, 43, 44, 45, 46, 47, 48, 49, 50, 51, 52, 53, 54, 55, 56, 57, 58, 59, 60, 61, 62, 63