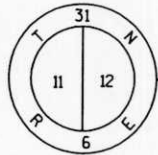
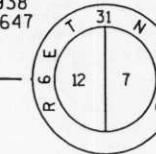


FOUND BERNSTEN
SURVEY NAIL
Y = 124214.3740
X = 391294.4324



FOUND BERNSTEN
SURVEY NAIL
Y = 124142.3938
X = 396612.2647



ALL COORDINATES ARE
REFERENCED TO THE
LINCOLN COUNTY
COORDINATE SYSTEM

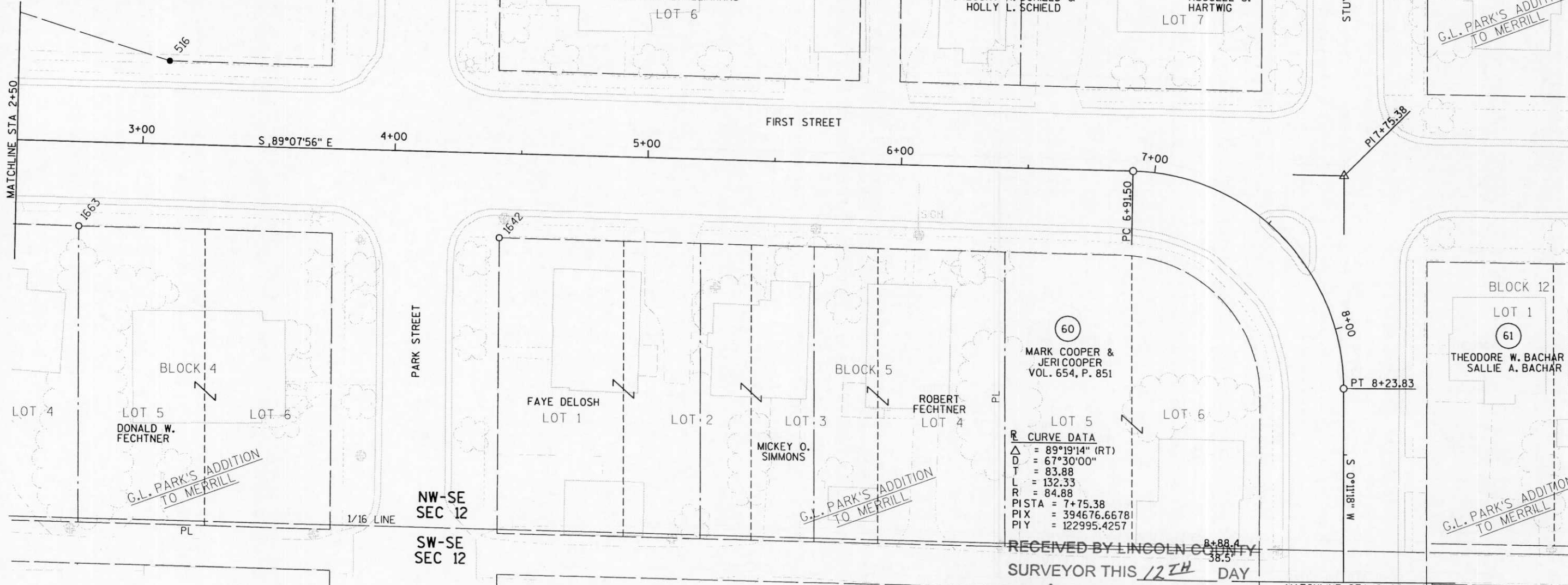
①
LINCOLN COUNTY
V. 628, P. 154
BLOCK 3

G.L. PARK'S ADDITION
TO MERRILL

LEGEND

- FOUND RIGHT OF WAY MONUMENT IN PLACE PER STATE R/W PROJECT #9016-06-21
- REPLACED SURVEY MONUMENT AS DESCRIBED IN MONUMENTATION CHART PAGE 4.2

LEVELS ON - 1, 2, 3, 4, 5, 6, 7, 8, 9, 10, 11, 12, 13, 14, 15, 16, 17, 18, 19, 20, 21, 22, 23, 24, 25, 26, 27, 28, 29, 30, 31, 32, 33, 34, 35, 36, 37, 38, 39, 40, 41, 42, 43, 44, 45, 46, 47, 48, 49, 50, 51, 52, 53, 54, 55, 56, 57, 58, 59, 60, 61, 62, 63



⑥0
MARK COOPER &
JERI COOPER
VOL. 654, P. 851

LOT 5

CURVE DATA
 Δ = 89°19'14" (RT)
D = 67°30'00"
T = 83.88
L = 132.33
R = 84.88
PISTA = 7+75.38
PIX = 394676.66781
PIY = 122995.42571

RECEIVED BY LINCOLN COUNTY
SURVEYOR THIS 12TH DAY
OF December 20 05
Tom Dalk
COUNTY SURVEYOR

S224E

REVISION DATE	DATE 12-09-2005	SCALE, FEET 0 20 40	HWY: S.T.H. 64	PS&E SHEET NO: 4.
	GRID FACTOR N/A		COUNTY: LINCOLN	PS&E SHEET NO: 4.5
			MONUMENTATION RESTORATION	E