

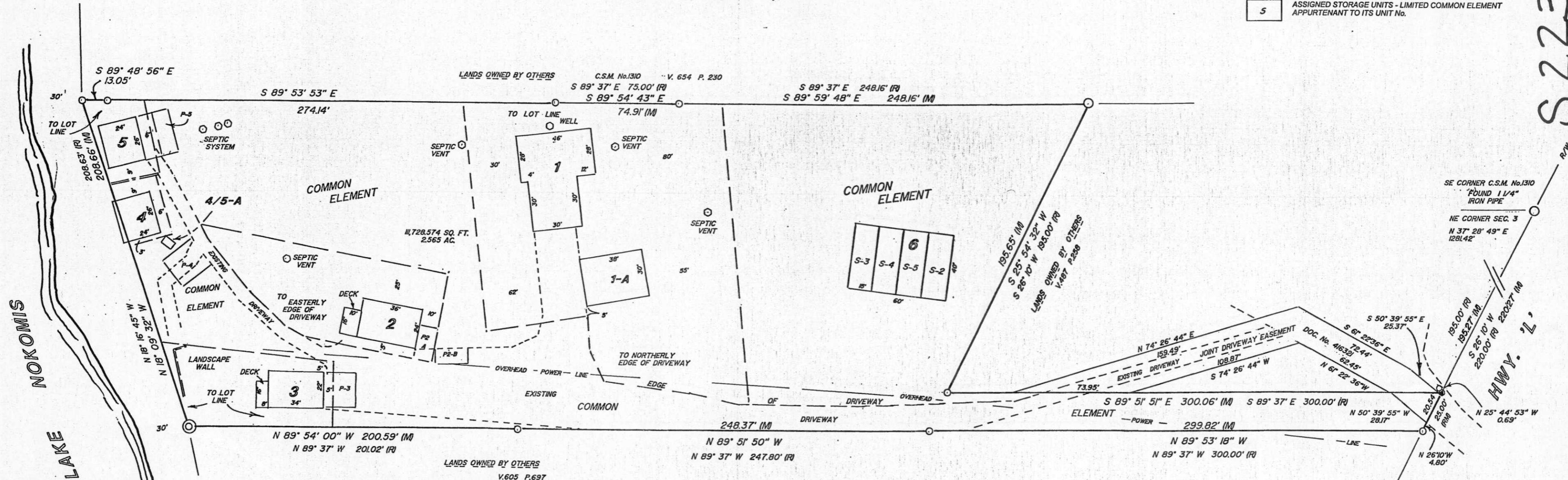
446643

*Glenn Callahan*  
 REGISTER OF DEEDS

# 1st. AMENDMENT OUTBACK RESORT CONDOMINIUM

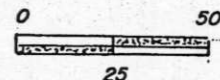
Being a part of the  
 NE 1/4 of the NE 1/4  
 and the  
 NW 1/4 of the NE 1/4  
 SECTION 3, T35N, R6E,  
 Town of Bradley, Lincoln County, Wisconsin

- FOUND PK NAIL
- FOUND 1" IRON PIPE
- ⊙ FOUND 1" IRON PIPE INSIDE OF A 1 1/2" IRON PIPE
- FOUND 1 1/2" IRON PIPE
- R / M DENOTES RECORD / MEASURED
- 0 EXISTING STRUCTURE AND UNIT No.
- LIMITED COMMON ELEMENT APPURTENANT TO ITS UNIT No.
- P ASSIGNED PARKING - LIMITED COMMON ELEMENT APPURTENANT TO ITS UNIT No.
- S ASSIGNED STORAGE UNITS - LIMITED COMMON ELEMENT APPURTENANT TO ITS UNIT No.



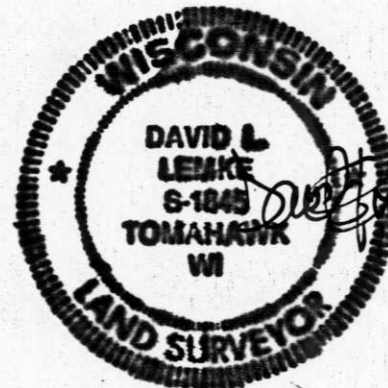
ALL LANDS WITHIN 30 FEET OF THE HIGHWATER MARK OF LAKE NOKOMIS ARE RETAINED BY WISCONSIN VALLEY IMPROVEMENT COMPANY.

NOTE: UNITS 4 & 5 ARE NON - CONFORMING STRUCTURES



SCALE: 1" = 50'

NORTH  
 BEARINGS BASED ON WEST  
 R/W CTY. HWY. 2, ASSUMED  
 S 26° 10' 00" W



UNIT	AREA
1	2188 SQ. FT.
2	864 SQ. FT.
3	748 SQ. FT.
4	624 SQ. FT.
5	624 SQ. FT.
1-A	1140 SQ. FT.
4/5-A	32 SQ. FT.
6	2400 SQ. FT.

ASSIGNED PARKING APPURTENANT TO ITS UNIT No.  
 LIMITED COMMON ELEMENT  
 P2A & P2B 10' x 20'  
 P3 22' x 20'  
 P4 20' x 20'  
 P5 26' x 20'

UNIT 4/5 - A LIMITED COMMON ELEMENT WATER PUMP SHED APPURTENANT TO ITS UNIT No.

UNIT 1 - A POLE BUILDING APPURTENANT TO ITS UNIT No.

UNIT 6 ASSIGNED STORAGE POLE BUILDING - LIMITED COMMON ELEMENT APPURTENANT TO ITS UNIT No.

I, DAVID L. LEMKE, REGISTERED LAND SURVEYOR, S-1845, HEREBY CERTIFY THAT THIS PLAT IS A CORRECT REPRESENTATION OF THE CONDOMINIUM DESCRIBED AND THAT THE IDENTIFICATION OF EACH UNIT AND COMMON ELEMENT CAN BE DETERMINED THEREFROM. THE LOCATION OF EACH UNIT, ITS APPROXIMATE DIMENSIONS AND UNIT AREA HAVE BEEN PROVIDED ON THIS SHEET. THIS CONDOMINIUM PLAT KNOWN AS THE OUTBACK RESORT COMDOMINIUM, CONSISTS OF ONE SHEET AND COMPLIES WITH SEC. 703 OF THE WISCONSIN STATUTES.

Boundary Hunter  
 P.O. BOX 442  
 TOMAHAWK, WI 54487  
 715/453-7035 \$50.00 PD  
 ck # 3981

S 223 B