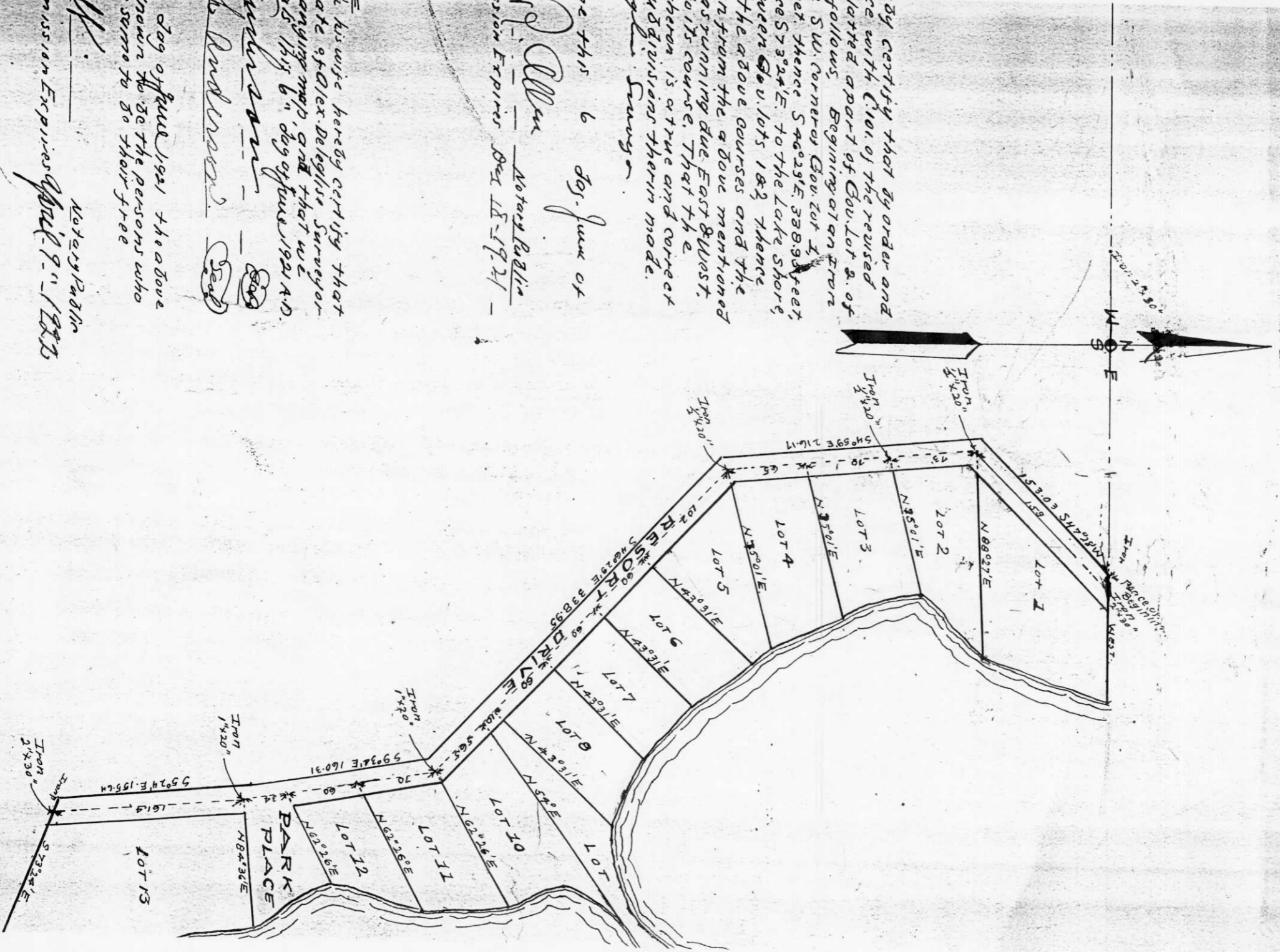


PLAT OF
SON'S LAKE FRONT LOTS
 LINCOLN COUNTY WIS.
 Scale 100ft = 1 inch
 11/11/1921



By certify that by order and
 ce with C101 of the revised
 lated apart of Gov. Lot 2. of
 follows. Beginning at an Iron
 : SW. corner of Gov. Lot 1,
 er, thence S 46° 23' E 338.93 feet,
 ce S 73° 24' E to the lake shore,
 were Gov. lots 1 & 2, thence
 the above courses and the
 instrument the above mentioned
 to its course. That the
 thereon is a true and correct
 divisions therein made.
 J. L. Searcy

me this & for-just of
 J. L. Searcy Notary Public
 sion Expires Dec 18-1921

The likewise hereby certify that
 cate of Alex. Deleghis, Surveyor
 ranging map, and that we
 eas 1813 & 1814 of June 1921 A.D.

W. J. Anderson
 " Day of June 1921 the above
 knowin to be the persons who
 he seems to be their free

W. J. Anderson Notary Public
 mission Expires April 9th 1922

S 218 A