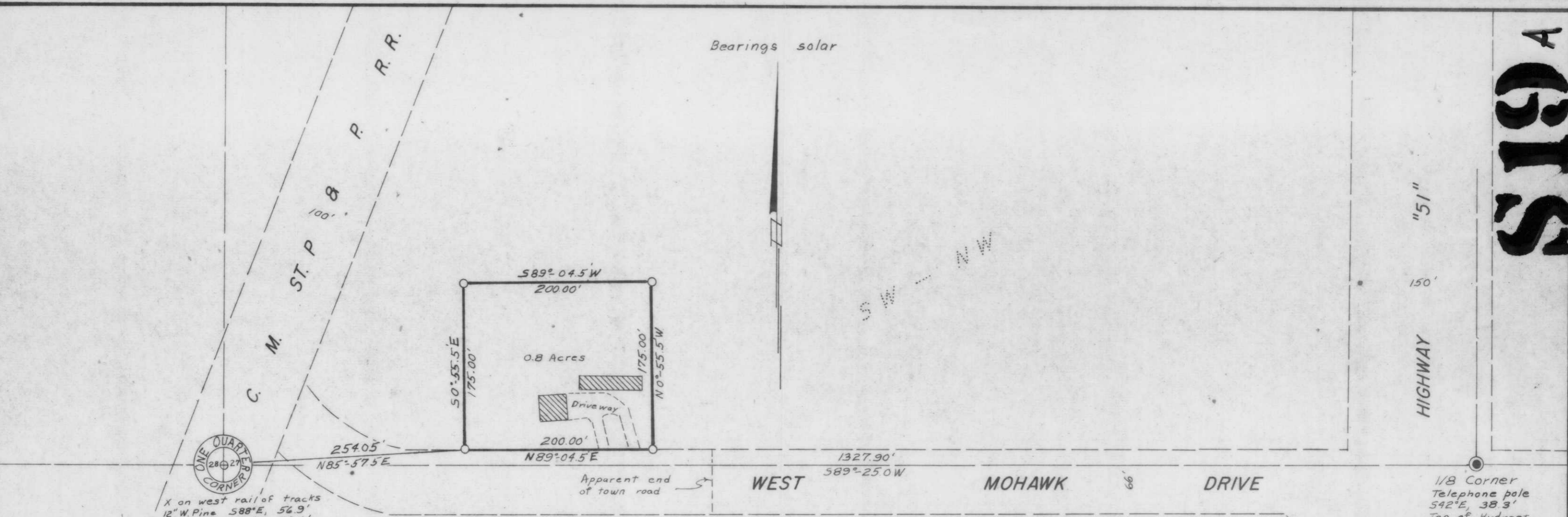


519A

Bearings solar



X on west rail of tracks
 12" W. Pine 588°E, 56.9'
 18" W. Pine 556°W, 78.6'
 6" Tamarack 523°E, 97.0'
 Erroneous 1 1/2" iron pipe
 Northeast, 0.60'

1/8 Corner
 Telephone pole
 542°E, 38.3'
 Top of Hydrant
 Southwest, 83.2'
 PK nail in Box Elder
 Northeast, 102.5'
 Back corner of Curb
 Southeast, 36.5'

Part of the
SW 1/4 of the NW 1/4
SECTION 27, T35N, R6E

Bradley Township
 Lincoln County, Wisconsin

● = Railroad spike set.
 ○ = Iron pipe set.

RECEIVED AT LINCOLN COUNTY
 COURTHOUSE THIS 27 DAY
 OF May 19 75
Patricia R. Pinski
 TAX DESCRIPTION OFFICE

Scale 1"=100'

September, 1974



Northwoods
 Surveyors
 Inc.

John H. Fisher
 Land Surveyor

90'
 Drafted by D. McMullen