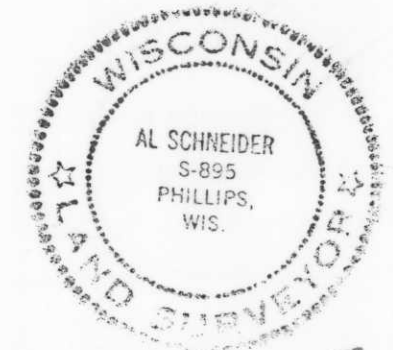


5183A

RECEIVED AT LINCOLN COUNTY
COURTHOUSE THIS 14TH DAY
OF May 20 01
Tony Dalton
LAND INFORMATION OFFICE



Al Schneider
10 May 2001

LEGEND

- = 3/4" X 30" SOLID ROUND IRON BAR SET WITH IRON FENCE POST ALONGSIDE.
- △ = PK NAIL SET ON WEST SIDE OF BRIDGE DECK
- ☆ = U.S. SURVEY CORNER, SEE CORNER MONUMENT RECORD IN CO. SURV. OFFICE.

SHEET 1 OF 2

SURVEY MAP

FOR JEROME BRECHT

THE SW1/4-NE1/4,
SECTION 10, T35N-R4E

TOWN OF SOMO, LINCOLN CO., WI

FRANK HENRY SURVEY CO.

W8425 NORTH ROAD

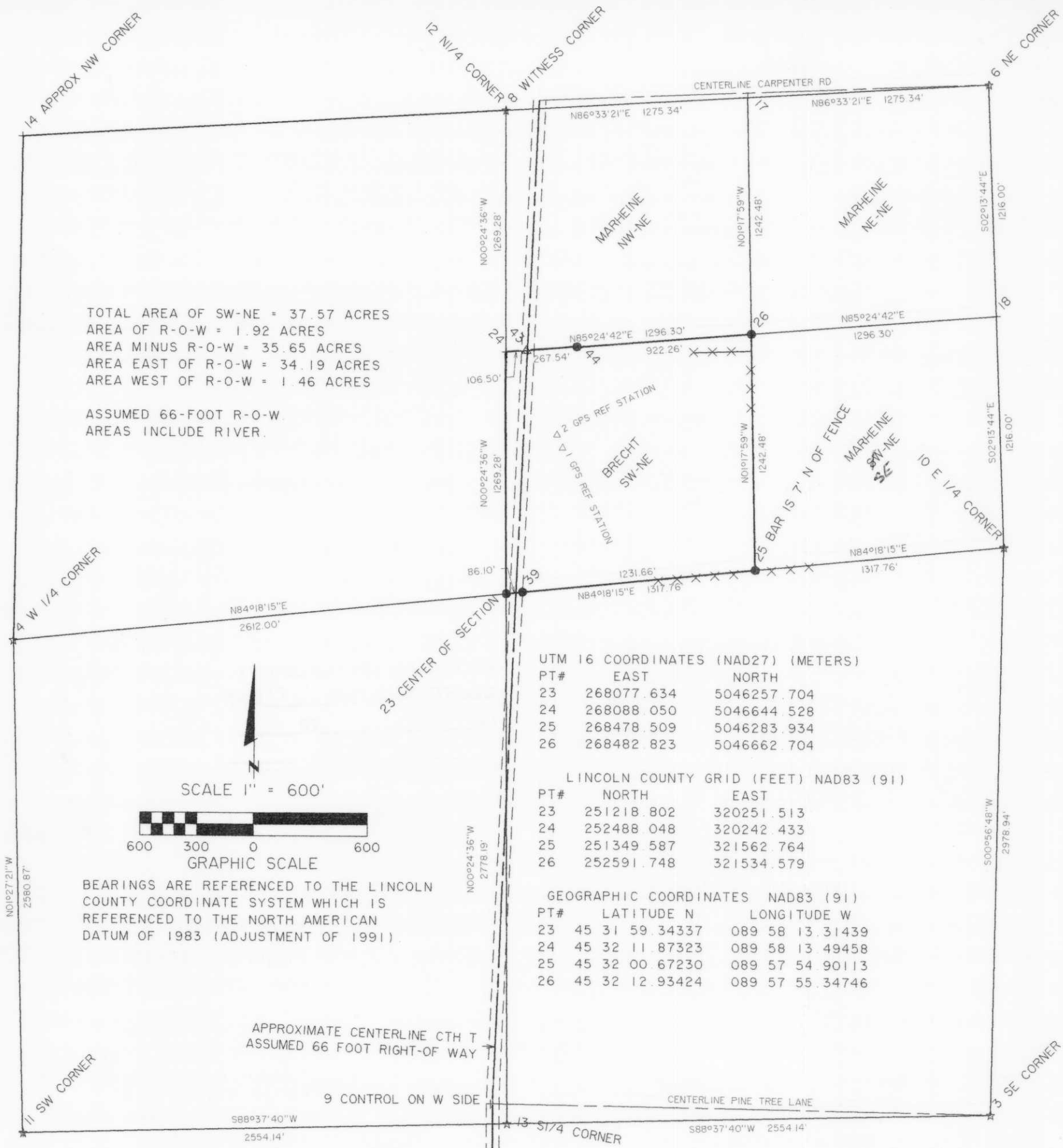
PHILLIPS, WI 54555-6656

715-339-6776

SCALE: 1" = 600' F.B. NO. 21

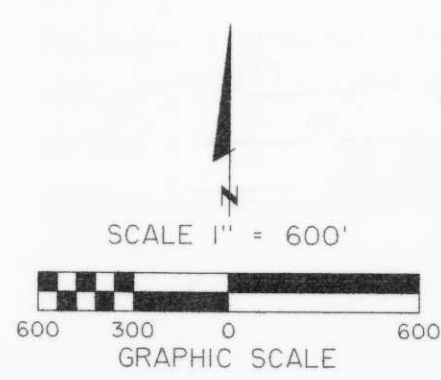
DRAWN BY: JAS PROJ NO. 845

DATE: 09MAY01 FILE TM\845\M2.HP



TOTAL AREA OF SW-NE = 37.57 ACRES
AREA OF R-O-W = 1.92 ACRES
AREA MINUS R-O-W = 35.65 ACRES
AREA EAST OF R-O-W = 34.19 ACRES
AREA WEST OF R-O-W = 1.46 ACRES

ASSUMED 66-FOOT R-O-W
AREAS INCLUDE RIVER.



BEARINGS ARE REFERENCED TO THE LINCOLN COUNTY COORDINATE SYSTEM WHICH IS REFERENCED TO THE NORTH AMERICAN DATUM OF 1983 (ADJUSTMENT OF 1991).

UTM 16 COORDINATES (NAD27) (METERS)

PT#	EAST	NORTH
23	268077.634	5046257.704
24	268088.050	5046644.528
25	268478.509	5046283.934
26	268482.823	5046662.704

LINCOLN COUNTY GRID (FEET) NAD83 (91)

PT#	NORTH	EAST
23	251218.802	320251.513
24	252488.048	320242.433
25	251349.587	321562.764
26	252591.748	321534.579

GEOGRAPHIC COORDINATES NAD83 (91)

PT#	LATITUDE N	LONGITUDE W
23	45 31 59.34337	089 58 13.31439
24	45 32 11.87323	089 58 13.49458
25	45 32 00.67230	089 57 54.90113
26	45 32 12.93424	089 57 55.34746

APPROXIMATE CENTERLINE CTH T
ASSUMED 66 FOOT RIGHT-OF WAY

9 CONTROL ON W SIDE

CENTERLINE PINE TREE LANE