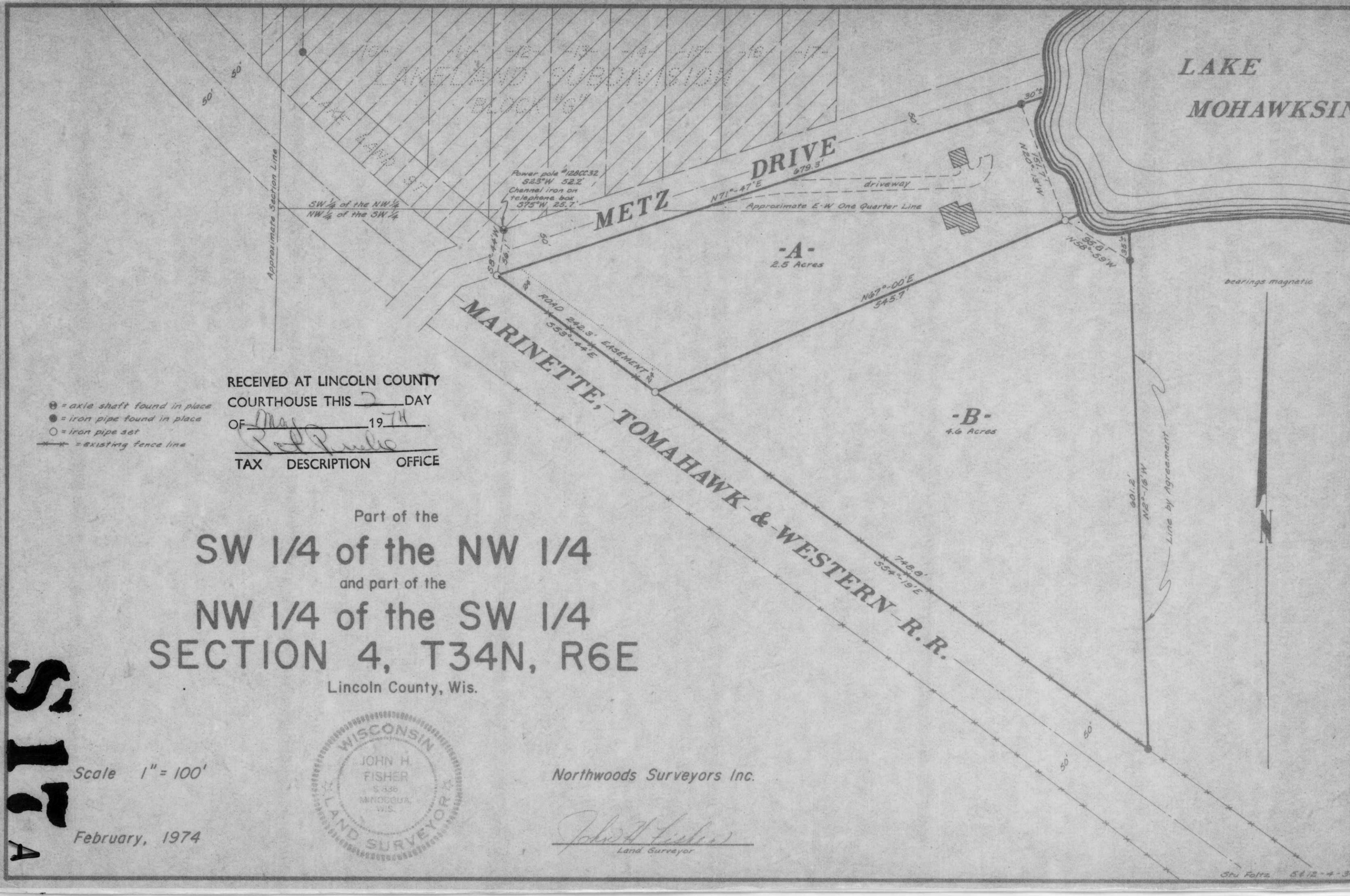


LAKE MOHAWKSIN



LAKELAND SUBDIVISION  
BLOCK 'G'

Power pole #128CC32  
523°W 52.2'  
Channel iron on  
telephone box  
375°W 25.7'

METZ DRIVE  
N71°-47'E 679.3'

-A-  
2.5 Acres

-B-  
4.6 Acres

MARINETTE, TOMAHAWK & WESTERN R.R.  
ROAD 242.5' EASEMENT  
559°-44'E  
N67°-00'E 545.7'  
748.9'  
557°-19'E

RECEIVED AT LINCOLN COUNTY  
COURTHOUSE THIS 2 DAY  
OF May 1974  
TAX DESCRIPTION OFFICE

Part of the  
SW 1/4 of the NW 1/4  
and part of the  
NW 1/4 of the SW 1/4  
SECTION 4, T34N, R6E  
Lincoln County, Wis.

STRA

Scale 1" = 100'

February, 1974



Northwoods Surveyors Inc.

John H. Fisher  
Land Surveyor