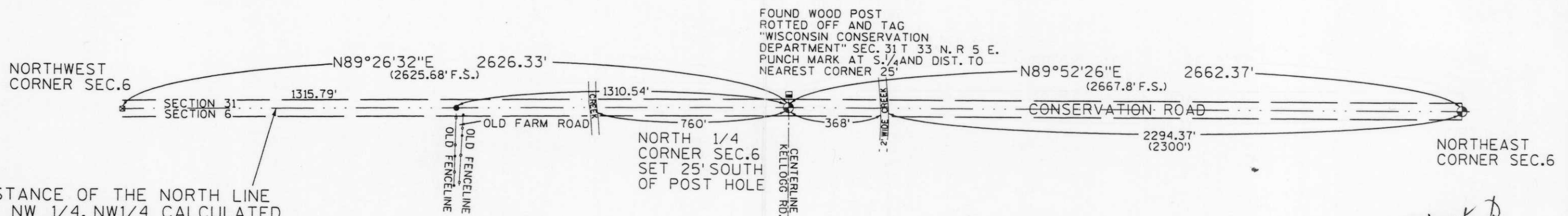


RECEIVED AT LINCOLN COUNTY COURTHOUSE THIS 8TH DAY OF January 20 02

SURVEY OF THE
NE CORNER OF THE FRACTIONAL
NW 1/4 OF THE NW 1/4 SECTION 6,
TOWNSHIP 32 NORTH, RANGE 5 EAST,
TOWN OF HARDING, LINCOLN COUNTY WIS.

S171A



DISTANCE OF THE NORTH LINE OF NW 1/4, NW 1/4 CALCULATED BY SINGLE PROPORTION FROM ORIGINAL GOVERNMENT SURVEY

WILLIAM ZORTMAN



BEARINGS REFERENCED TO THE NORTH LINE OF THE NW 1/4 OF SECTION 6, ASSUMED TO BEAR N 89°26'32\" E

RECEIVED AT LINCOLN COUNTY COURTHOUSE THIS 8TH DAY OF January 20 02
Tony Walker
LAND INFORMATION OFFICE

- ◆ SET, 4" DIA. ALUM. LINCOLN CO. BERNTSEN MO. STAMPED TO IDENTIFY CORNER
- FOUND, ROTTED OFF WOOD POST WITH 4"X4" TAG STAMPED TO IDENTIFY CORNER
- ▣ FOUND, 6"X6" RED GRANITE STONE WITH CUT "X" IN TOP
- SET, 1 1/4" DIA. X 36" LONG IRON ROD WEIGHING +3.65 lbs/ft.
- () RECORDED AS FROM FOCHS SURVEY (F.S.) 1937

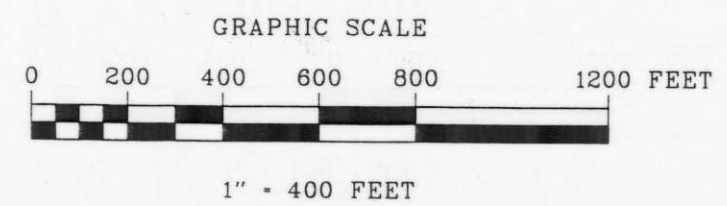


FIGURE 1
SURVEY FOR
WILLIAM ZORTMAN

MSA PROFESSIONAL SURVEYING
TRANSPORTATION - MUNICIPAL DEVELOPMENT - ENVIRONMENTAL
1835 N. Sherman St., Rhinelander, WI 54881
715-362-1344 1-800-844-7254 Fax: 715-362-4174
© MSA PROFESSIONAL SERVICES

DRAWN BY JLD DATE 12-04-01 SHEET 1 of 1
CHECKED BY ECU SCALE 1-400 FILE NO. 980258