

County Trunk "A"

Section 19
Section 30
E. L. Corner

Description of Parcel #1

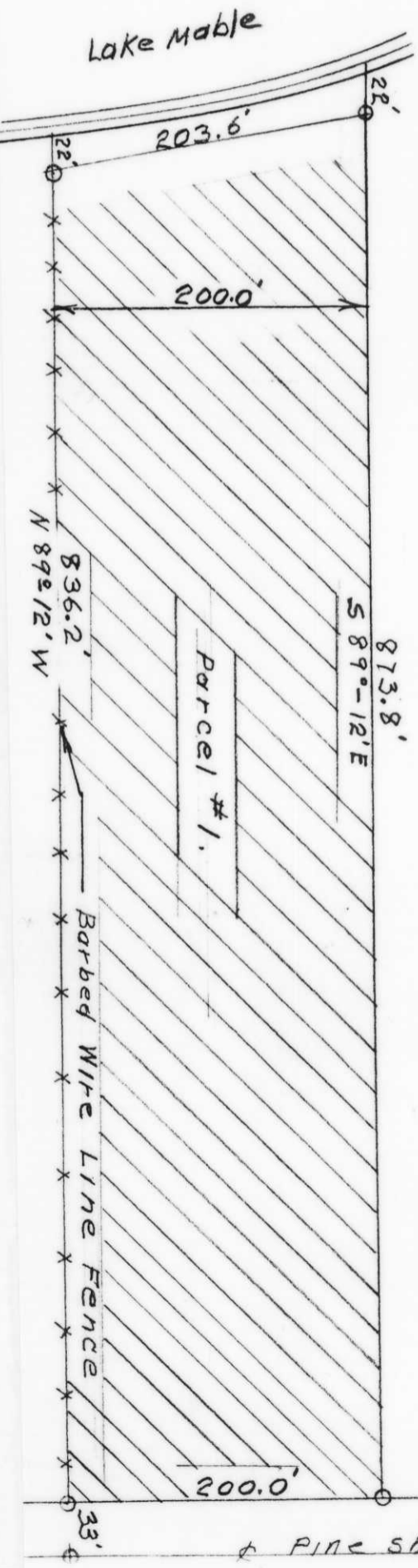
NW 1/4 of the NE 1/4, S30 - T35N - R7E

That part of the NW 1/4 of the NE 1/4, Section 30, T35N, R7E, described by metes and bounds as follows:

Commencing at the east 1/16 corner on the section line between Sections 19 and 30 marked by a railroad spike on the intersection of the centerlines of County Trunk A and town road Pine Shore Lane; thence 751.5 feet, S 00° - 00' along the centerline of Pine Shore Lane road to a point, thence 33.0 feet, N 89° - 12' W to a 1-1/2 inch steel pipe on an old fence line marking the south line of this parcel and the west line of Pine Shore Lane road, the place of beginning; thence continuing along this old line fence 836.2 feet, N 89° - 12' W to a 3/4 inch steel pipe marking the south meander corner on the shore of Lake Mable; thence 203.6 feet N 11° - 18' W to a 3/4 inch steel pipe marking the north meander corner; thence 873.8 feet, S 89° - 12' E to a 3/4 inch steel pipe marking the west line of Pine Shore Lane road; thence 200.0 feet, S 00° - 00' to the place of beginning, including the land lying between the meander corners and the water's edge.



Surveyed 4-21-66
L. W. Lenecke



RECEIVED AT LINCOLN COUNTY
COURTHOUSE THIS 25th DAY
OF Feb. 2000
Pat Priber
LAND INFORMATION OFFICE

Section A
S100

518.5'
S 00°-00'

Pine Shore Lane Rd.