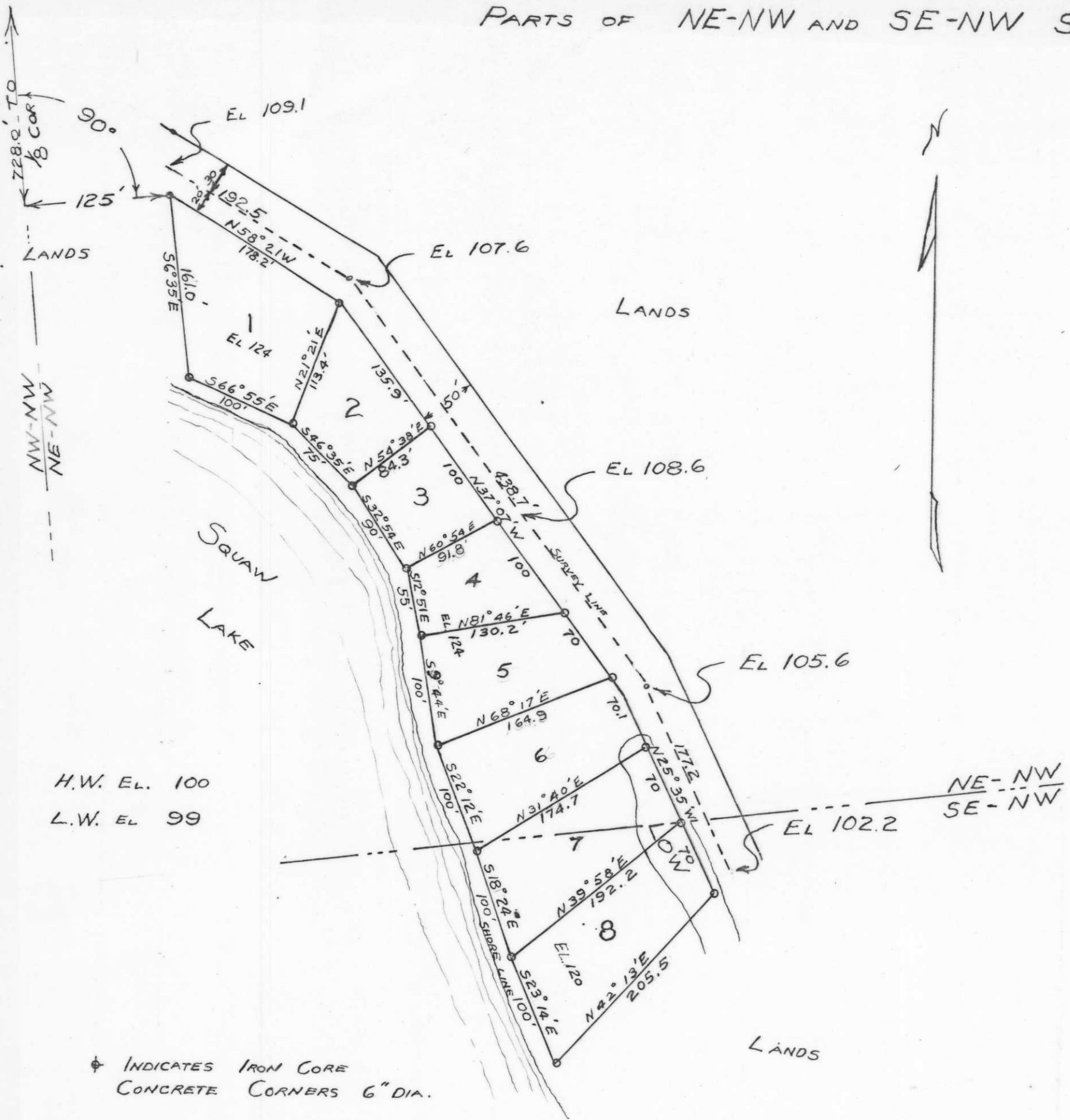


SCHOONE & HANRATTY'S SUBDIVISION OF SQUAW LAKE

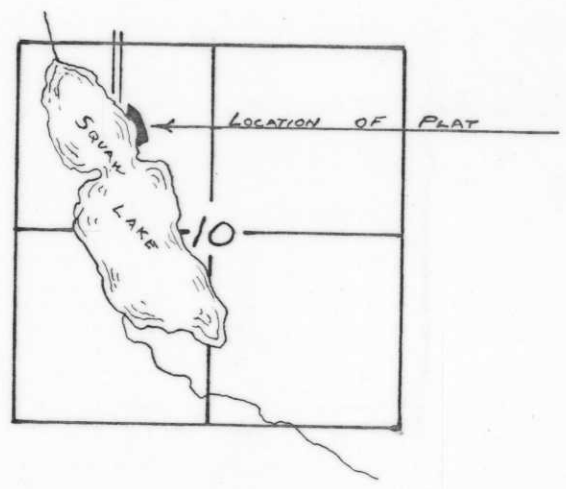
PARTS OF NE-NW AND SE-NW S10 - T35N R8E LINCOLN COUNTY



H.W. EL. 100
L.W. EL. 99

⊕ INDICATES IRON CORE
CONCRETE CORNERS 6" DIA.

NOTE :- BUILDING SETBACK LINE ALONG
ROAD 10' ALONG LOT LINE 5'



RECEIVED AT LINCOLN COUNTY
COURTHOUSE THIS 3rd DAY
OF Feb 2000
Ant. Prube
LAND INFORMATION OFFICE

SURVEY BY FX. FOX LINCOLN CO. SURVEYOR
NOV 1941
SCALE 1" = 100'

S156A