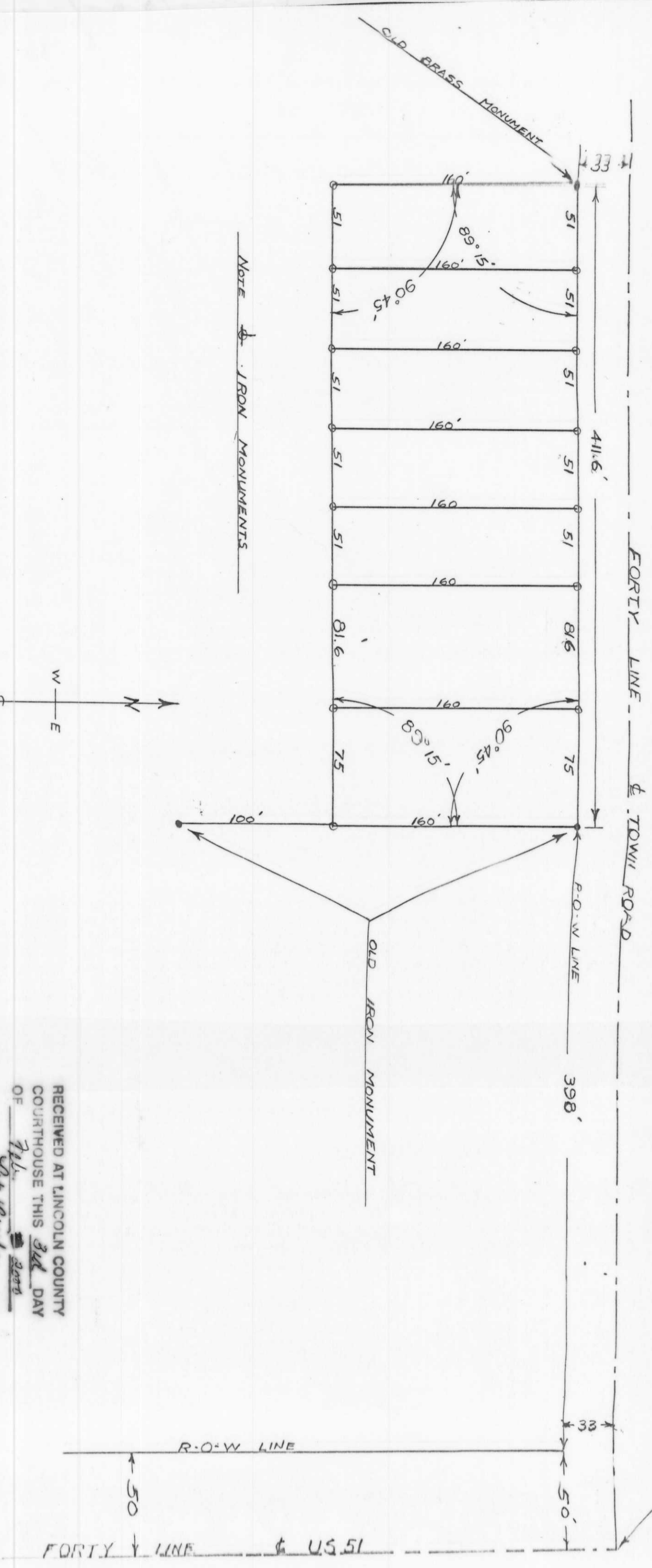
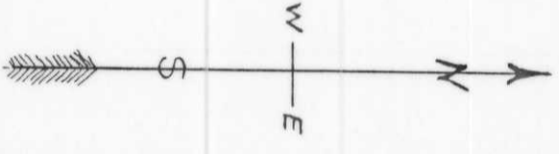


S153A



NOTE: IRON MONUMENTS



RECEIVED AT LINCOLN COUNTY
 COURTHOUSE THIS 3rd DAY
 OF 7th 2008
 Pat Spiller
 LAND INFORMATION OFFICE

PLAT OF PART OF
 THE SW SE SEC 1, T.31N. R.6E
 SURVEYED JUNE 3 1951 BY
 FRANCIS X. FOX
 SCALE 1" = 60'