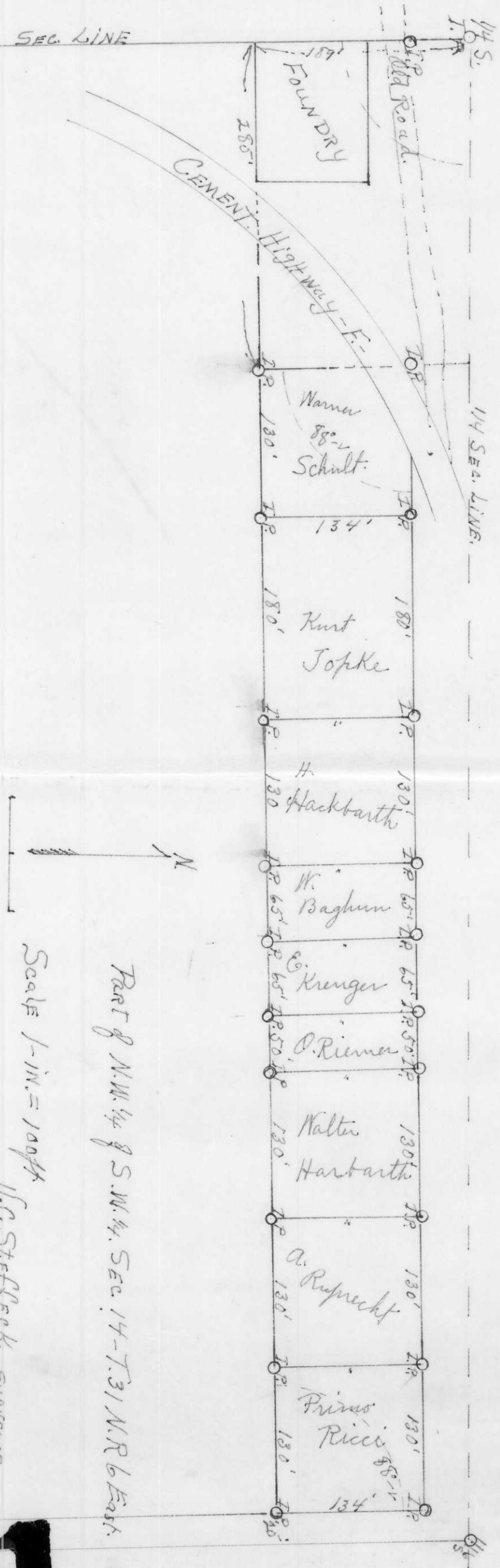


RECEIVED AT LINCOLN COUNTY  
 COURTHOUSE THIS 4th DAY  
 OF Oct 1999  
*Pat Files*  
 LAND INFORMATION OFFICE

SEC. LINE



Part of N.W. 1/4 of S.W. 1/4, Sec. 14-T.31 N.R. 6 East.

Scale 1-in. = 100ft

U.C. STEFFECK SURVEYOR  
 Merrill Wis.

**S151A**