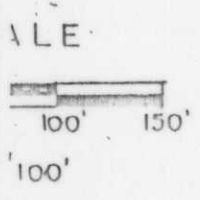
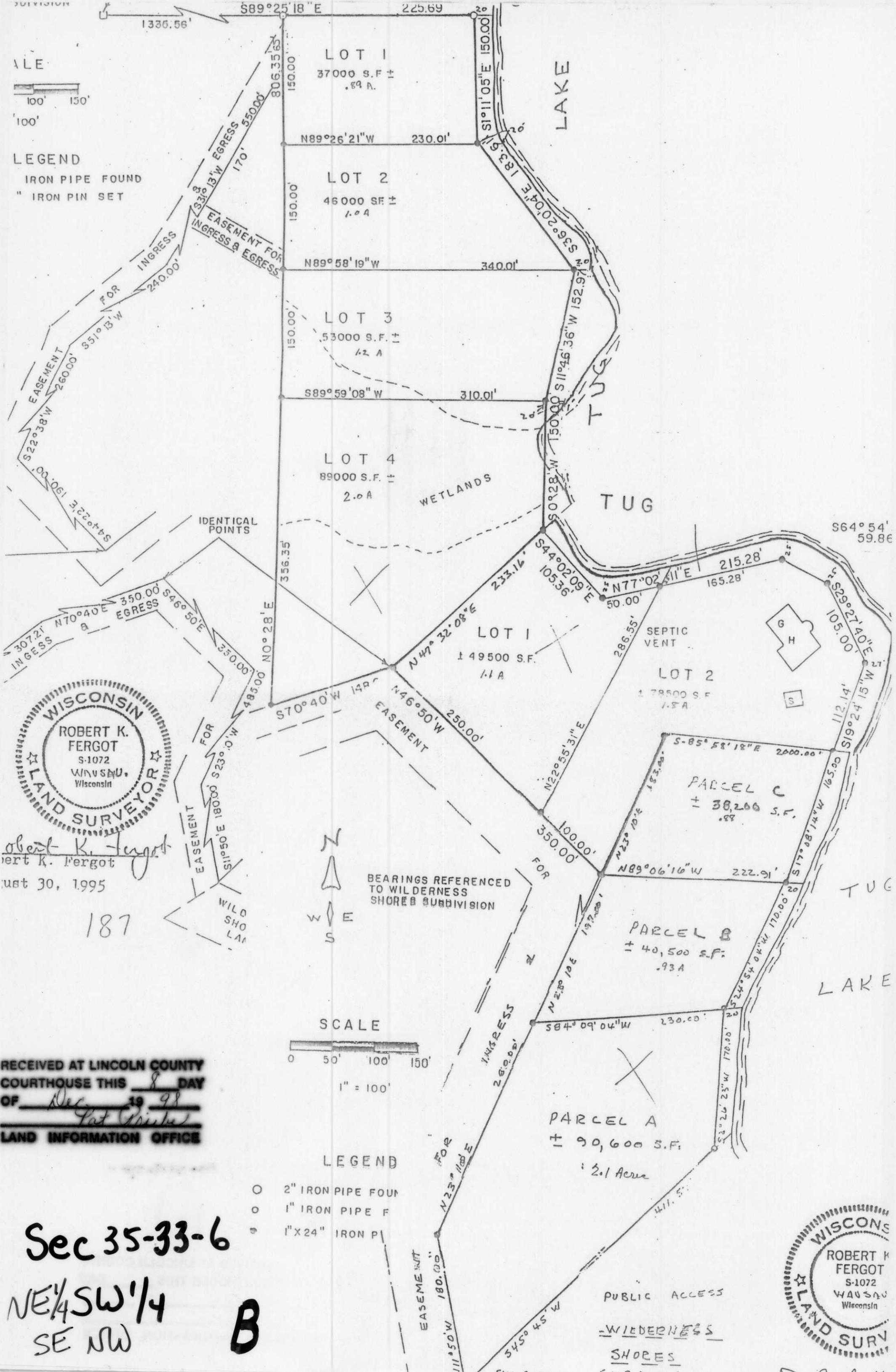


589°25'18"E 225.69
1336.56'



LEGEND
IRON PIPE FOUND
" IRON PIN SET



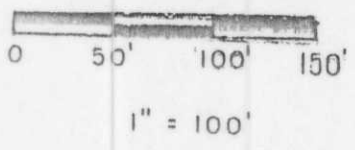
Robert K. Fergot
August 30, 1995

187



BEARINGS REFERENCED TO WILDERNESS SHORES SUBDIVISION

SCALE



LEGEND

- 2" IRON PIPE FOUND
- 1" IRON PIPE FOUND
- 1" X 24" IRON PIPE

RECEIVED AT LINCOLN COUNTY COURTHOUSE THIS 8 DAY OF Dec 19 98
Pat Wiske
LAND INFORMATION OFFICE

Sec 35-33-6
NE 1/4 SW 1/4
SE NW B



PUBLIC ACCESS
WILDERNESS
SHORES