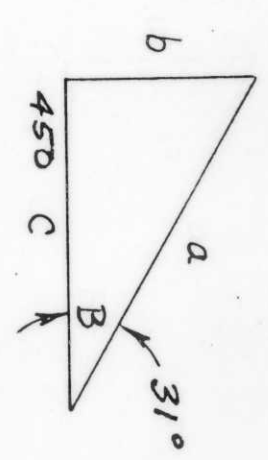


1.29-2
1.23-3

Sec 20-33-6
NW SW
SW SW

RECEIVED AT LINCOLN COUNTY
COURTHOUSE THIS 19 DAY
OF August 1998
TAX DESCRIPTION OFFICE

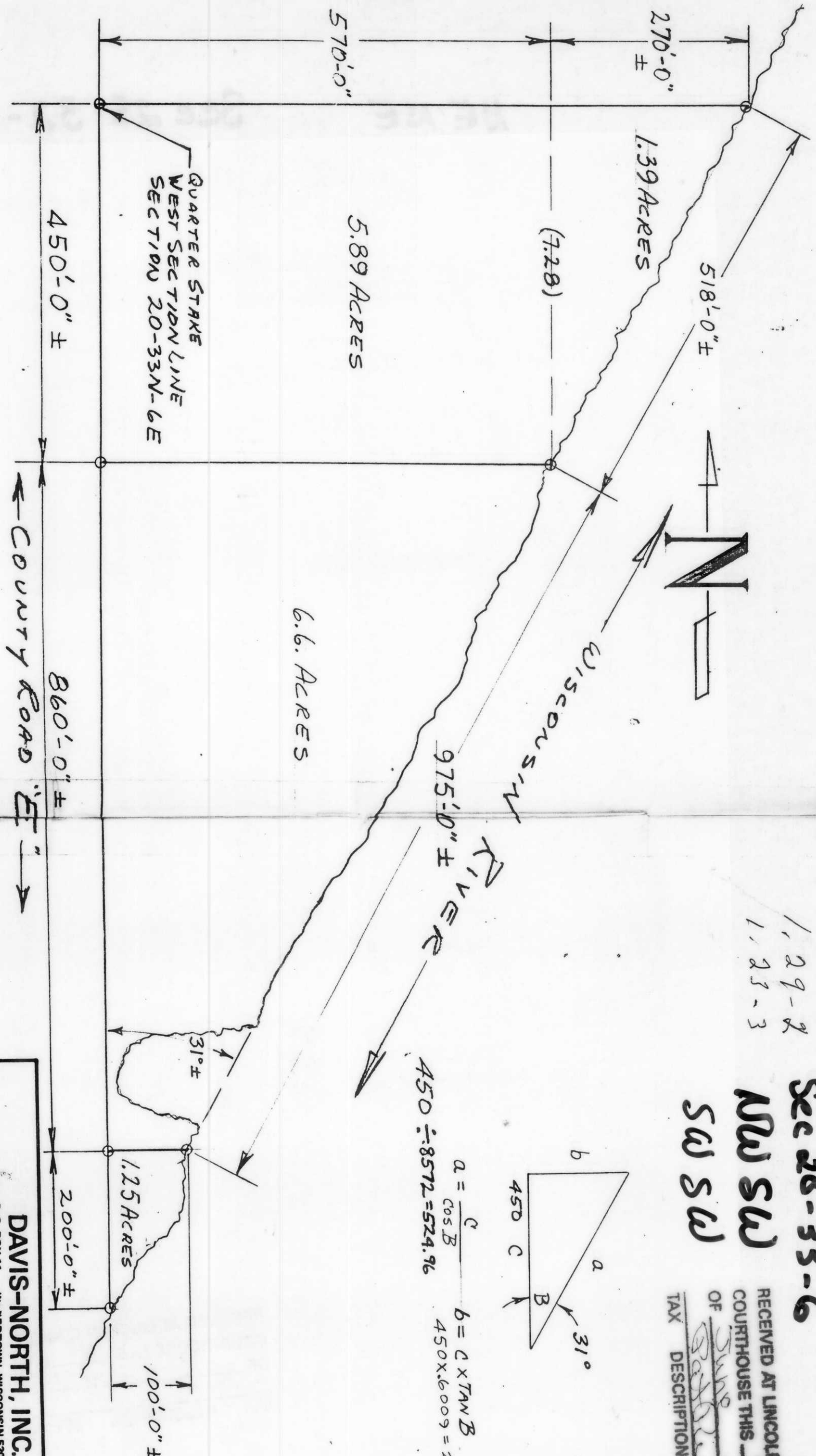


$$a = \frac{C}{\cos B}$$

$$450 \div .8572 = 524.96$$

$$b = C \times \tan B$$

$$450 \times .6009 = 270.4$$



DAVIS-NORTH, INC.
P.O. BOX 11 WATERTOWN, WISCONSIN 53094

SCALE: 1/4" = 50'
DATE: 7-3-93

APPROVED BY: Alice

DRAWN BY: CD

REVISOR

DRAWING NUMBER