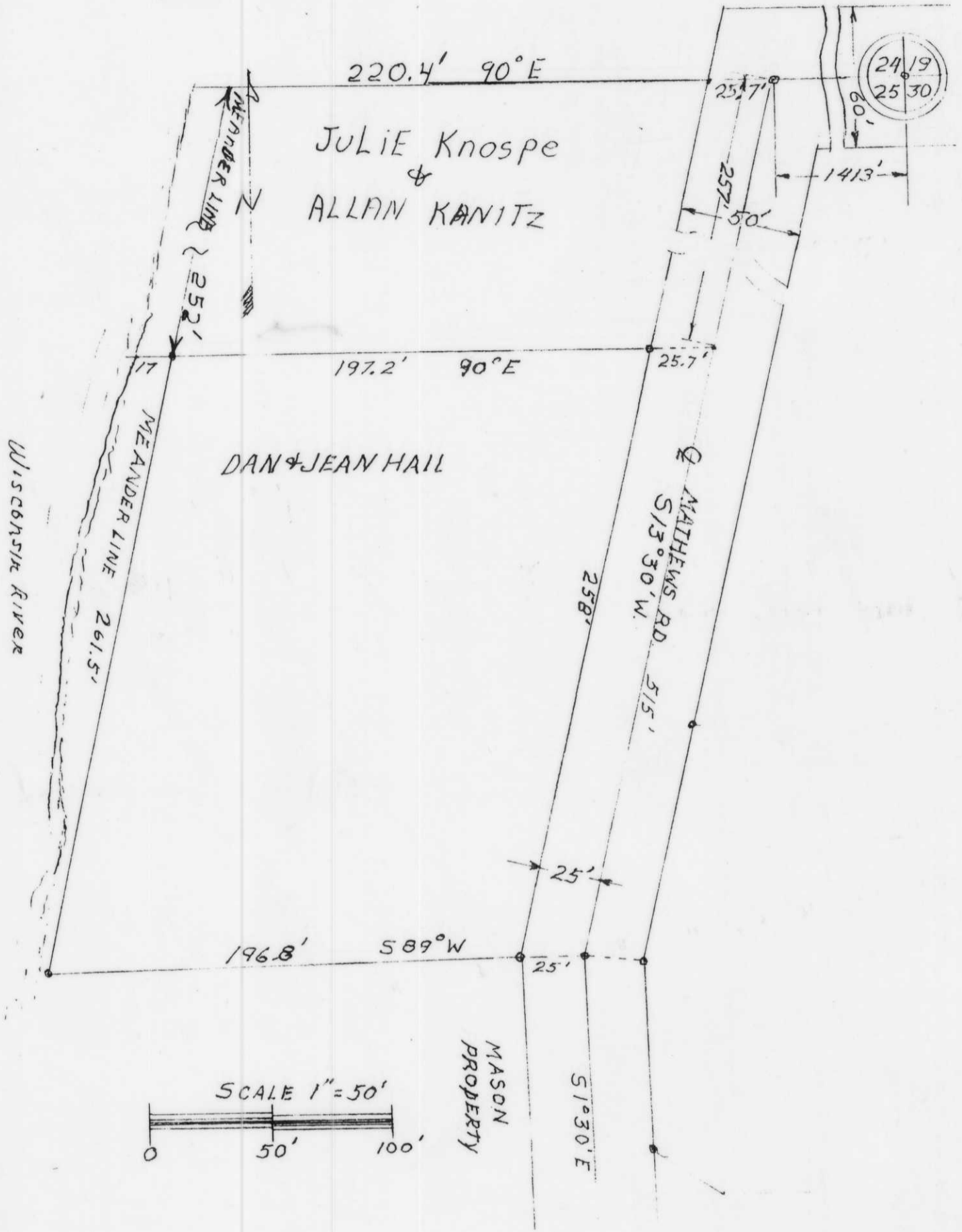


NE NE

Sec 25-32-5

VOL. 618 PG. 158

R. GIBSON PROP.



RECEIVED AT LINCOLN COUNTY  
COURTHOUSE THIS 7 DAY  
OF 17 19 98  
Pat Ruel  
TAX DESCRIPTION OFFICE

S149A

RECEIVED AT LINCOLN COUNTY