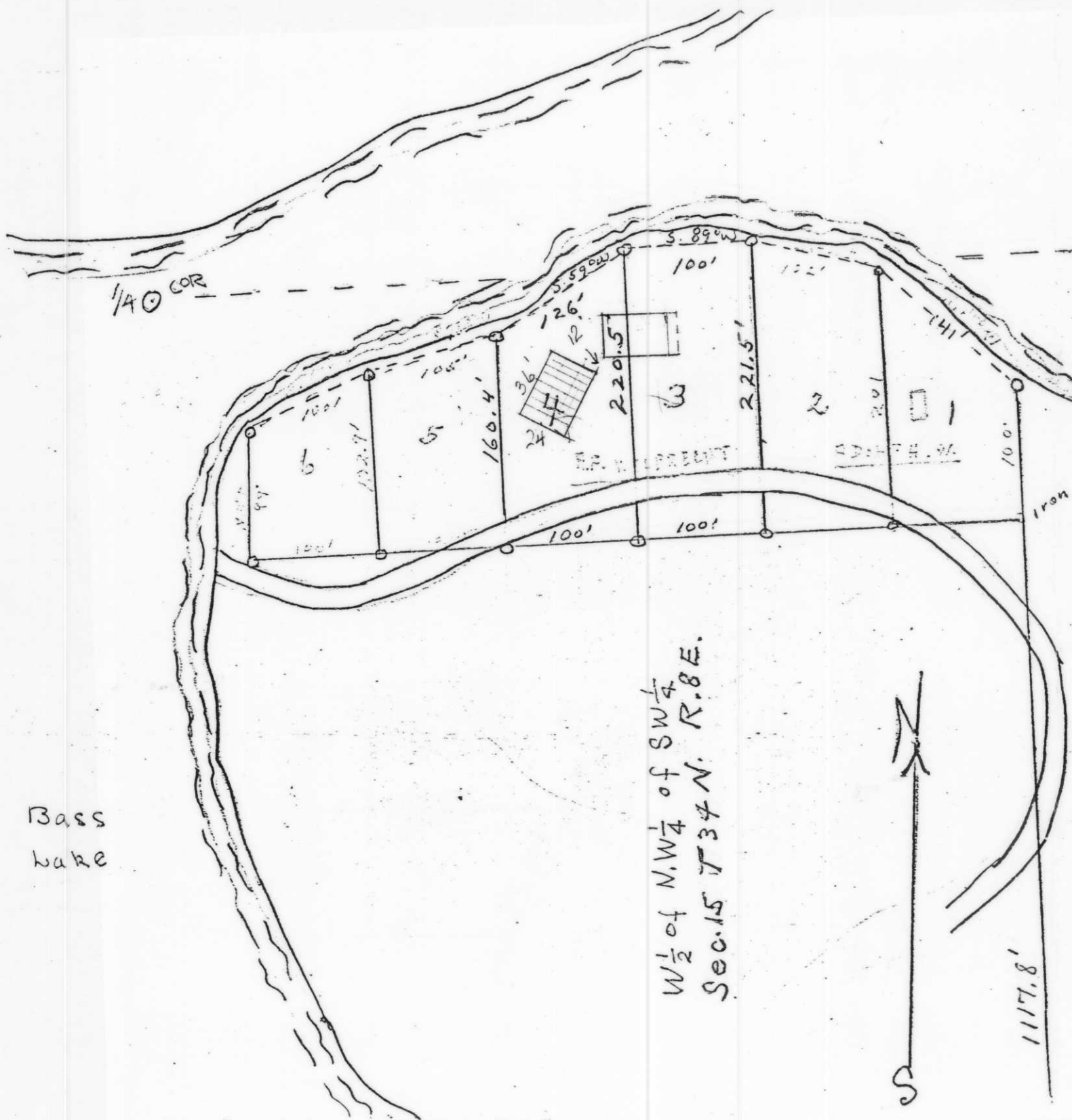


Bass lake



W 1/2 of N. W 1/4 of SW 1/4
Sec. 15 T 34 N. R. 8 E.



Scale 1 inch = 100 ft
1 1/2" x 30" Iron Pipe

H. W. KORDICK - SURVEYOR
(Lincoln Co.)

Long lake

RECEIVED AT LINCOLN COUNTY
COURTHOUSE THIS 19th DAY
OF May 19 98
TAX DESCRIPTION OFFICE

A
S148