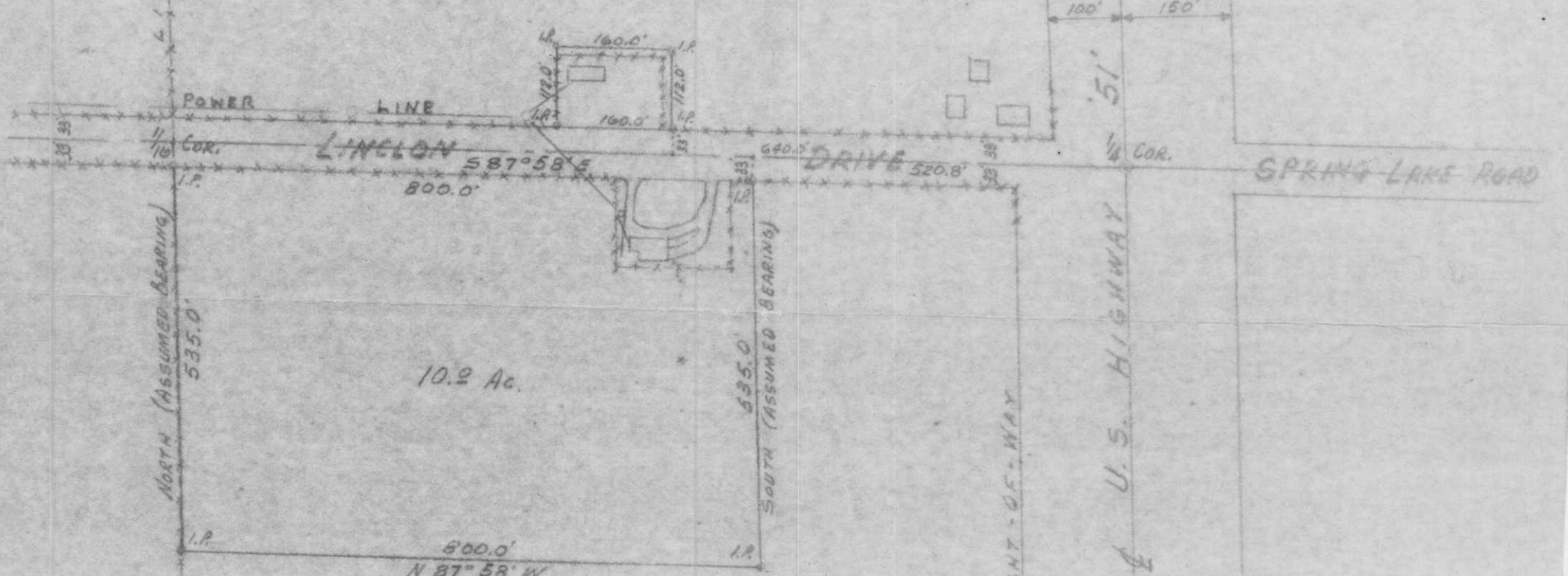


RECEIVED AT LINCOLN COUNTY  
COURTHOUSE THIS 31<sup>st</sup> DAY  
OF June 19 98  
Pat Priske  
TAX DESCRIPTION OFFICE

SE - SW

SW - SE

SECTION 7, T32N-R7E



NE - NW

NW - NE

SECTION 18, T32N-R7E

SE 1/4 - SW 1/4 SECTION 7, T32N-R7E  
AND  
NE 1/4 - NW 1/4 SECTION 18, T32N-R7E  
LINCOLN COUNTY, WIS.



*Lloyd Scott*  
SURVEYOR 5-558

SI47A

Scale: 1" = 200 FT

SCALE 1" = 200'  
FEB. 20, 1970