

REGISTER'S OFFICE  
 State of Wisconsin }  
 Lincoln County }  
 Received for Record this 13 day of  
 Aug A. D. 1947  
 at 7:10 o'clock P. M. and recorded in  
 Vol. 4 of Deeds on page 30  
 J. R. Nelson  
 Register of Deeds  
 Arthur Barry  
 Deputy

# Pertmer's Addition

TO CITY OF TOMAHAWK, WIS.

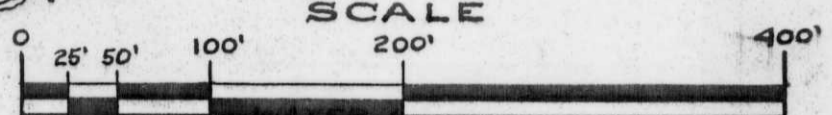
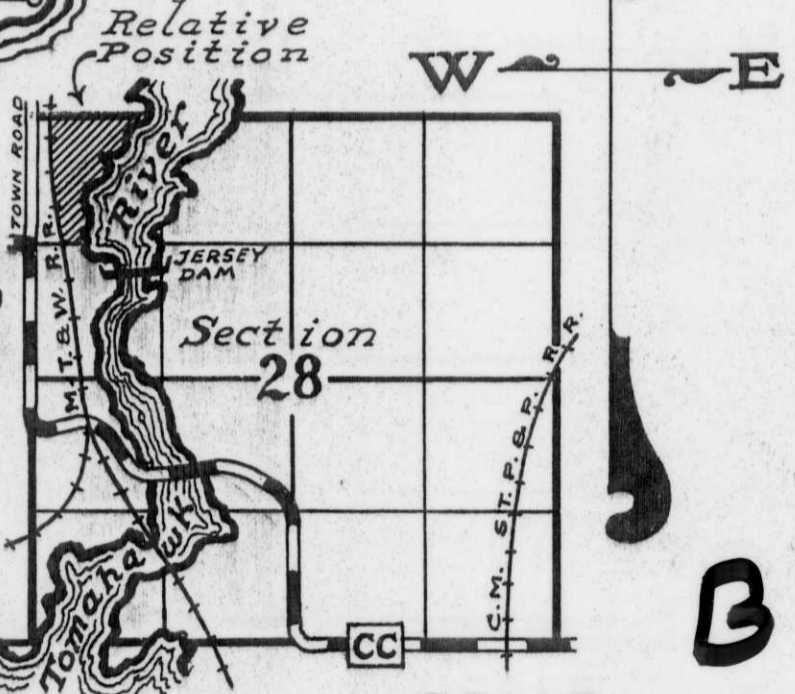
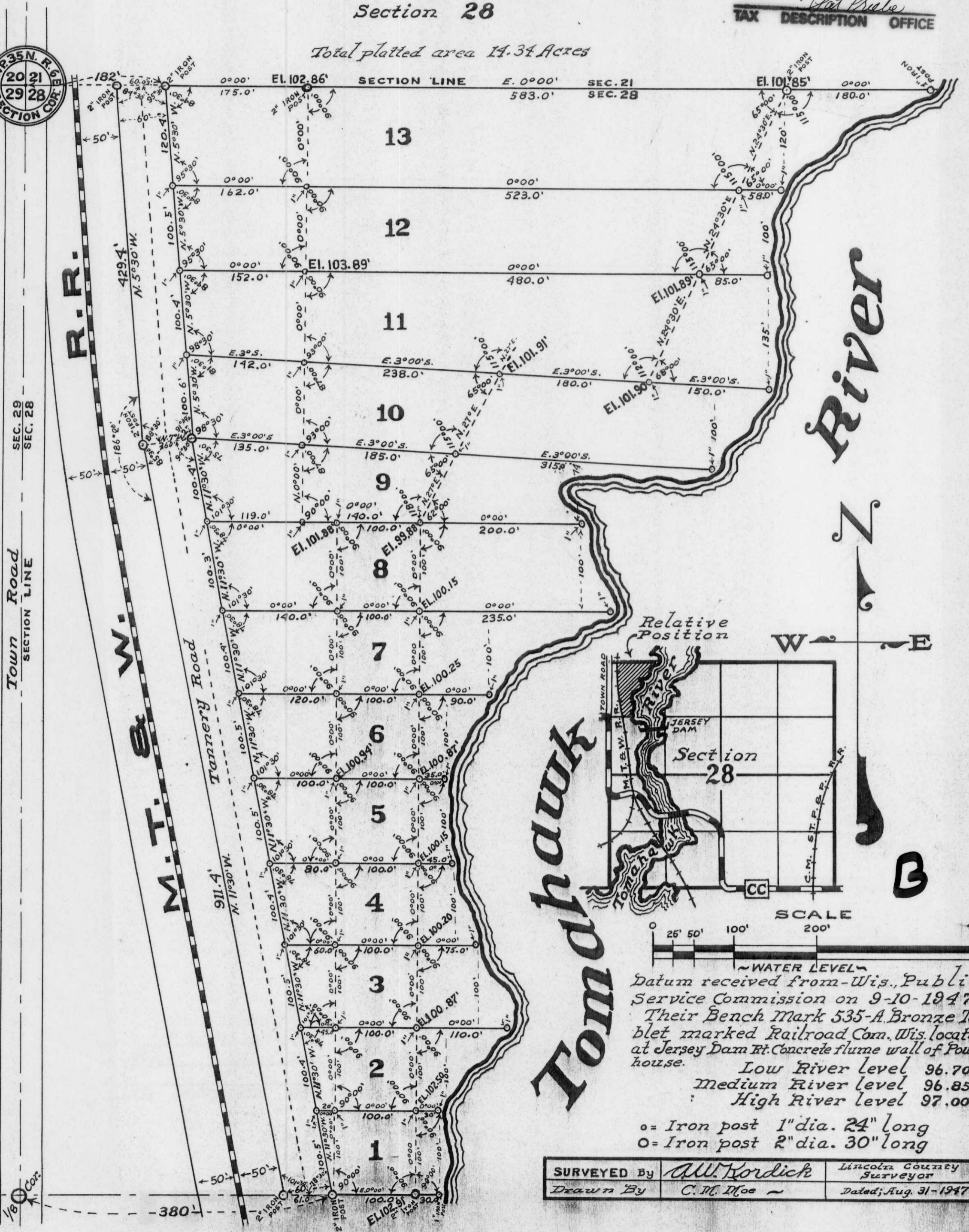
GOV'T. LOT 1 A. P. NO'S. 32 & 33

TWP. 35 N. R. 6 E.

Section 28

RECEIVED AT LINCOLN COUNTY  
 COURTHOUSE THIS 29th DAY  
 OF Aug 19 47  
 Tax Description Office

Total platted area 14.34 Acres



~ WATER LEVEL ~  
 Datum received from Wis. Public Service Commission on 9-10-1947 -  
 Their Bench Mark 535-A Bronze Tablet marked Railroad Com. Wis. located at Jersey Dam Rt. Concrete flume wall of Power house.  
 Low River level 96.70  
 Medium River level 96.85  
 High River level 97.00

o = Iron post 1" dia. 24" long  
 O = Iron post 2" dia. 30" long

SURVEYED By	<i>W. Kordick</i>	Lincoln County Surveyor
Drawn By	<i>C. M. Doe</i>	Dated; Aug. 31-1947