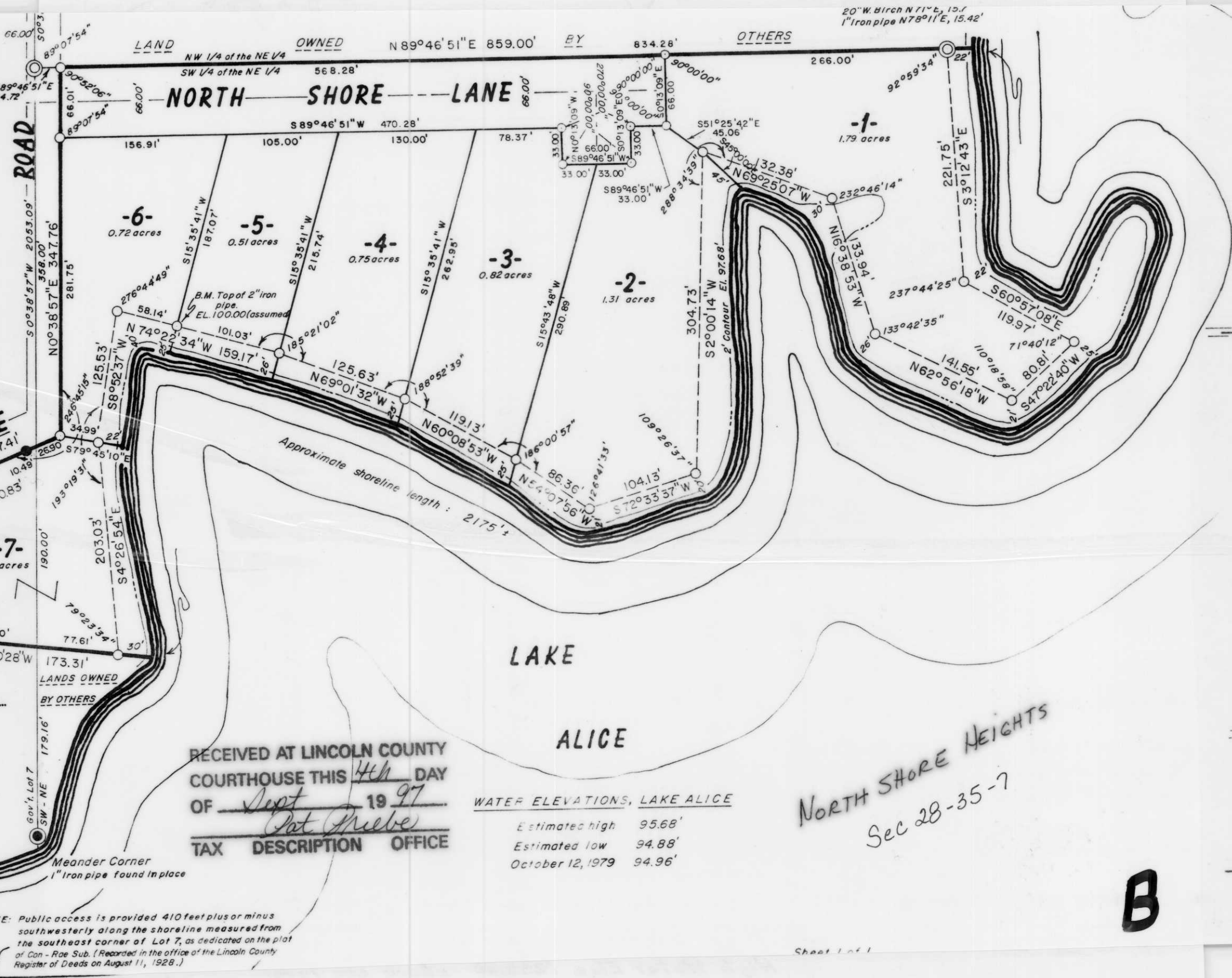


1/8 Corner
2" Iron pipe set
8" N. Pine S 62° W, 50.1'
7" N. Pine N 53° W, 49.1'
24.72'



HORSESHOE
N 67° 24' 12" E 167.41'
S 70° 22' 49" E 331.15'
S 7° 02' 49" E 103.32' 21"

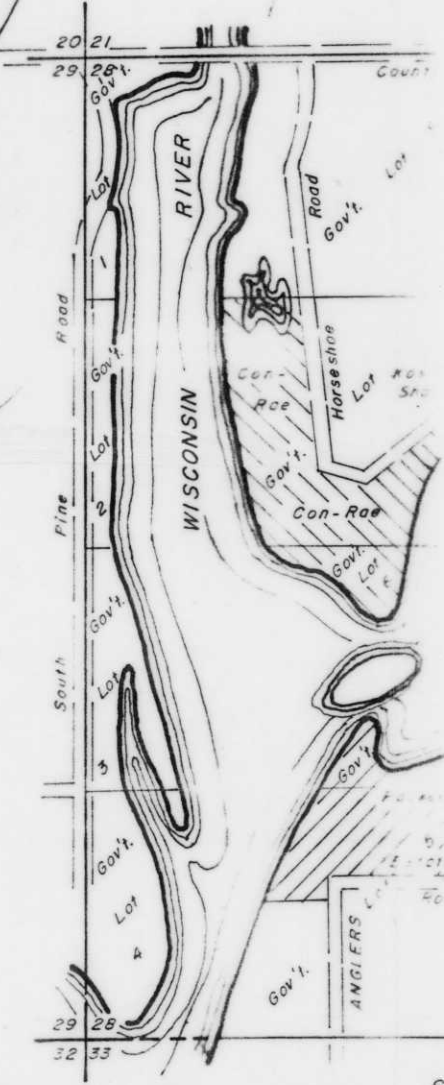
RECEIVED AT LINCOLN COUNTY
COURTHOUSE THIS 4th DAY
OF Sept 19 97
Pat Mebe
TAX DESCRIPTION OFFICE

WATER ELEVATIONS, LAKE ALICE

Estimated high	95.68'
Estimated low	94.88'
October 12, 1979	94.96'

NORTH SHORE HEIGHTS
Sec 28-35-7

NOTE: Public access is provided 410 feet plus or minus southwesterly along the shoreline measured from the southeast corner of Lot 7, as dedicated on the plat of Con-Roe Sub. (Recorded in the office of the Lincoln County Register of Deeds on August 11, 1928.)



B