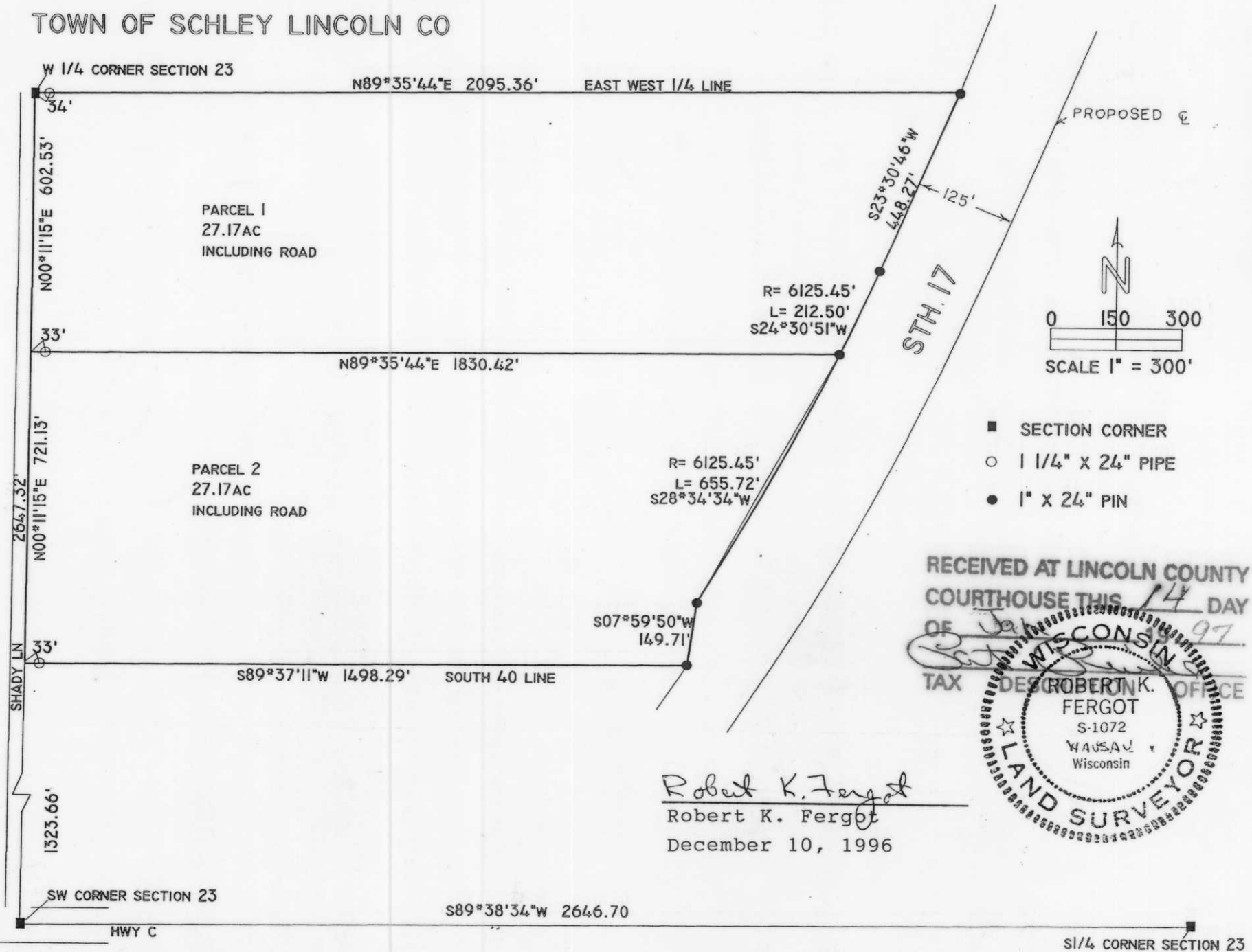


SW 1/4 SECTION 23, T32N, R7E
TOWN OF SCHLEY LINCOLN CO



RECEIVED AT LINCOLN COUNTY
COURTHOUSE THIS 14 DAY
OF JANUARY 1997

TAX DESK OFFICE

ROBERT K. FERGOT
S-1072
WAUSAU
Wisconsin

LAND SURVEYOR

Robert K. Fergot
Robert K. Fergot
December 10, 1996

S137A

SW 1/4 CORNER SECTION 23