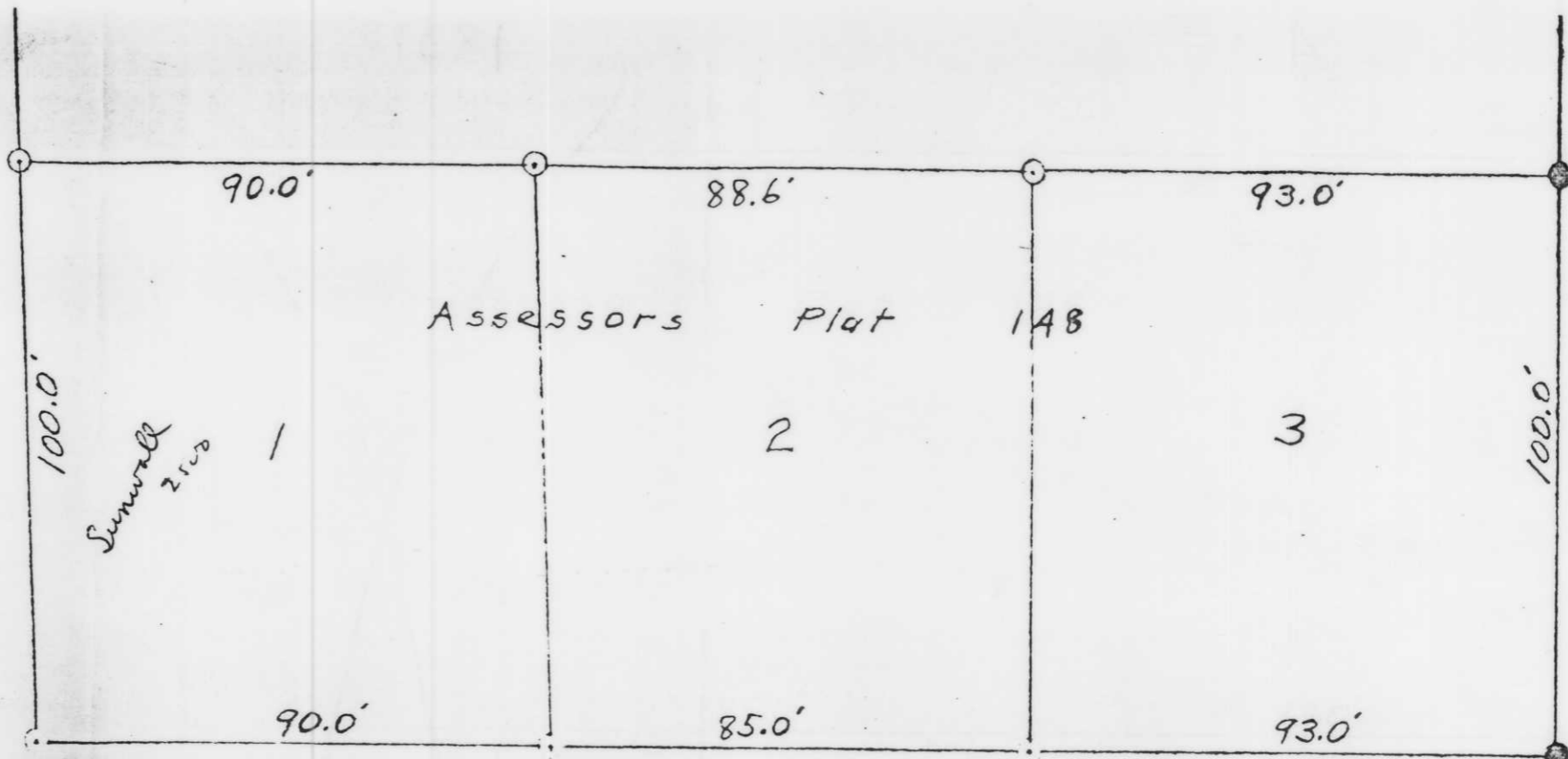


E U.S. 51



60.0'



Assessors Plat 148

Sumner 2100 1

2

3

100.0'

90.0'

88.6'

93.0'

90.0'

85.0'

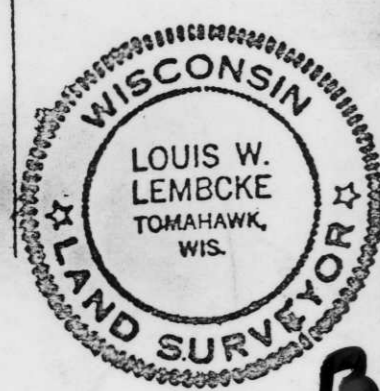
93.0'

100.0'

20'

Brief Ave.

Theiler Dr.



B

Surveyed 6-2-67
for William Garlow
by Louis W. Lembcke

- steel pipe (found in place)
- steel pipe (set)

RECEIVED AT LINCOLN COUNTY
COURTHOUSE HIS 13 DAY
OF Sept 19 94

Pat Miller
TAX DESCRIPTION OFFICE

S.E. Corner of the S.W. 1/4 - NW 1/4
Section 3-T34N-R6E

1/4 Section line

300.0'
not to scale