

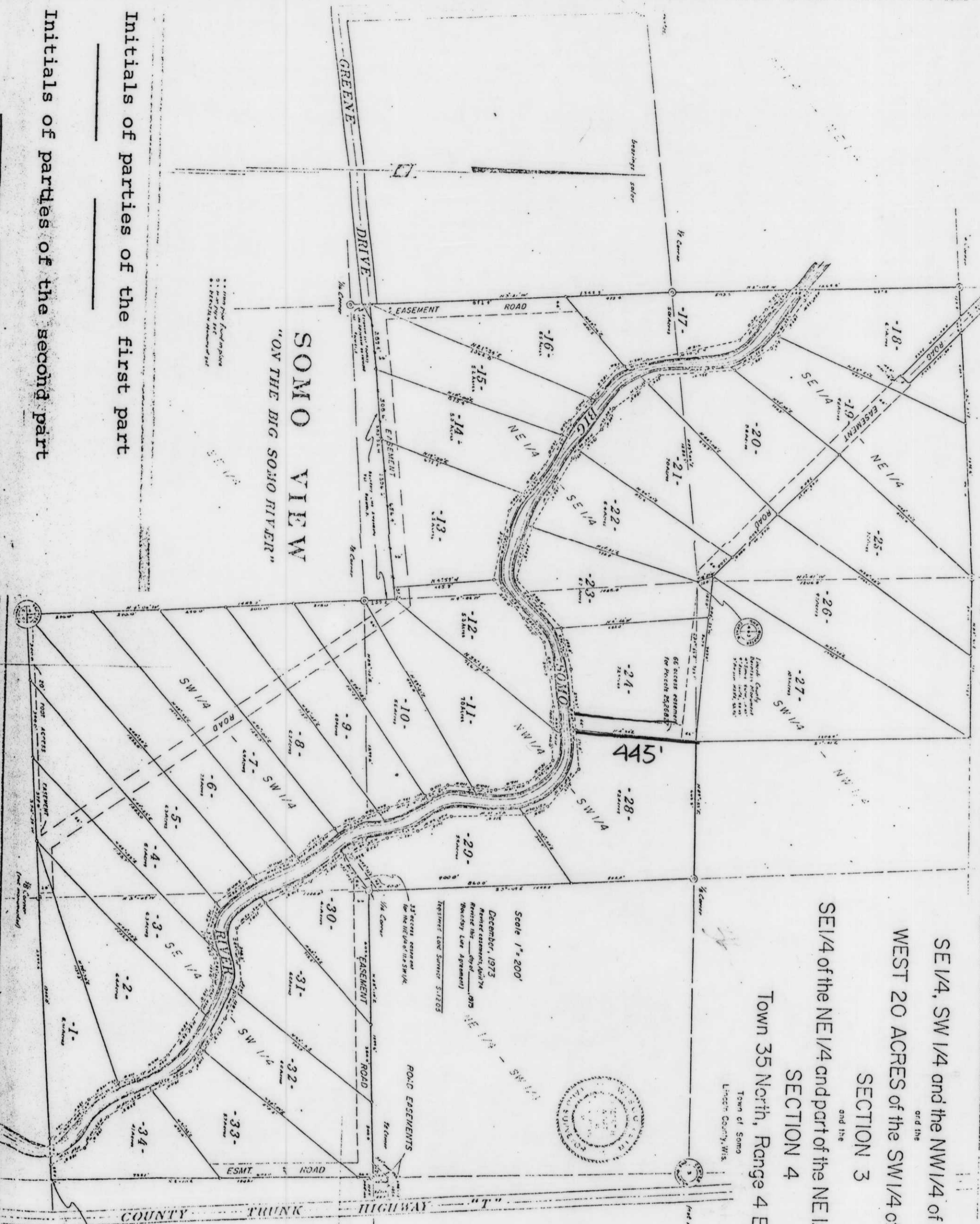
S120A

SE 1/4, SW 1/4 and the NW 1/4 of the SW 1/4
and the
WEST 20 ACRES of the SW 1/4 of the NW 1/4
SECTION 3
and the
SE 1/4 of the NE 1/4 and part of the NE 1/4 of the SE 1/4
SECTION 4
Town 35 North, Range 4 East
Town of Somo
Lincoln County, Wis.



Scale 1" = 200'
December, 1973
Revised easement, April 74
Revised this _____, 1973
Boundary Line Agreement
Registered Land Survey S-17205

SOMO VIEW "OV THE BIG SOMO RIVER"



Initials of parties of the first part

Initials of parties of the second part

CARPENT