

I hereby certify that I have made this survey and map at the direction of the Wisconsin Valley Improvement Company between April, 1987, and March, 1990, and that the survey and map are correct and complete to the best of my knowledge and belief.

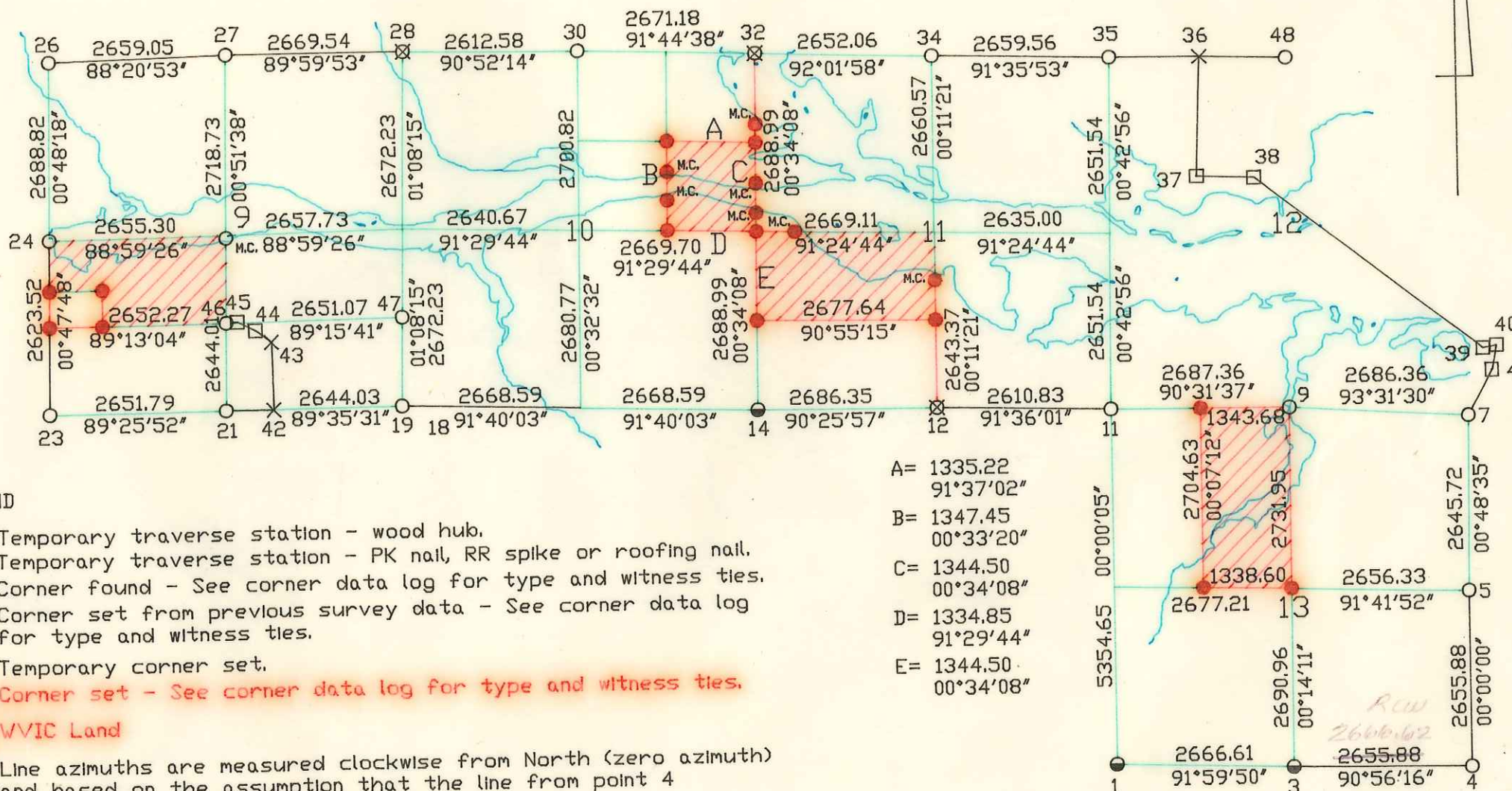
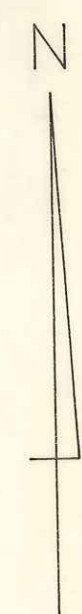
Robert C. Wylie RLS-66



SPIRIT RESERVOIR LAND SURVEY

Township 34 North, Range 5 East

Property Lines Run and Corners Set



LEGEND

- Temporary traverse station - wood hub.
- × Temporary traverse station - PK nail, RR spike or roofing nail.
- Corner found - See corner data log for type and witness ties.
- ⊗ Corner set from previous survey data - See corner data log for type and witness ties.
- Temporary corner set.
- Corner set - See corner data log for type and witness ties.
- ▨ WVIC Land

- A= 1335.22
91°37'02"
- B= 1347.45
00°33'20"
- C= 1344.50
00°34'08"
- D= 1334.85
91°29'44"
- E= 1344.50
00°34'08"

Line azimuths are measured clockwise from North (zero azimuth) and based on the assumption that the line from point 4 to point 5, Eastern Traverse, is 00°00'00".

Green lines calculated from traverse data.

Red lines run in the field.

See Survey notes for distances to meander corners set.

To convert to state plane coordinate system grid north subtract 00°20'35" from azimuths shown.

RECEIVED AT LINCOLN COUNTY
COURTHOUSE THIS 2 DAY
OF May 1990
Bob Wylie
TAX DESCRIPTION OFFICE

March, 1990
Dwg.# 89003-A

S110A

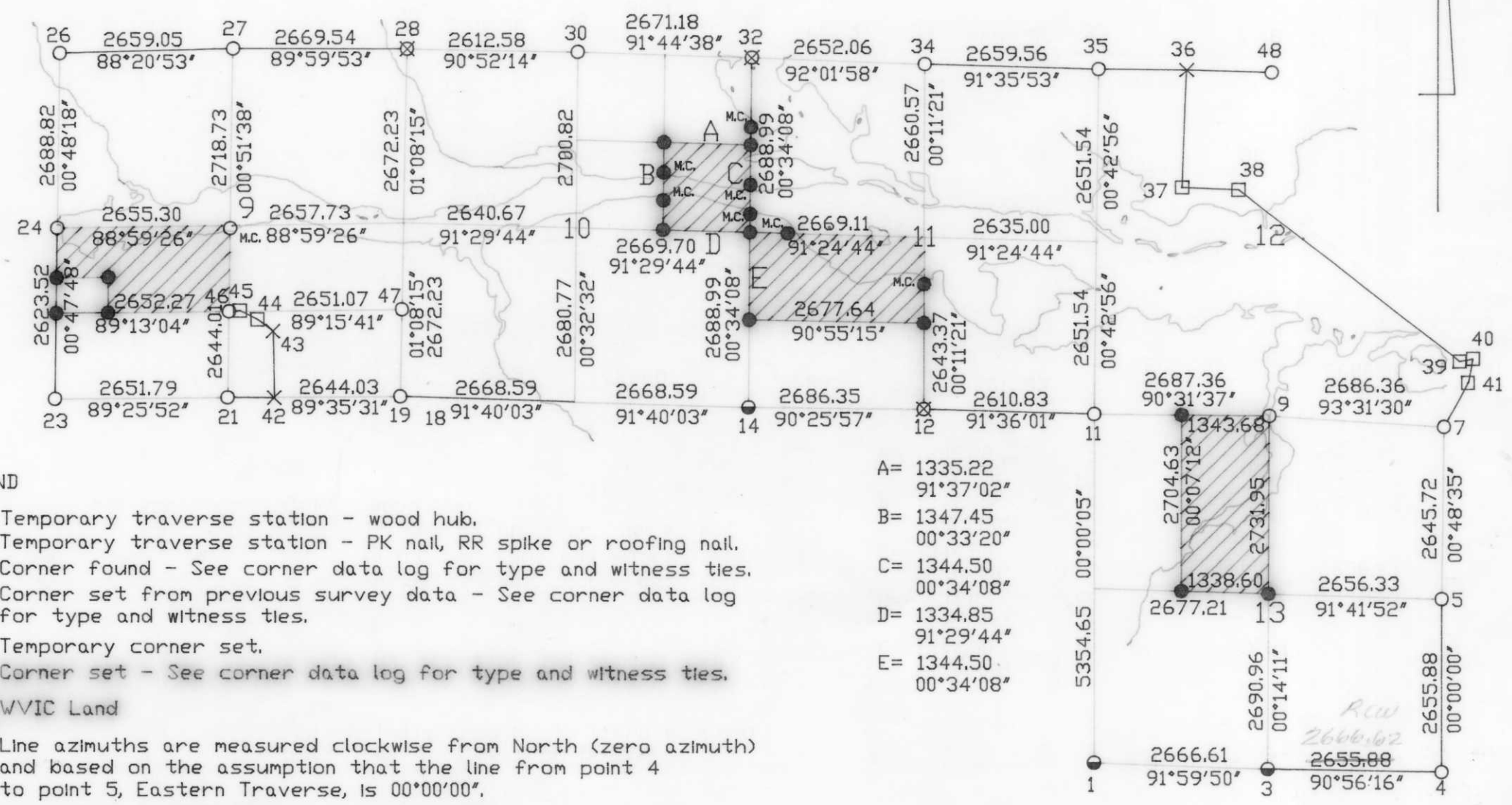
I hereby certify that I have made this survey and map at the direction of the Wisconsin Valley Improvement Company between April, 1987, and March, 1990, and that the survey and map are correct and complete to the best of my knowledge and belief.

Robert C. Wylie
 Robert C. Wylie RLS-66
 WISCONSIN REGISTERED LAND SURVEYOR
 WAUSAU, WIS.
 Date

SPIRIT RESERVOIR LAND SURVEY

Township 34 North, Range 5 East

Property Lines Run and Corners Set



S110A

RECEIVED AT LINCOLN COUNTY
 COURTHOUSE THIS 2 DAY
 OF May 1990
Bob Wylie
 TAX DESCRIPTION OFFICE

LEGEND

- Temporary traverse station - wood hub.
- × Temporary traverse station - PK nail, RR spike or roofing nail.
- Corner found - See corner data log for type and witness ties.
- ⊗ Corner set from previous survey data - See corner data log for type and witness ties.
- Temporary corner set.
- Corner set - See corner data log for type and witness ties.
- ▨ WVIC Land

Line azimuths are measured clockwise from North (zero azimuth) and based on the assumption that the line from point 4 to point 5, Eastern Traverse, is 00°00'00".

Green lines calculated from traverse data.
 Red lines run in the field.
 See Survey notes for distances to meander corners set.
 To convert to state plane coordinate system grid north subtract 00°20'35" from azimuths shown.

March, 1990
 Dwg.# 89003-A

I hereby certify that I have made this survey and map at the direction of the Wisconsin Valley Improvement Company between April, 1987, and March, 1990, and that the survey and map are correct and complete to the best of my knowledge and belief.

Robert C. Wylie
 Robert C. Wylie
 RLS-66

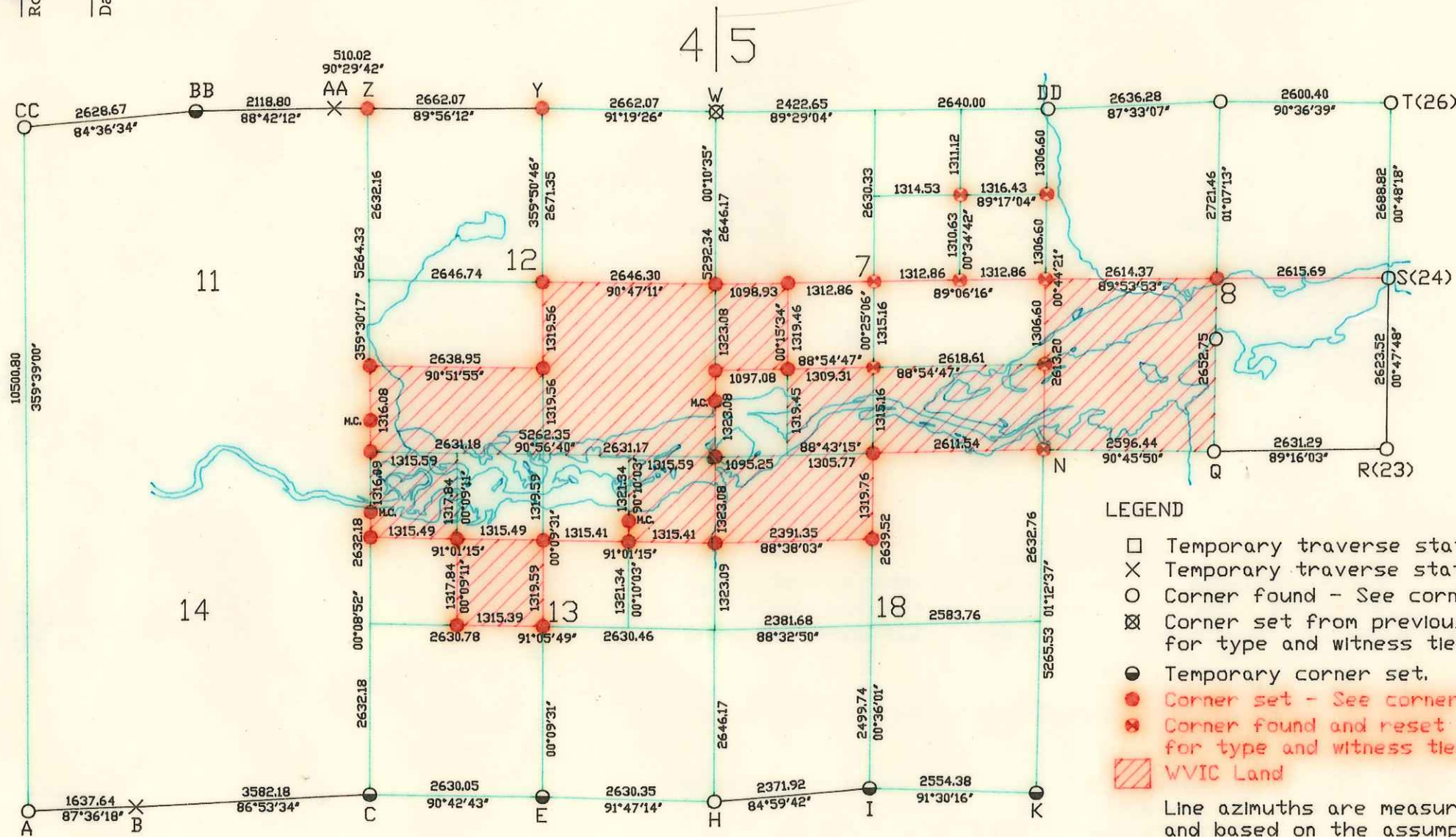


Date April 30, 1990

SPIRIT RESERVOIR LAND SURVEY

Township 34 North, Ranges 4 and 5 East

Property Lines Run and Corners Set



RECEIVED AT LINCOLN COUNTY
 COURTHOUSE THIS 2 DAY
 OF May 1990
Pat Prine
 TAX DESCRIPTION OFFICE

LEGEND

- Temporary traverse station - wood hub.
- × Temporary traverse station - PK nail, RR spike or roofing nail.
- Corner found - See corner data log for type and witness ties.
- ⊗ Corner set from previous survey data - See corner data log for type and witness ties.
- Temporary corner set.
- Corner set - See corner data log for type and witness ties.
- Corner found and reset - See corner data log for type and witness ties.
- ▨ WVIC Land

Line azimuths are measured clockwise from North (zero azimuth) and based on the assumption that the line from point 4 to point 5, Eastern Traverse, is 00°00'00".

Green lines calculated from traverse data.

Red lines run in the field.

See Survey notes for distances to meander corners set.

To convert to state plane coordinate system grid north subtract 00°20'35" from azimuths shown.

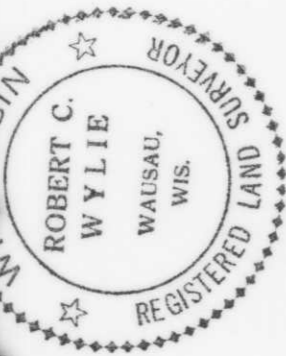
B

March, 1990
 Dwg.# 89006-A

I hereby certify that I have made this survey and map at the direction of the Wisconsin Valley Improvement Company between April, 1987, and March, 1990, and that the survey and map are correct and complete to the best of my knowledge and belief.

Robert C. Wylie
 Robert C. Wylie RLS-66

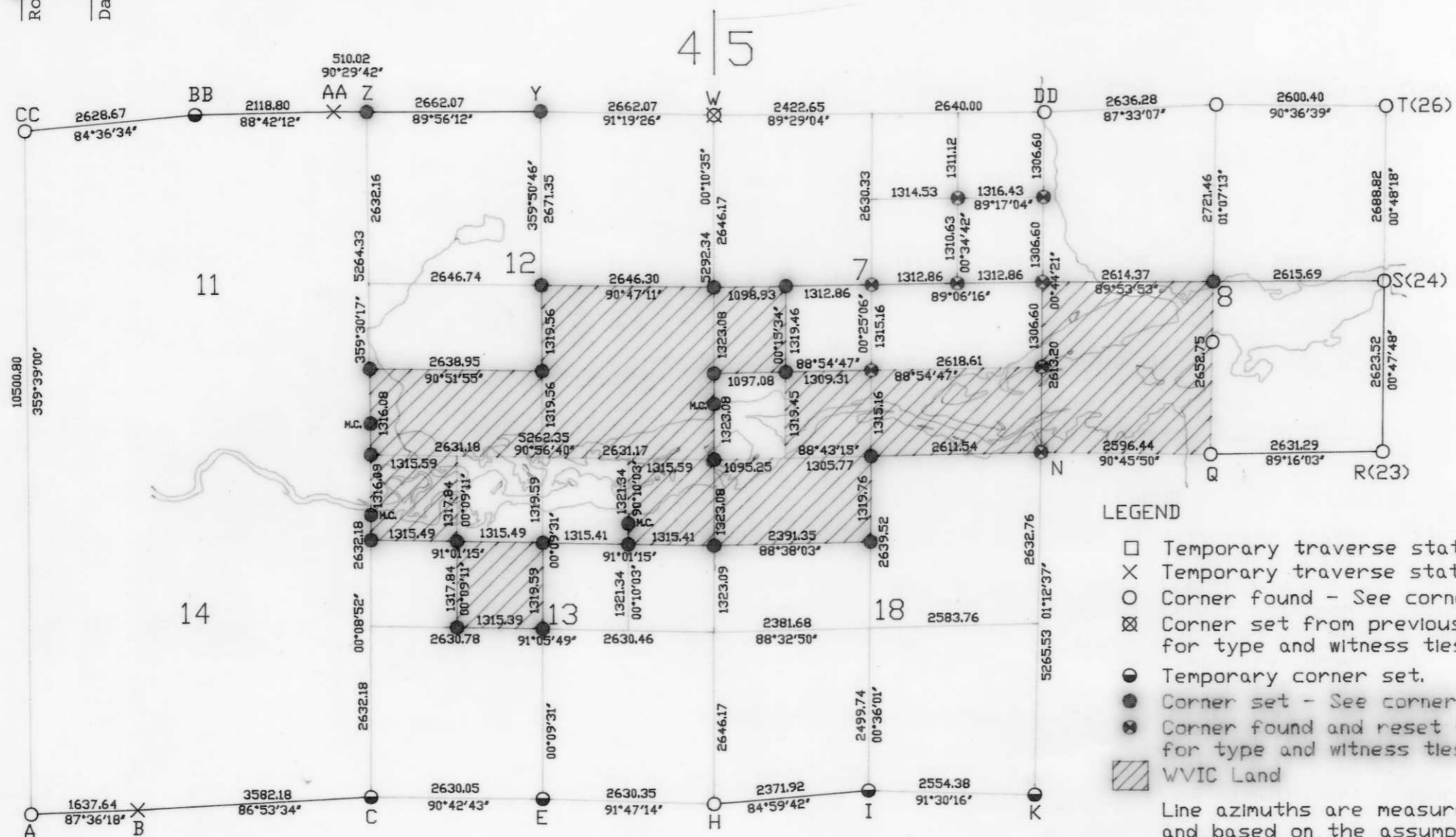
April 29, 1990
 Date



SPIRIT RESERVOIR LAND SURVEY

Township 34 North, Ranges 4 and 5 East

Property Lines Run and Corners Set



RECEIVED AT LINCOLN COUNTY
 COURTHOUSE THIS 2 DAY
 OF May 1990
Pat Rinker
 TAX DESCRIPTION OFFICE

LEGEND

- Temporary traverse station - wood hub.
- × Temporary traverse station - PK nail, RR spike or roofing nail.
- Corner found - See corner data log for type and witness ties.
- ⊗ Corner set from previous survey data - See corner data log for type and witness ties.
- Temporary corner set.
- Corner set - See corner data log for type and witness ties.
- ⊗ Corner found and reset - See corner data log for type and witness ties.
- ▨ WVIC Land

Line azimuths are measured clockwise from North (zero azimuth) and based on the assumption that the line from point 4 to point 5, Eastern Traverse, is 00°00'00".

Green lines calculated from traverse data.

Red lines run in the field.

See Survey notes for distances to meander corners set.

To convert to state plane coordinate system grid north subtract 00°20'35" from azimuths shown.

B

March, 1990
 Dwg.# 89006-A

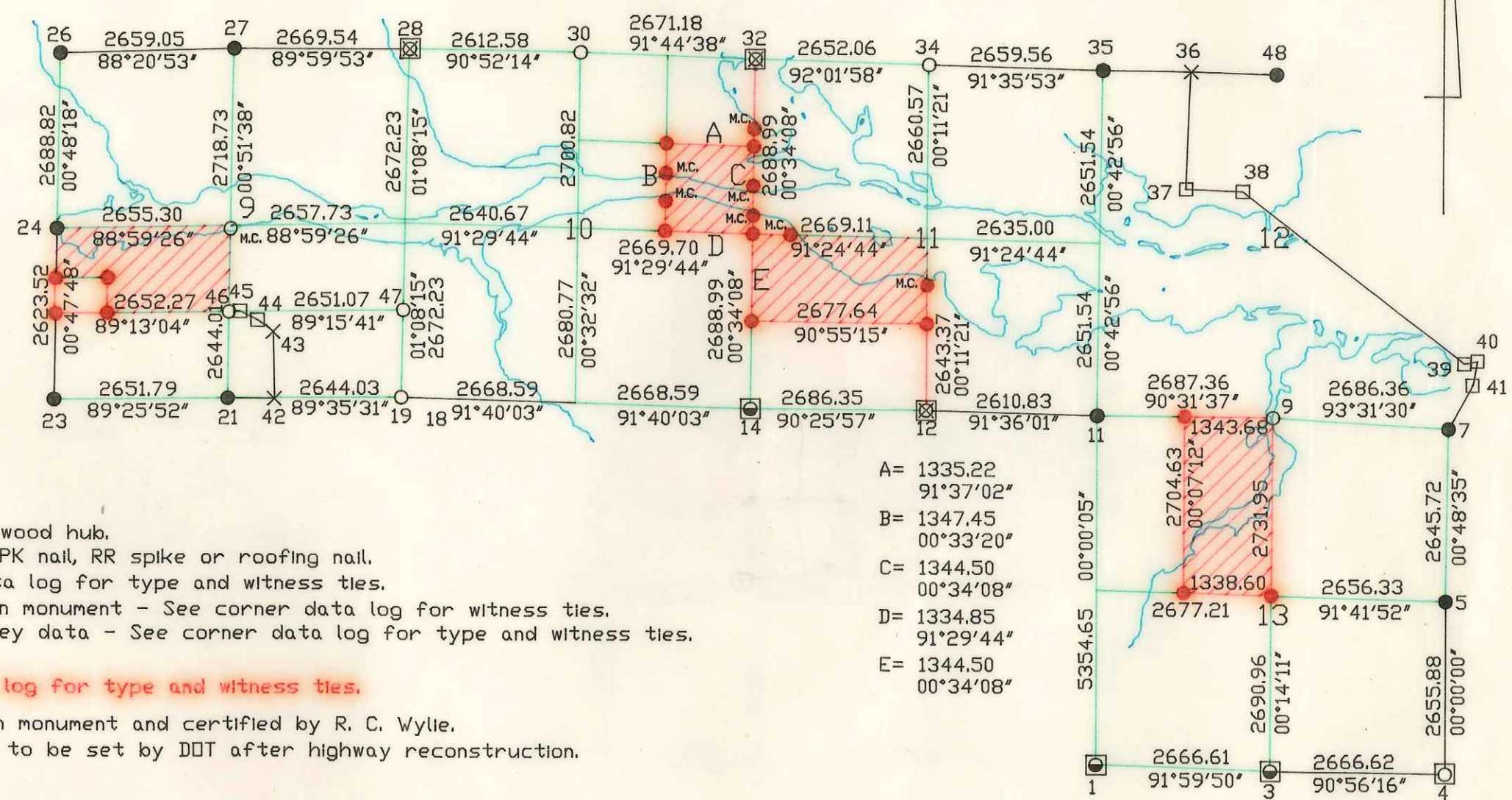
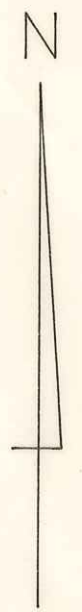
Line

20115

SPIRIT RESERVOIR LAND SURVEY

Township 34 North, Range 5 East

Property Lines Run and Corners Set



LEGEND

- Temporary traverse station - wood hub.
- × Temporary traverse station - PK nail, RR spike or roofing nail.
- Corner found - See corner data log for type and witness ties.
- Certified corner found-Berntsen monument - See corner data log for witness ties.
- ⊗ Corner set from previous survey data - See corner data log for type and witness ties.
- Temporary corner set.
- Corner set - See corner data log for type and witness ties.
- ⊗ } Corner replaced by Berntsen monument and certified by R. C. Wylie.
- ⊗ } Note: Monuments on STH "86" to be set by DDT after highway reconstruction.

WVIC Land

Line azimuths are measured clockwise from North (zero azimuth) and based on the assumption that the line from point 4 to point 5, Eastern Traverse, is 00°00'00".

Green lines calculated from traverse data.

Red lines run in the field.

See Survey notes for distances to meander corners set.

To convert to state plane coordinate system grid north subtract 00°20'35" from azimuths shown.

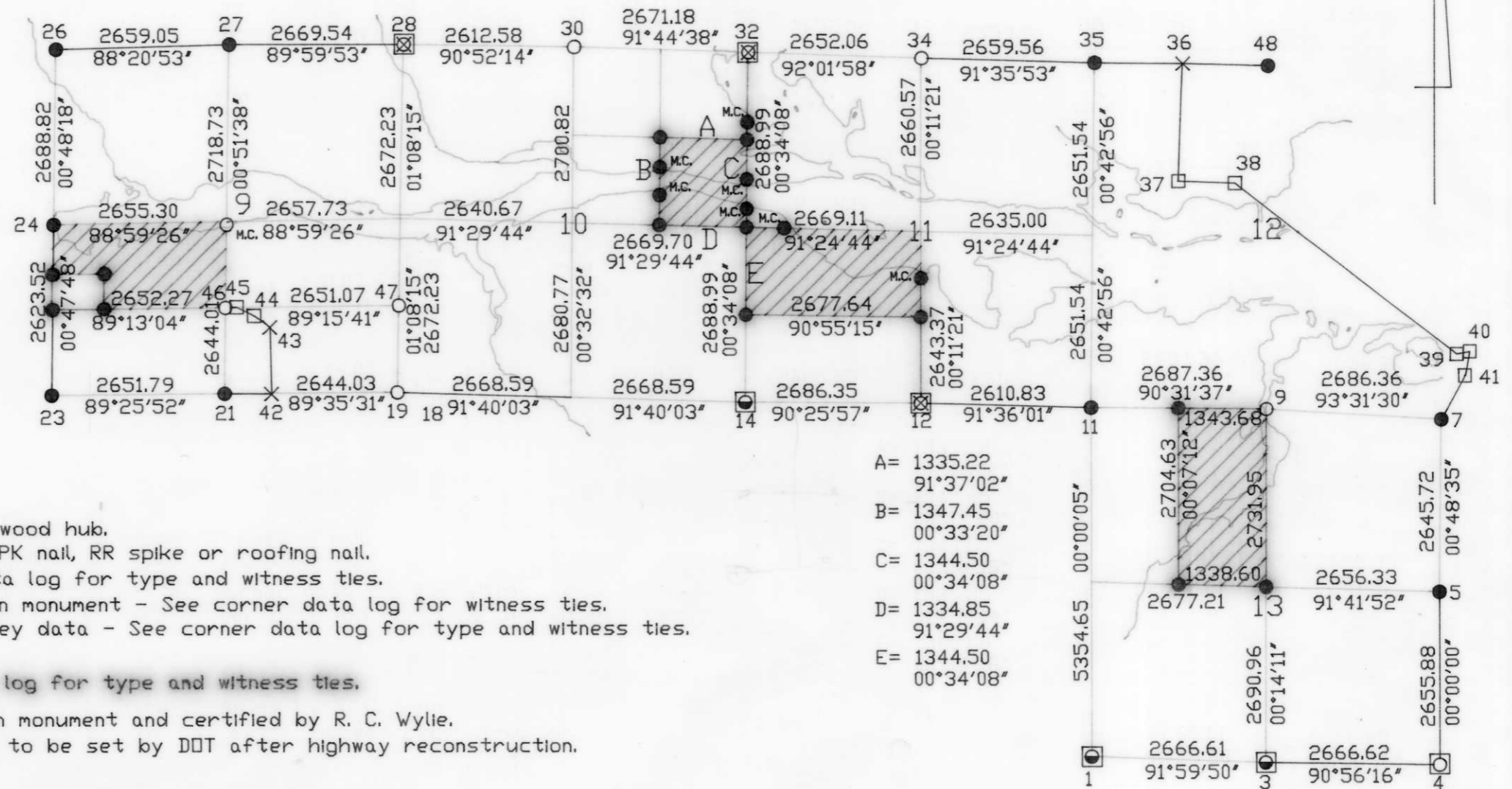
A=	1335.22
	91°37'02"
B=	1347.45
	00°33'20"
C=	1344.50
	00°34'08"
D=	1334.85
	91°29'44"
E=	1344.50
	00°34'08"

C

SPIRIT RESERVOIR LAND SURVEY

Township 34 North, Range 5 East

Property Lines Run and Corners Set



LEGEND

- Temporary traverse station - wood hub.
- × Temporary traverse station - PK nail, RR spike or roofing nail.
- Corner found - See corner data log for type and witness ties.
- Certified corner found - Berntsen monument - See corner data log for witness ties.
- ⊠ Corner set from previous survey data - See corner data log for type and witness ties.
- Temporary corner set.
- Corner set - See corner data log for type and witness ties.

○ } Corner replaced by Berntsen monument and certified by R. C. Wylie.
⊠ } Note: Monuments on STH "86" to be set by DDT after highway reconstruction.

WWIC Land

Line azimuths are measured clockwise from North (zero azimuth) and based on the assumption that the line from point 4 to point 5, Eastern Traverse, is 00°00'00".

Green lines calculated from traverse data.

Red lines run in the field.

See Survey notes for distances to meander corners set.

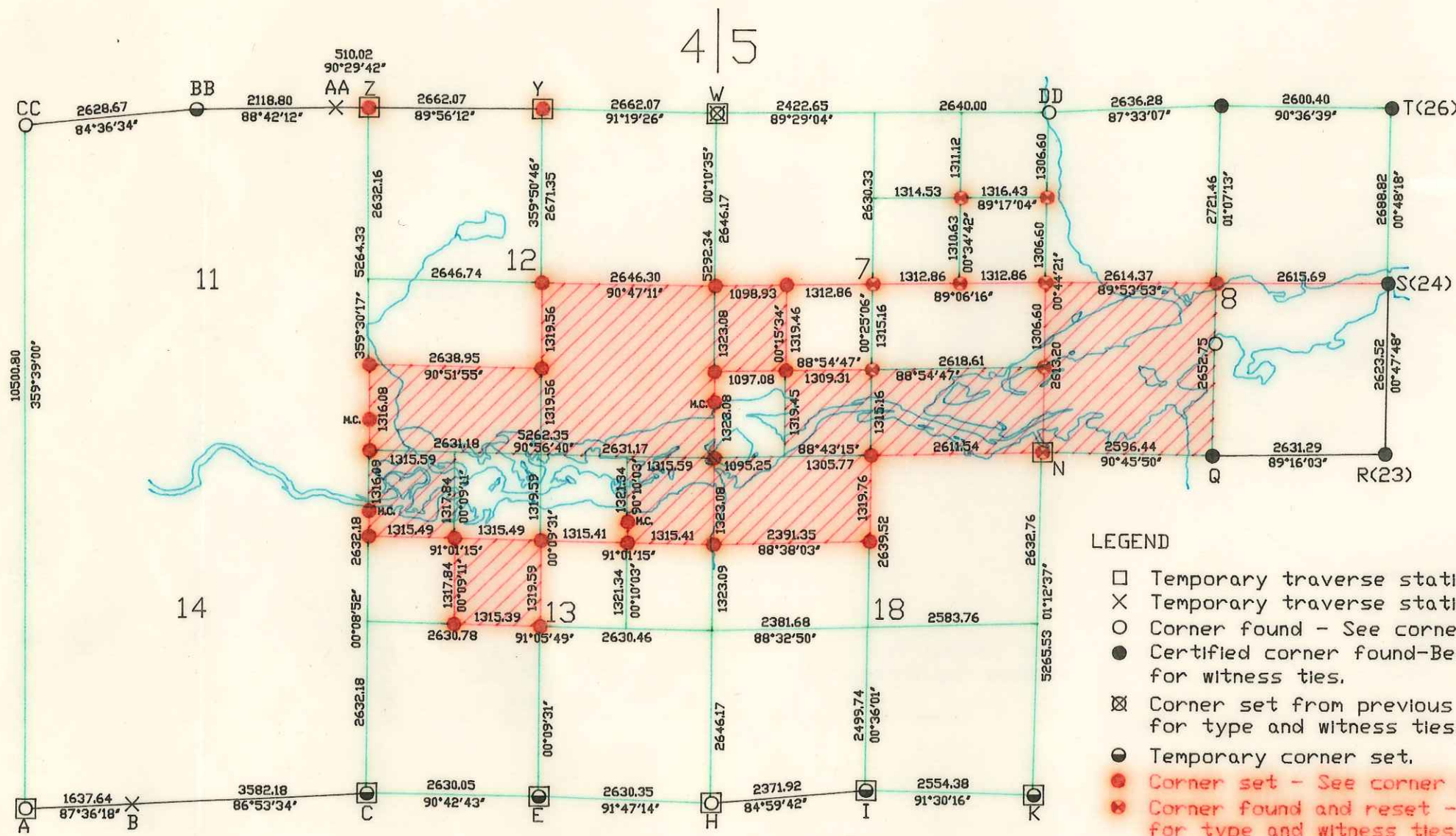
To convert to state plane coordinate system grid north subtract 00°20'35" from azimuths shown.

A=	1335.22
	91°37'02"
B=	1347.45
	00°33'20"
C=	1344.50
	00°34'08"
D=	1334.85
	91°29'44"
E=	1344.50
	00°34'08"

C

SPIRIT RESERVOIR LAND SURVEY

Township 34 North, Ranges 4 and 5 East
Property Lines Run and Corners Set



LEGEND

- Temporary traverse station - wood hub.
 - × Temporary traverse station - PK nail, RR spike or roofing nail.
 - Corner found - See corner data log for type and witness ties.
 - Certified corner found - Berntsen monument - See corner data log for witness ties.
 - ⊠ Corner set from previous survey data - See corner data log for type and witness ties.
 - Temporary corner set.
 - Corner set - See corner data log for type and witness ties.
 - ⊠ Corner found and reset - See corner data log for type and witness ties.
-
- ⊠ } Corner replaced by Berntsen monument and certified by R. C. Wylie.
Note: Monuments on STH "86" to be set by DOT after highway reconstruction.
 - ⊠ } WVIC Land

Line azimuths are measured clockwise from North (zero azimuth) and based on the assumption that the line from point 4 to point 5, Eastern Traverse, is 00°00'00".

Green lines calculated from traverse data.

Red lines run in the field.

See Survey notes for distances to meander corners set.

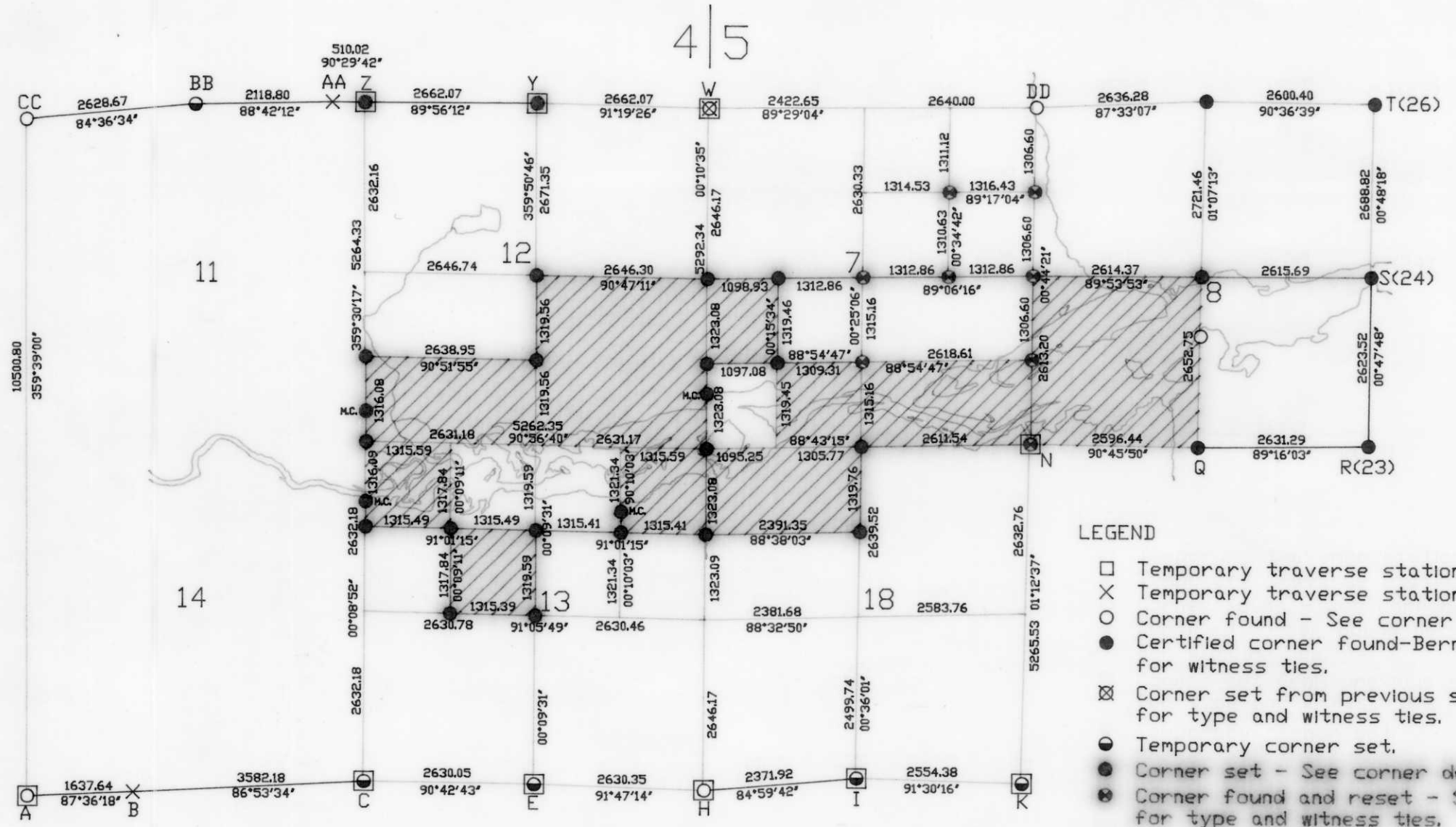
To convert to state plane coordinate system grid north subtract 00°20'35" from azimuths shown.

D

SPIRIT RESERVOIR LAND SURVEY

Township 34 North, Ranges 4 and 5 East

Property Lines Run and Corners Set



LEGEND

- Temporary traverse station - wood hub.
 - × Temporary traverse station - PK nail, RR spike or roofing nail.
 - Corner found - See corner data log for type and witness ties.
 - Certified corner found - Berntsen monument - See corner data log for witness ties.
 - ⊗ Corner set from previous survey data - See corner data log for type and witness ties.
 - Temporary corner set.
 - Corner set - See corner data log for type and witness ties.
 - ⊗ Corner found and reset - See corner data log for type and witness ties.
-
- } Corner replaced by Berntsen monument and certified by R. C. Wylie.
 - } Note: Monuments on STH "86" to be set by DDT after highway reconstruction.
 - ⊗ }
 - }
-
- ▨ WVIC Land

Line azimuths are measured clockwise from North (zero azimuth) and based on the assumption that the line from point 4 to point 5, Eastern Traverse, is 00°00'00".

Green lines calculated from traverse data.

Red lines run in the field.

See Survey notes for distances to meander corners set.

To convert to state plane coordinate system grid north subtract 00°20'35" from azimuths shown.

D