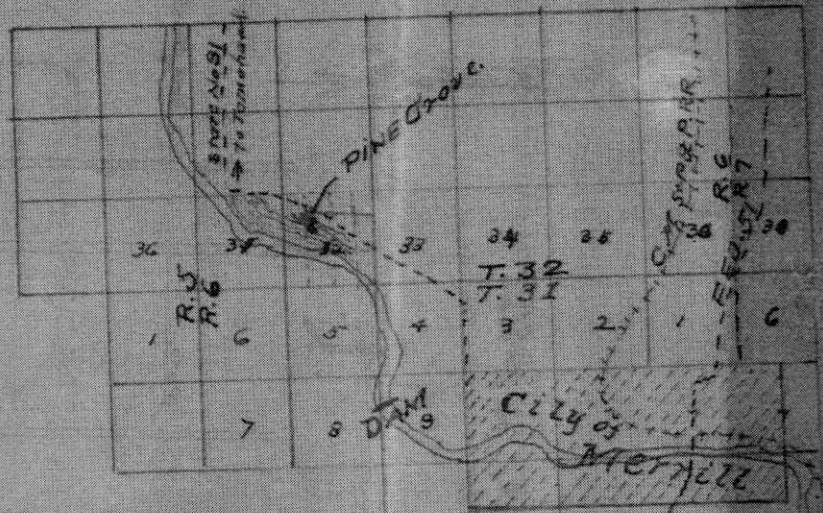
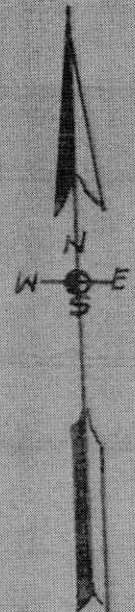
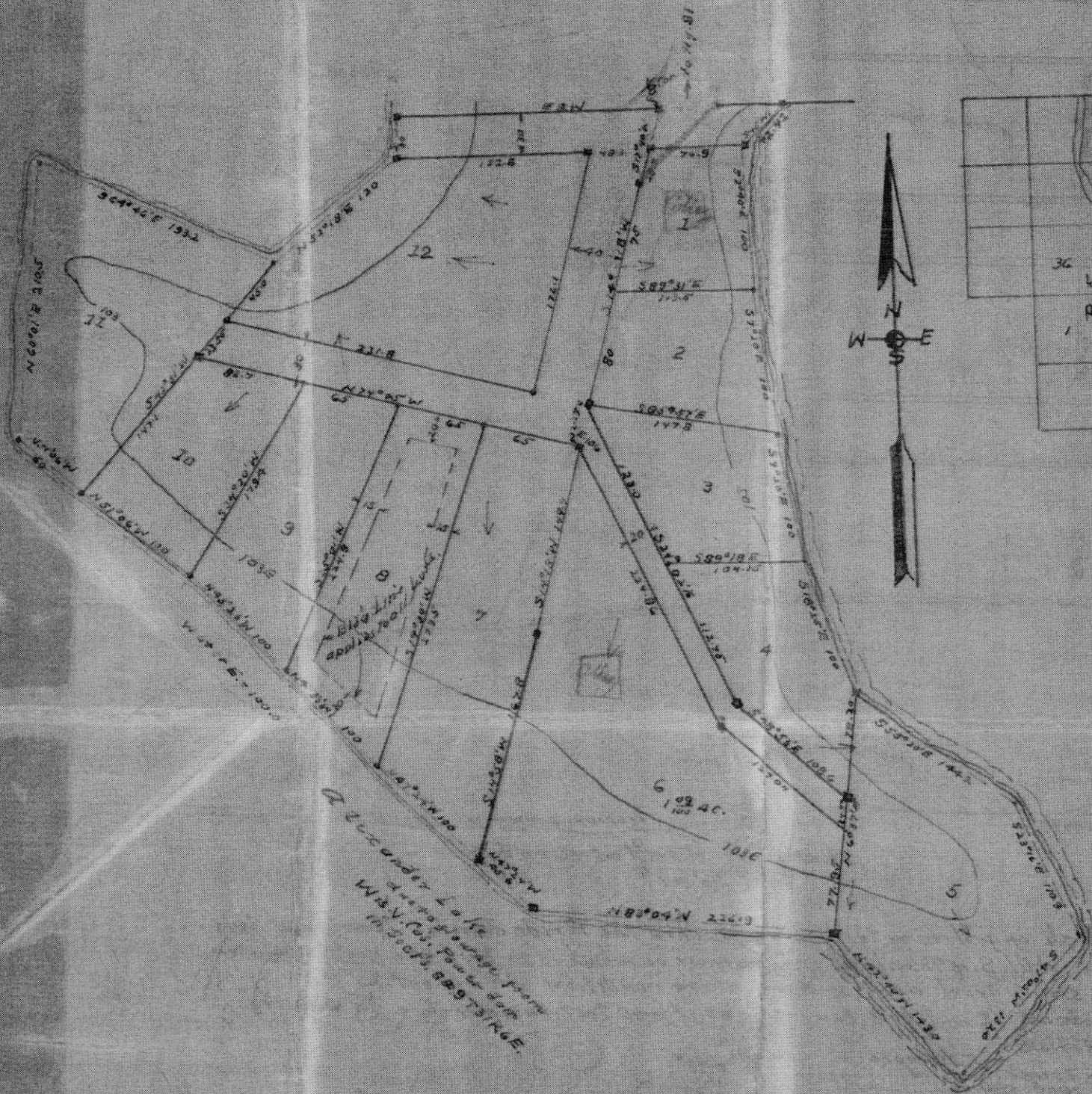


PLAT OF  
**PINE GROVE**  
 LINCOLN Co Wisc.  
 Scale 100' = 1 inch  
 1933



Sketch of PINE GROVE  
 filed to City of Merrill  
 and principal highways

• = 10-reinforced concrete "round 36"  
 • = Iron pipe  
 Typical 8" lines shown by dotted lines on Lot 8 and applies to all lots.  
 → = Direction surface drainage.

32-32-6  
 NW 1/4

**S106** A