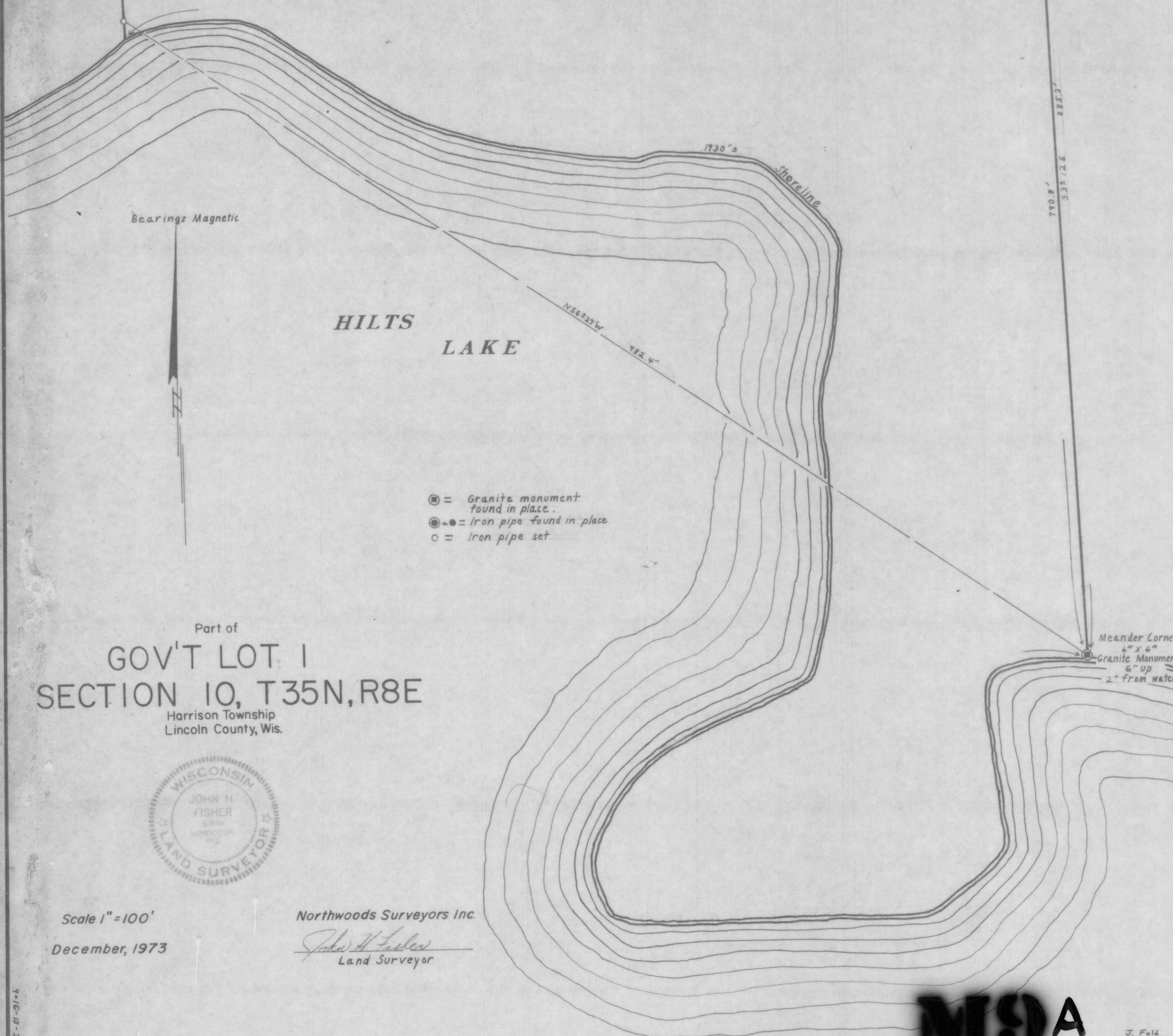
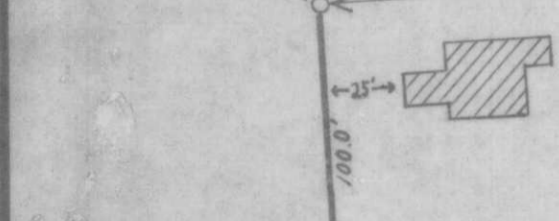


Approximate line 1220' south of and parallel to north line of Gov't Lot 1
as established by others
787'±

RECEIVED AT LINCOLN COUNTY
COURTHOUSE THIS 2 DAY
OF 1974
TAX DESCRIPTION OFFICE

1/8 Corner
(by others)
6" Maple S80°W 65'
5" Ironwood N33°W 53'
Erroneous iron pipe
N89°42'W 17'

ROAD

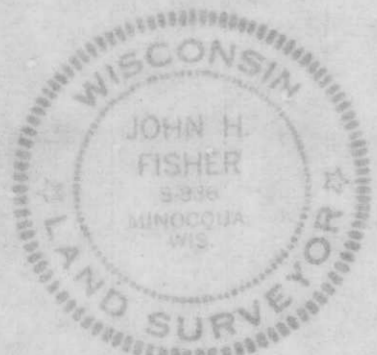


Bearings Magnetic

HILTS
LAKE

- = Granite monument found in place.
- = Iron pipe found in place.
- = Iron pipe set

Part of
GOV'T LOT 1
SECTION 10, T35N, R8E
Harrison Township
Lincoln County, Wis.



Scale 1" = 100'
December, 1973

Northwoods Surveyors Inc.
John H. Fisher
Land Surveyor

M9A

9-16-10-358