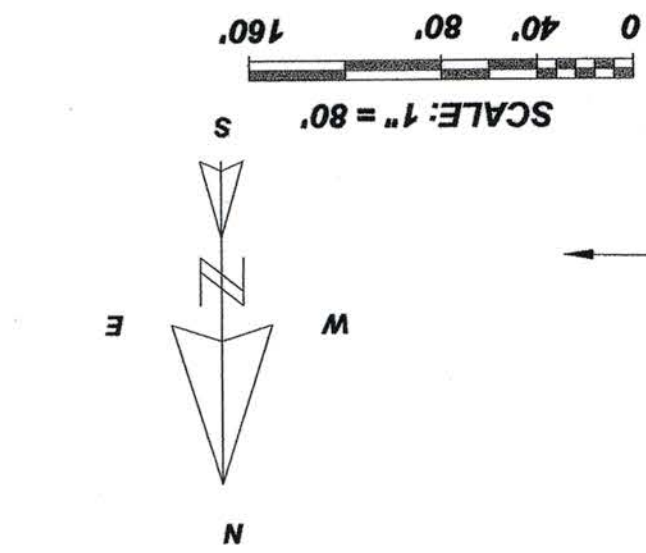


# SECOND ADDENDUM TO PINE CREEK CONDOMINIUMS

LOCATED IN THE NE 1/4 - NE 1/4, SE 1/4 - NE 1/4, SW 1/4 - NE 1/4, SECTION 28, T35N, R07E, TOWN OF KING, LINCOLN COUNTY, WISCONSIN

NORTHEAST CORNER SECTION 28

BEARINGS REF. TO THE FIRST ADDENDUM PINE CREEK CONDO'S.



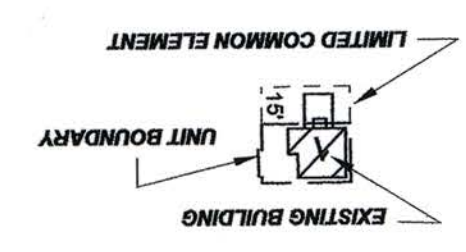
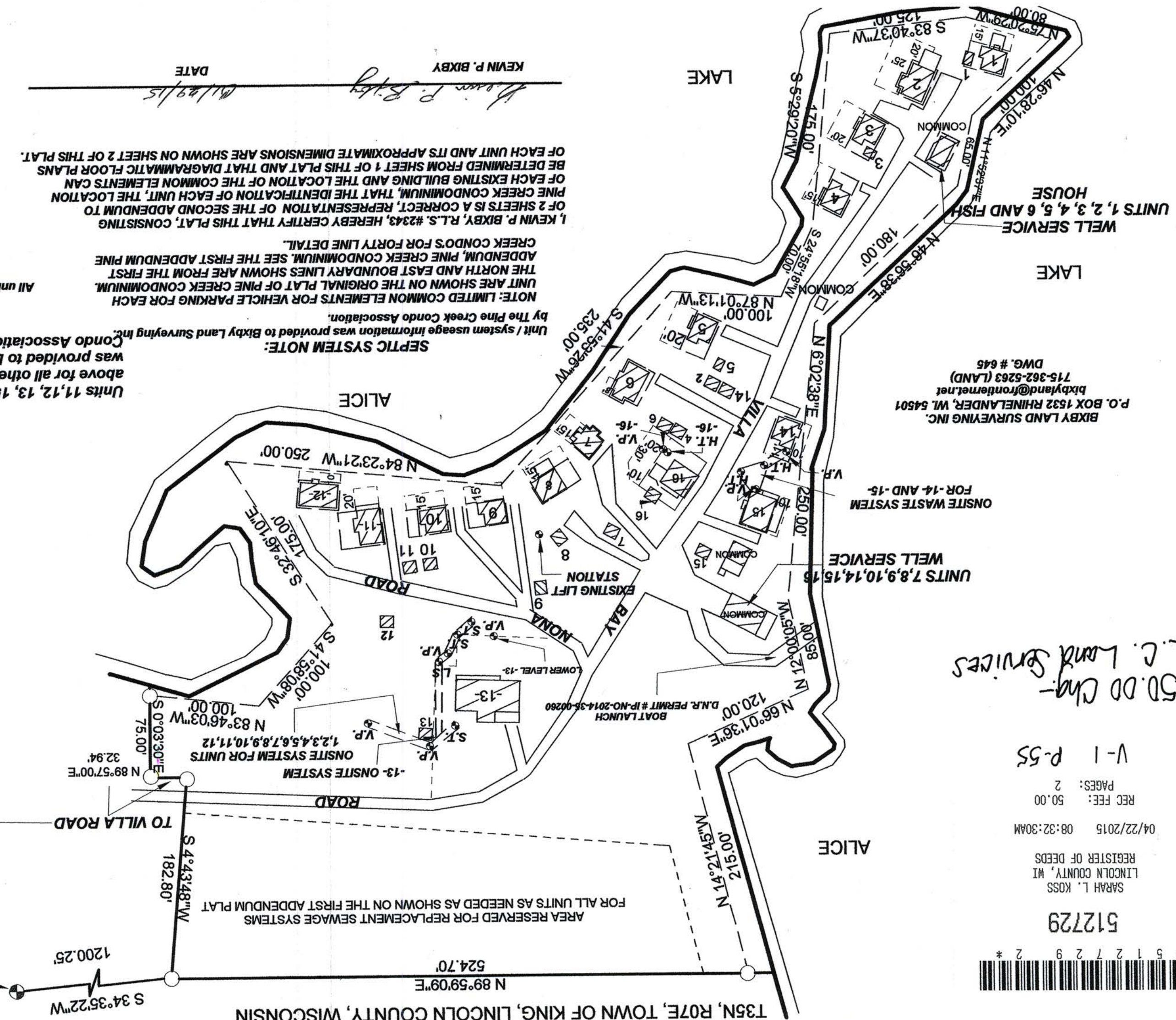
RECEIVED BY LINCOLN COUNTY SURVEYOR THIS 23<sup>RD</sup> DAY OF APRIL 2015  
 OF *[Signature]*  
 COUNTY SURVEYOR

Ordinance by:

Approved for recording under terms of the Lincoln County Subdivision



SHEET 1 OF 2 SHEET



**STORAGE SHED NOTES**  
 All unit storage sheds to be 10' x 12' except for units 1, 3, and 5

**WELL NOTES**  
 Units 11, 12, 13, 15 and 16 have their own well locations. See the above for all other unit well locations. Unit / well usage information was provided to Bixby Land Surveying Inc. by The Pine Creek Condo Association.

- 1" IRON PIPE PER PINE CREEK CONDO.
- ⊕ 1.75" IRON PIPE PER THE FIRST ADDENDUM PINE CREEK CONDO'S DATED 06/23/08
- L.S. = LIFT STATION
- S.T. = SEPTIC TANK
- V.P. = VENT PIPE
- H.T. = HOLDING TANK

**LEGEND**

AREA RESERVED FOR REPLACEMENT SEWAGE SYSTEMS FOR ALL UNITS AS SHOWN ON THE FIRST ADDENDUM PLAT

I, KEVIN P. BIXBY, R.L.S. #2343, HEREBY CERTIFY THAT THIS PLAT, CONSISTING OF 2 SHEETS IS A CORRECT REPRESENTATION OF THE SECOND ADDENDUM TO PINE CREEK CONDOMINIUM, THAT THE IDENTIFICATION OF EACH UNIT, THE LOCATION OF EACH EXISTING BUILDING AND THE LOCATION OF THE COMMON ELEMENTS CAN BE DETERMINED FROM SHEET 1 OF THIS PLAT AND THAT DIAGRAMMATIC FLOOR PLANS OF EACH UNIT AND ITS APPROXIMATE DIMENSIONS ARE SHOWN ON SHEET 2 OF THIS PLAT.

NOTE: LIMITED COMMON ELEMENTS FOR VEHICLE PARKING FOR EACH UNIT ARE SHOWN ON THE ORIGINAL PLAT OF PINE CREEK CONDOMINIUM. THE NORTH AND EAST BOUNDARY LINES SHOWN ARE FROM THE FIRST ADDENDUM, PINE CREEK CONDOMINIUM. SEE THE FIRST ADDENDUM PINE CREEK CONDO'S FOR FORTY LINE DETAIL.

**SEPTIC SYSTEM NOTE:**

Unit / system usage information was provided to Bixby Land Surveying Inc. by The Pine Creek Condo Association.

BIXBY LAND SURVEYING INC.  
 P.O. BOX 1532 RHINELANDER, WI. 54501  
 bixbyland@frontiernet.net  
 715-362-5263 (LAND)  
 DWG. # 645

\$ 50.00 Chg.  
 L.C. Land Services

04/22/2015 08:32:30AM  
 REC FEE: 50.00  
 PAGES: 2  
 V-1 p-55

SARAH L. KOSS  
 LINCOLN COUNTY, WI  
 REGISTER OF DEEDS

512729



ALH7W

KEVIN P. BIXBY  
 DATE 4/14/15