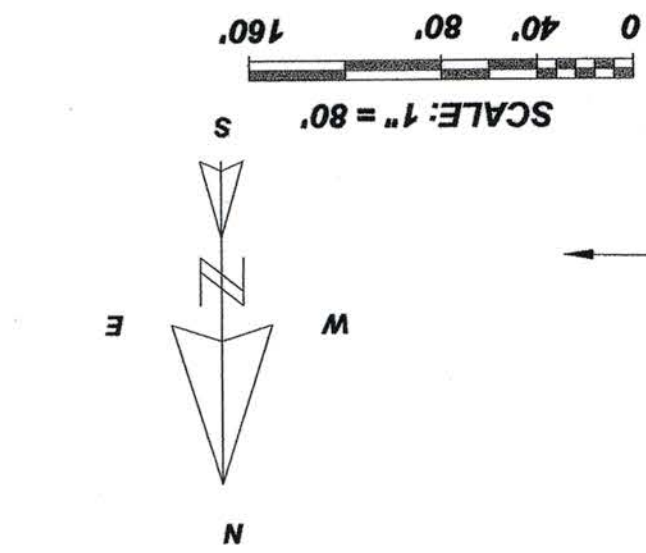


# SECOND ADDENDUM TO PINE CREEK CONDOMINIUMS

LOCATED IN THE NE 1/4 - NE 1/4, SE 1/4 - NE 1/4, SW 1/4 - NE 1/4, SECTION 28, T35N, R07E, TOWN OF KING, LINCOLN COUNTY, WISCONSIN

NORTHEAST CORNER SECTION 28

BEARINGS REF. TO THE FIRST ADDENDUM PINE CREEK CONDOS.



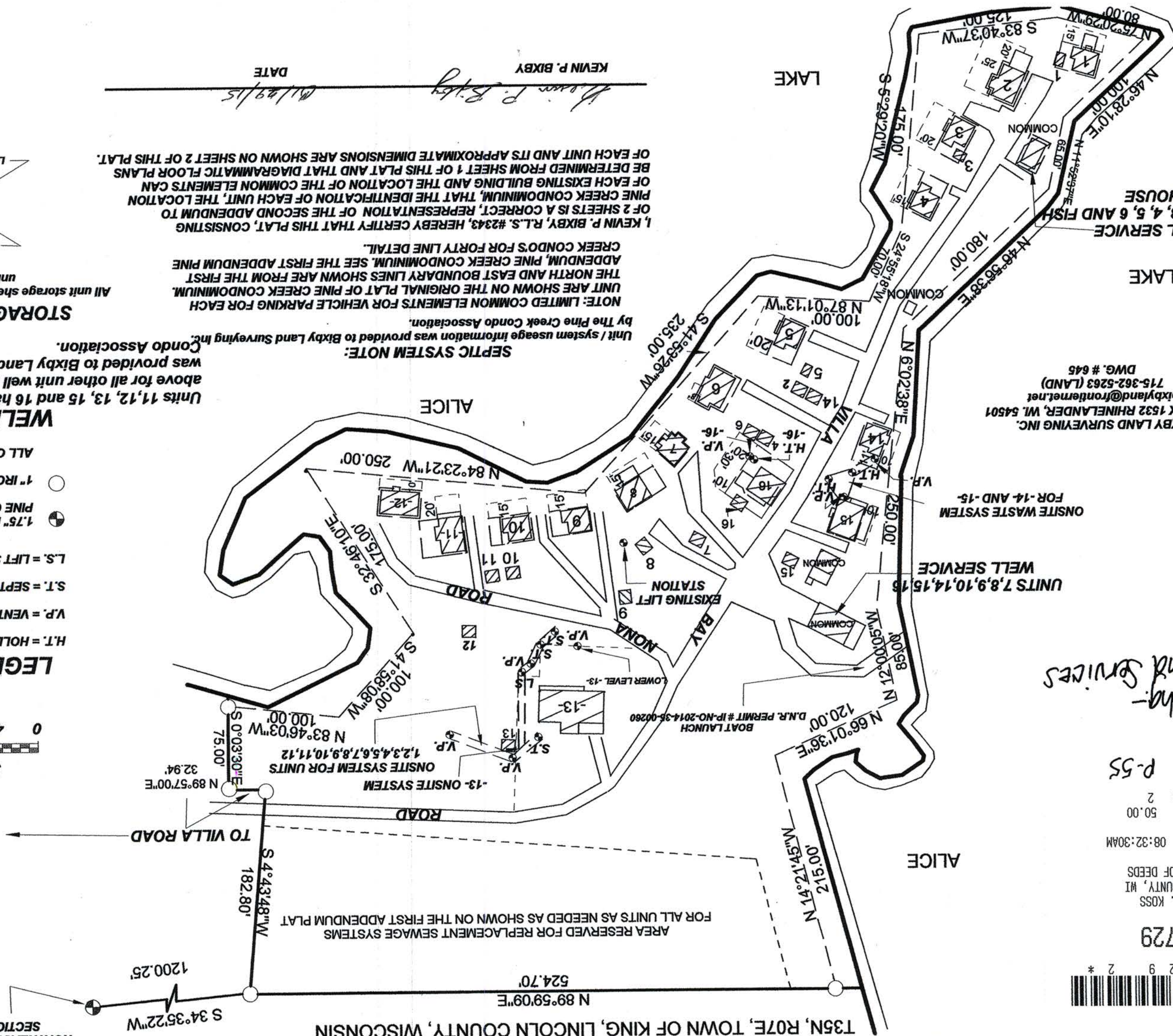
RECEIVED BY LINCOLN COUNTY SURVEYOR THIS 23<sup>RD</sup> DAY OF APRIL 2015  
 OF *[Signature]*  
 COUNTY SURVEYOR

Ordinance by:

Approved for recording under terms of the Lincoln County Subdivision



SHEET 1 OF 2 SHEET



512729

SARAH L. KOSS  
 LINCOLN COUNTY, WI  
 REGISTER OF DEEDS

04/22/2015 08:32:30AM

REC FEE: 50.00

PAGES: 2

V-1 p-55

\$ 50.00 Chg.  
 L.C. Land Services

BIXBY LAND SURVEYING INC.  
 P.O. BOX 1532 RHINELANDER, WI. 54501  
 bixbyland@frontiernet.net  
 715-362-5263 (LAND)  
 DWG. # 645

AL479W

I, KEVIN P. BIXBY, R.L.S. #2343, HEREBY CERTIFY THAT THIS PLAN, CONSISTING OF 2 SHEETS IS A CORRECT REPRESENTATION OF THE SECOND ADDENDUM TO PINE CREEK CONDOMINIUM, THAT THE IDENTIFICATION OF EACH UNIT, THE LOCATION OF EACH EXISTING BUILDING AND THE LOCATION OF THE COMMON ELEMENTS CAN BE DETERMINED FROM SHEET 1 OF THIS PLAN AND THAT DIAGRAMMATIC FLOOR PLANS OF EACH UNIT AND ITS APPROXIMATE DIMENSIONS ARE SHOWN ON SHEET 2 OF THIS PLAN.

NOTE: LIMITED COMMON ELEMENTS FOR VEHICLE PARKING FOR EACH UNIT ARE SHOWN ON THE ORIGINAL PLAN OF PINE CREEK CONDOMINIUM. THE NORTH AND EAST BOUNDARY LINES SHOWN ARE FROM THE FIRST ADDENDUM, PINE CREEK CONDOMINIUM. SEE THE FIRST ADDENDUM PINE CREEK CONDOS FOR FORTY LINE DETAIL.

### SEPTIC SYSTEM NOTE:

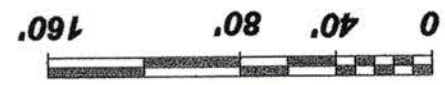
Unit / system usage information was provided to Bixby Land Surveying Inc. Condo Association.

Units 11, 12, 13, 15 and 16 have their own well locations. See the above for all other unit well locations. Unit / well usage information was provided to Bixby Land Surveying Inc. by The Pine Creek Condo Association.

### WELL NOTES

- 1" IRON PIPE PER PINE CREEK CONDO.
- ⊕ 1.75" IRON PIPE PER THE FIRST ADDENDUM PINE CREEK CONDOS DATED 06/23/08
- L.S. = LIFT STATION
- S.T. = SEPTIC TANK
- V.P. = VENT PIPE
- H.T. = HOLDING TANK

SCALE: 1" = 80'

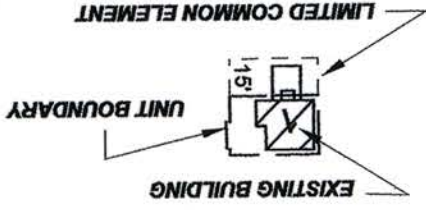


### LEGEND

- ALL OTHER POINTS = CALCULATED POSITION

### STORAGE SHED NOTES

All unit storage sheds to be 10' x 12' except for units 1, 3, and 5



KEVIN P. BIXBY

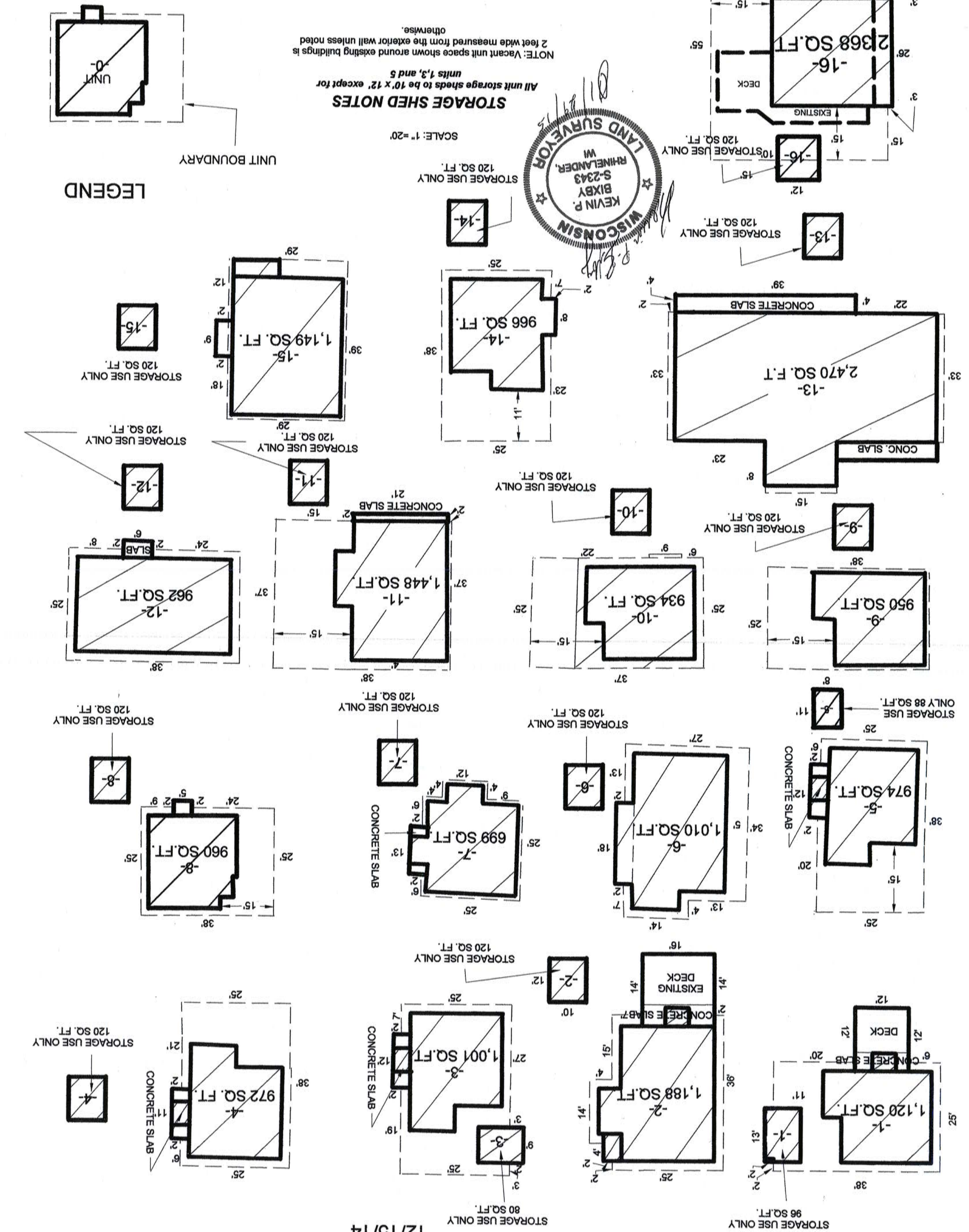
DATE 4/14/15

# SECOND ADDENDUM TO PINE CREEK CONDOMINIUMS

LOCATED IN THE NE 1/4 - NE 1/4, SE 1/4 - NE 1/4 AND THE SW 1/4 - NE 1/4, SECTION 28, T35N, R07E, TOWN OF KING, LINCOLN COUNTY, WISCONSIN

12/15/14

Doc # S12729



**BIXBY LAND SURVEYING INC.**  
 P.O. BOX 1532 RHINELANDER, WI. 54501  
 bixbyland@frontier.net  
 715-362-5263 (LAND)  
 DWG. # 645

RECEIVED BY LINCOLN COUNTY SURVEYOR THIS 23<sup>RD</sup> DAY OF April 20 15  
 COUNTY SURVEYOR

M647B