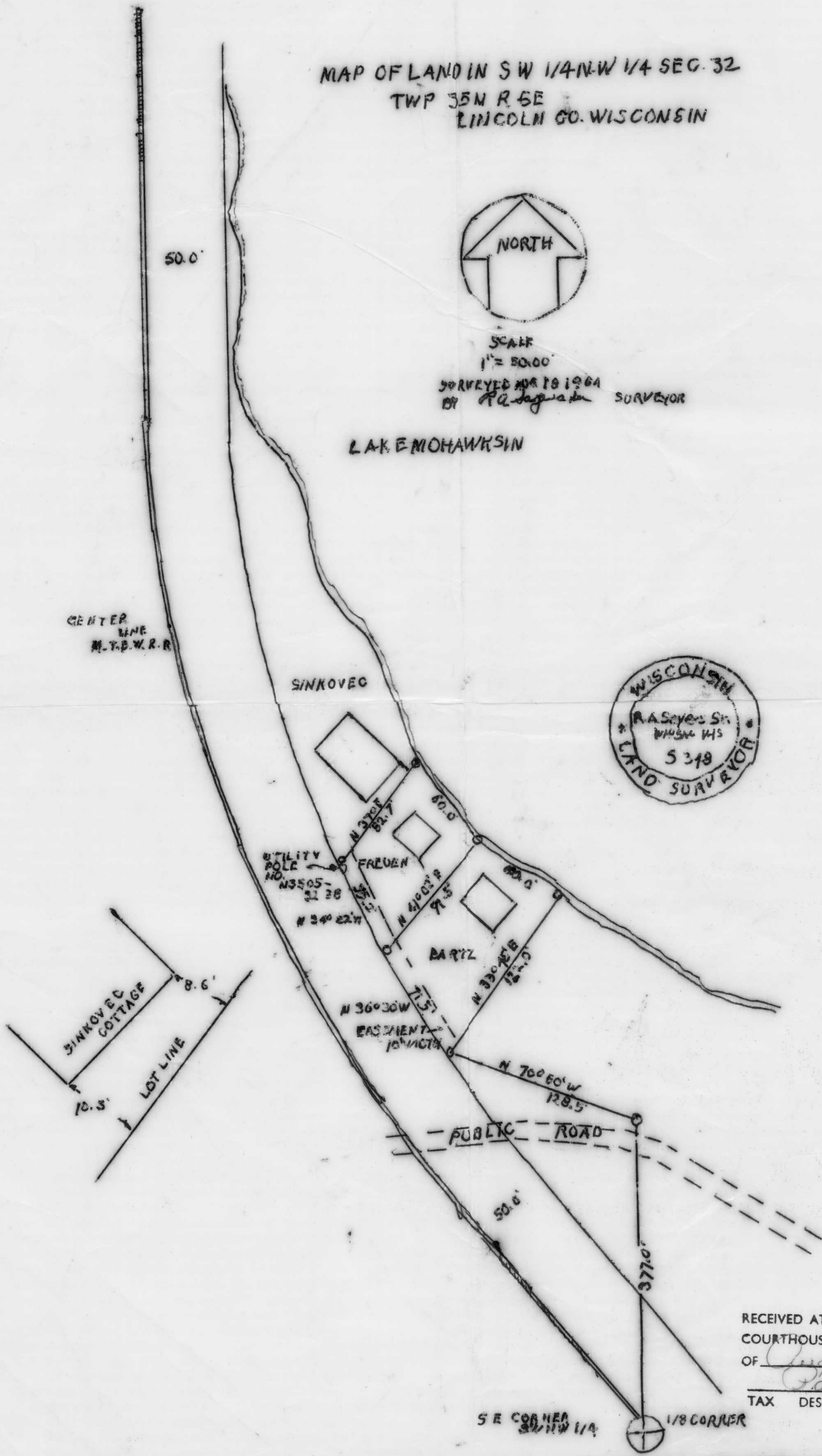


MAP OF LAND IN SW 1/4 NW 1/4 SEC. 32
 TWP 35N R 5E
 LINCOLN CO. WISCONSIN



SCALE
 1" = 50.00'
 SURVEYED APR 19 1964
 BY R. Q. JAGGARD SURVEYOR

LAK E MOHAWKSIN



RECEIVED AT LINCOLN COUNTY
 COURTHOUSE THIS 25th DAY
 OF August 19 76.
 Tax Description Office

A
MG:3