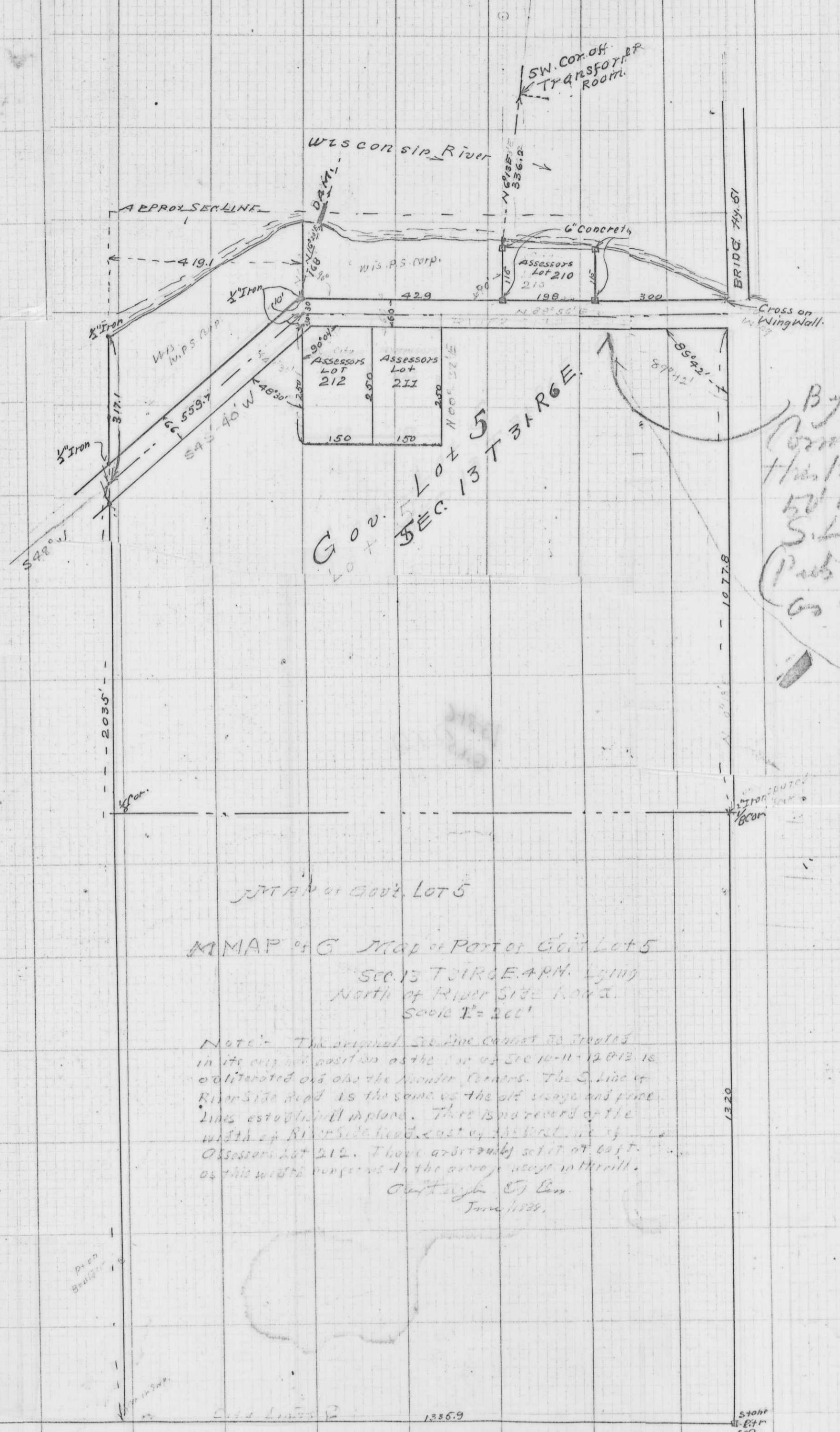


1133
241
125
325.5

976
24.84
55.85

111
270
17
11
323
ON 100% REC. PAPER MADE IN U.S.A.

B



By resolution of Council Nov 7/39 this Road was made 50 wide From the S. Line as shown. (Puts the N. Side from as shown on drawing)

By resolution of Council Nov 7, 39 this Road Right of way was made 50 feet wide, starting at the south line as shown on drawing. This puts the North Right of Way line 10' south from where it is shown on the drawing.

Received from
City Engineer Office
6-28-76

MAP of Govt. Lot 5
MMAP of G. Map of Part of Govt Lot 5
SEC. 13 T. 31 R. 6 E. ARK. lying
North of River Side Road.
Scale 1" = 200'

Note: The original S. line cannot be located in its original position as the S. of Sec 10-11-12 & 13 is obliterated and also the boundary corners. The S. line of River Side Road is the same as the old usage and price lines established in place. There is no record of the width of River Side Road east of the S. line of Assessors Lot 212. I have arbitrarily set it at east as this width appears to be correct, except within all.
C. D. [Name]
June 1976.

G.L. 5 13-31-6
(NE NW)

SEC 14
SEC 13