



All bearings are referenced to the East line of the NE 1/4 of Section 8 as bearing S02°33'26"E on the Lincoln County Coordinate System.

ONEIDA COUNTY  
SECTION 32, T.36N., R.5E.

# Plat of Survey

Section 5 and 8, T.35N., R.5E.,  
Town of Wilson, Lincoln  
County, Wisconsin

**Notes:**

1. Found the Lincoln County Bertsen Monument set by Don Frisque, RLS No. S-1218, but knew the Southwest Corner position he used to prorate in this corner was not correct and discovered that he had made an error in the proration calculations, as I had done the original corner search, control survey and corner re-establishment while working for Becher Hoppe Associates in 1999. After meeting with the current Surveyor and the President of Becher Hoppe Associates, it was confirmed that the corner was not in the correct position.
2. Found the Lincoln County Bertsen Monument set in May of 2007 by Kevin Bixby, RLS No. S-2343, from the work he did in the adjoining Section 6. Kevin had used the information by Donald Frisque, RLS No. S-1218, of Becher Hoppe Associates dated 2/23/2001 for the West 1/4 Corner of Section 5 to calculate the position of this corner by reverse proration. As I had done the original corner search, control survey and corner re-establishment while working for Becher Hoppe Associates in 1999, I knew this corner position was not set correctly. After searching through Becher Hoppe's files and analyzing the data and CAD files it was confirmed the NW corner position was calculated incorrectly and an error in the proration to set the West 1/4 corner of Section 5 was made. After meeting with the Surveyor and President of Becher Hoppe Associates, it was confirmed that the corner was not in the correct position. I re-established the corner position, by obliterated means, at the position from found monuments and witnesses by Francis Fox in Section 8 as shown on the drawing hereon.
3. I found the Lincoln County Bertsen Monument set by Donald Frisque, RLS No. S-1218, but it was staked in the wrong position and the Northwest Corner of Section 8, that was used to determine this corner, also was in error. (NOTE: See the U.S. Public Land Survey Monument Record for the Northwest Corner of Section 8 for more details as this corner was revised) Reestablished the corner equidistant from the NW and NE Section corners and on the existing E-W fence line for the North-South location.

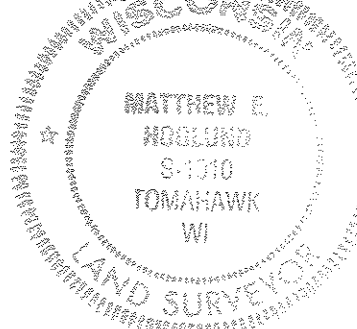
**Legend**

- ▲ Found P.K. Nail
- Found 1-1/4" Iron Pipe (Unless otherwise noted)
- Found 3/4" Iron Rebar (Unless otherwise noted)
- Set 7/8" x 30" Iron Rebar Weighing 2.04 lbs./lin ft.
- ⊕ Reset Lincoln County Bertsen Monument
- ⊕ Found Lincoln County Bertsen Monument (Unless otherwise noted)
- Lincoln County Monument which was found and that has now been moved or replaced this survey.
- Found 6" by 6" Granite Stone
- Found 4" by 4" Concrete Benchmark with steel cap
- (46.57) Measurements made by Becher-Hoppe Associates under the supervision of Matthew E. Hoglund in 1999
- [46.57] Record Dimensions per partial section summary by Donald Frisque filed in the Lincoln County Land Information Office on October 25, 2001.
- <46.57> Record Dimensions per Plot of Survey by Feltz and Associates, Inc. dated August 29, 2001 - Lincoln County Land Information Office Map Number L318A
- [46.57] Record Dimensions per Plot of Survey by Kevin Bixby dated May 1, 2007 - Lincoln County Land Information Office Map Number L441A.

**SURVEYOR'S CERTIFICATE**

I hereby certify, to the best of my knowledge and belief, that I have surveyed the property shown hereon; that this map represents an accurate survey of said property and that I have complied with the applicable requirements of Wisconsin Administrative Code Chapter A-E 7.

Dated this: 19<sup>th</sup> day of November 2008  
*Matthew E. Hoglund*  
Nicolet Surveyors, Inc.  
By: Matthew E. Hoglund  
R.L.S. S-1910



© 2008 NICOLET SURVEYORS, INC.

**Plat of Survey**

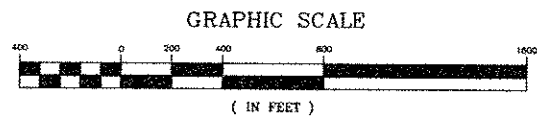
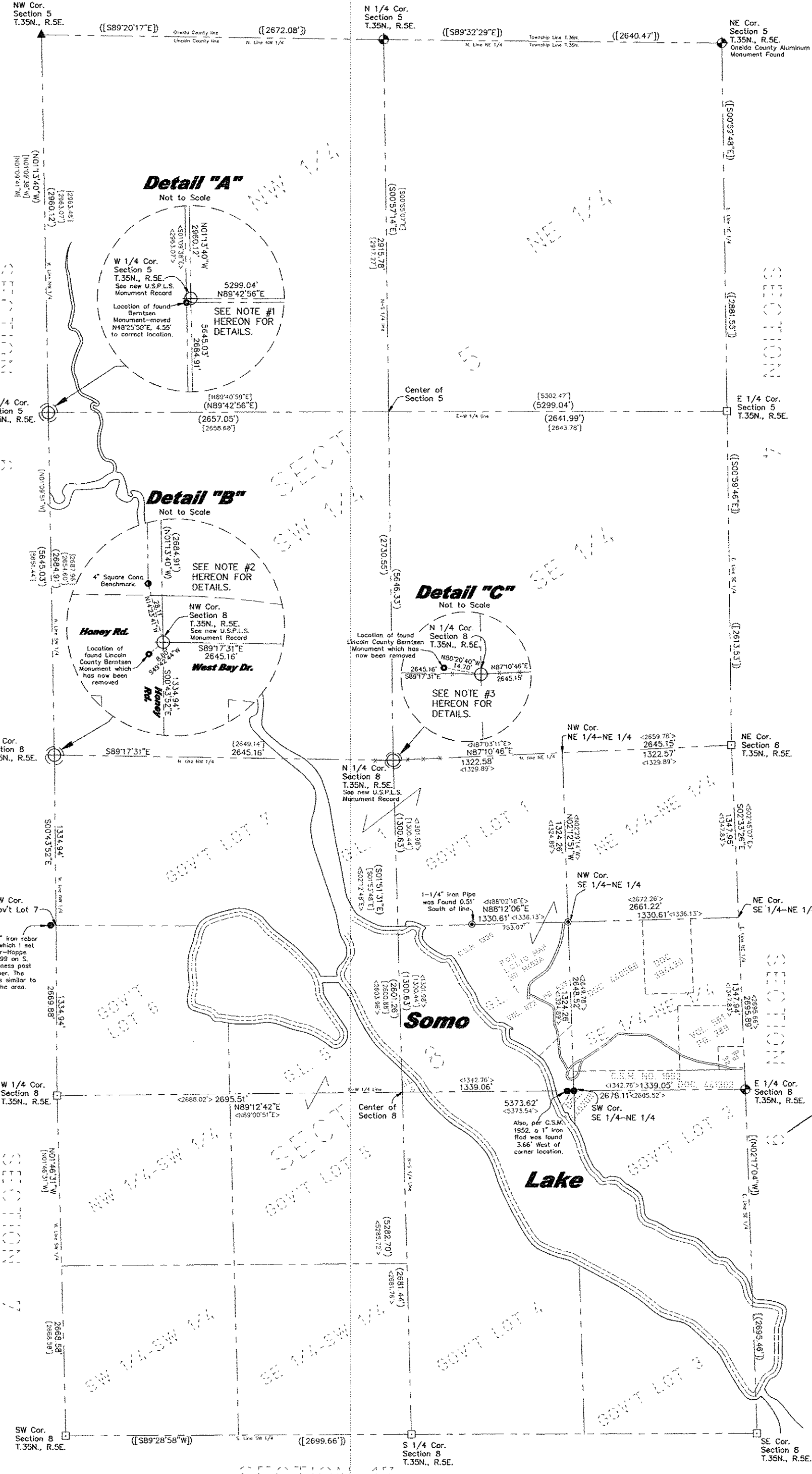
Section 5 and 8, T.35N., R.5E., Town of Wilson, Lincoln County, Wisconsin

www.nicoletsurveyors.com

**NICOLET SURVEYORS, INC.**  
56 S. BROWN STREET, RHINELANDER, WI 54501  
715-362-2808

Drawn By: JMO Date: November 19, 2008 Client: Bob Zellow  
Checked By: MDH Scale: As shown Project # 766  
R.S. 40 & 41

P.O.S. DATED 5/17/2007 L.L.O.L.L.O. MAP NO. L441A



M583B