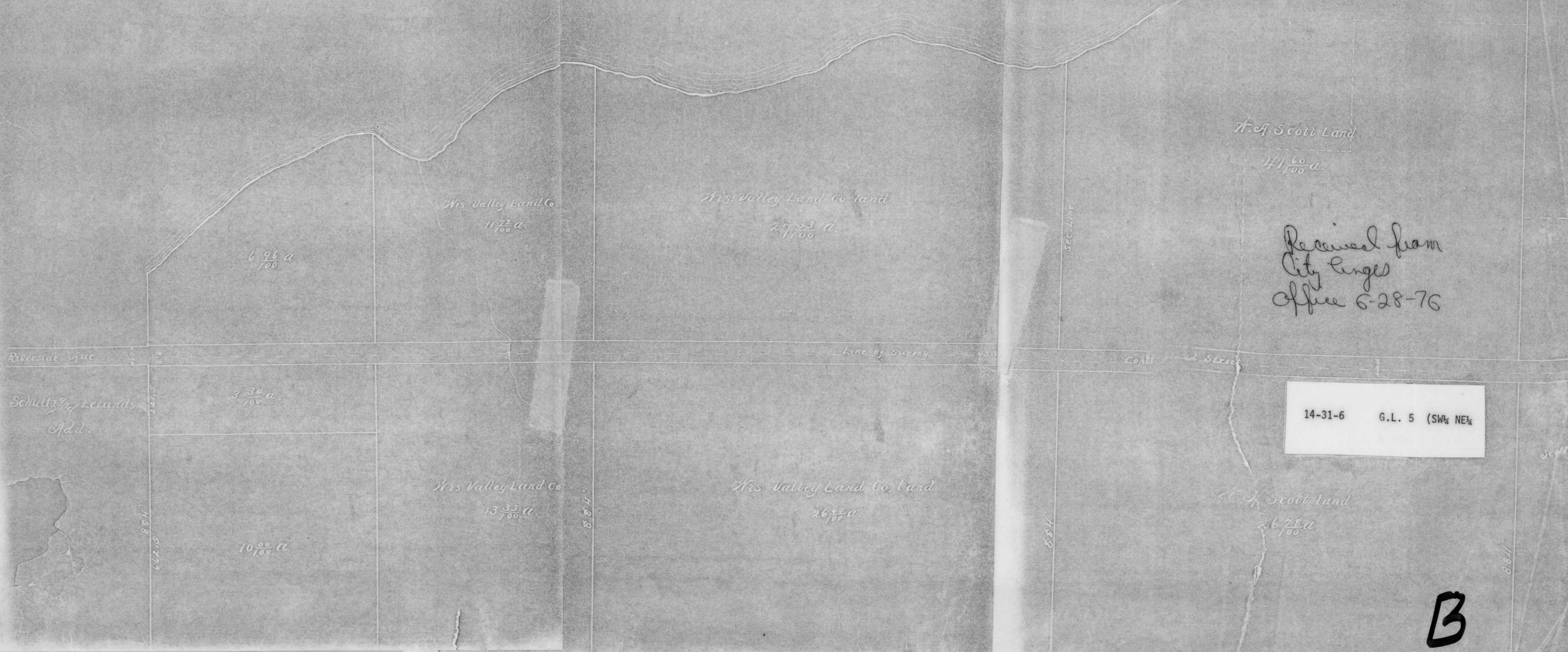


PLAN SHOWING PROPOSED EXTENSION
 OF
 RIVERSIDE AVENUE
 IN
 CITY OF MERRILL

Scale 1/2 inch = 100 feet

Wisconsin River



Received from
 City Engineer
 Office 6-28-76

14-31-6 G.L. 5 (SW 1/4 NE 1/4)

B