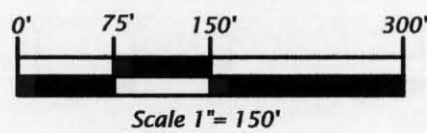


County Trunk Highway "O"

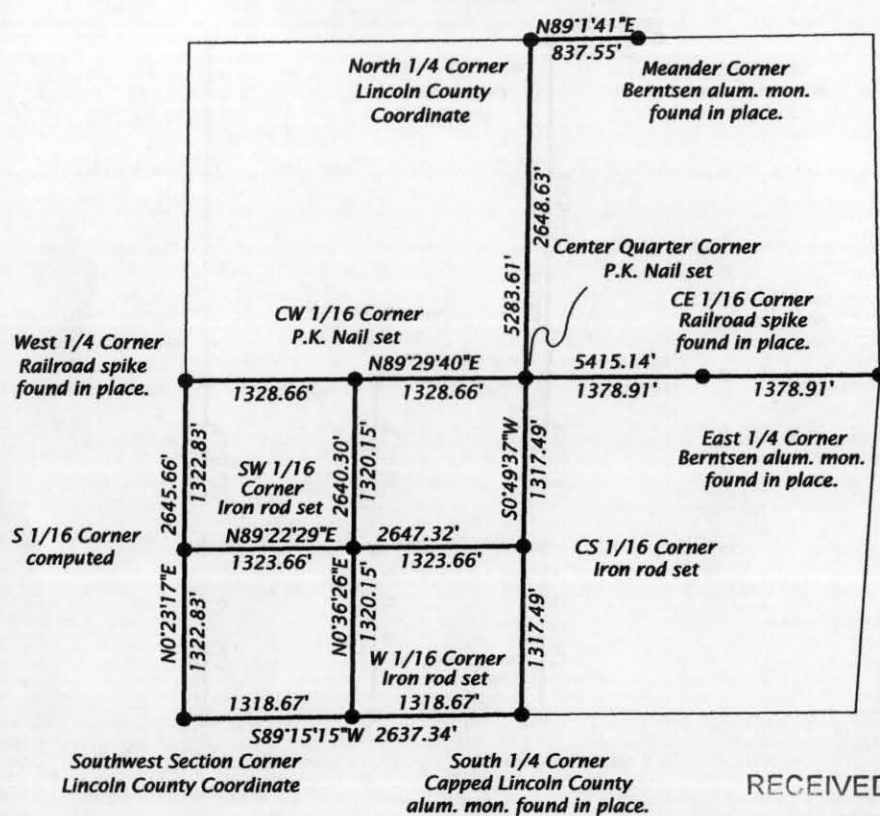
**PART OF THE
NE 1/4 OF THE SW 1/4
AND THE
SE 1/4 OF THE SW 1/4
SECTION 16, T34N, R6E
BRADLEY TOWNSHIP
LINCOLN COUNTY, WISCONSIN**

Bearings Lincoln County
Grid, based on GPS survey data.



- Legend**
- = Iron rod set, 0.6" dia. x 24" long.
 - = P.K. Nail set.
 - () = Dimensions of record.
 - Iron pipe sizes are outside diameter dimension.
 - Other corner monuments are as noted.

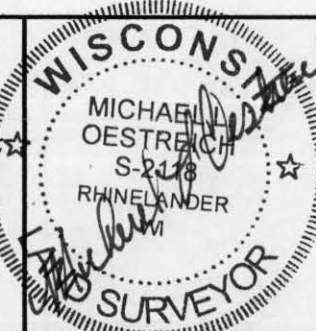
**SECTION 16 T34N, R6E
SCALE 1" = 1500'**



RECEIVED BY LINCOLN COUNTY
SURVEYOR THIS 20TH DAY
OF November 20 06
Tony Dell
COUNTY SURVEYOR

SURVEYOR'S CERTIFICATE

I, Michael L. Oestreich, Registered Land Surveyor No. S-2118, hereby certify that I have surveyed the property shown hereon, that this map represents as accurate survey of said property to the best of my knowledge and belief; that I have performed this survey by order of Roger Sommi; and that I have complied with the requirements of Wisconsin Administrative Code A-E 7.
Date: 10/18/06



Oestreich Surveying & Mapping, LLC

5946 Forest Lane Rhinelander, WI 54501
Tel. (715) 362-5538 RLS2118@charter.net

File No. 16-346

Drafted by: M. Oestreich

Map No. 06-37

Sheet 1 of 1 sheet

NE 1/4 - SW 1/4

SE 1/4 - SW 1/4

Vol. 240, Pg. 187

Vol. 240, Pg. 189

Vol. 240, Pg. 191



CW 1/16 Corner
P.K. Nail set.

P.K. Nail set.

SW 1/16 Corner
Iron rod set, 0.6" dia. x 36" long.

CS 1/16 Corner
Iron rod set, 0.6" dia. x 36" long.
Note: 1.0" dia iron pipe
bears N86°W 46.2'

N0°36'26"E 1320.15'
1292.15'

1023.66' S89°22'29"W 1323.66'

1028.67' N89°29'40"E 1328.66'

1028.56' N89°29'40"E 1328.56'

300.00'

300.00'

300.00'

300.00'

300.00'

300.00'

300.00'

300.00'

300.00'

300.00'

300.00'

300.00'

300.00'

300.00'

300.00'

300.00'

300.00'

300.00'

300.00'

300.00'

300.00'

300.00'

300.00'

300.00'

300.00'

300.00'

300.00'

300.00'

300.00'

300.00'

300.00'

300.00'

300.00'

300.00'

300.00'

300.00'

300.00'

300.00'

300.00'

300.00'

300.00'

300.00'

300.00'

300.00'

300.00'

300.00'

300.00'

300.00'

300.00'

300.00'

300.00'

300.00'

300.00'

300.00'

300.00'

300.00'

300.00'

300.00'

300.00'

300.00'

300.00'

300.00'

300.00'

M532A