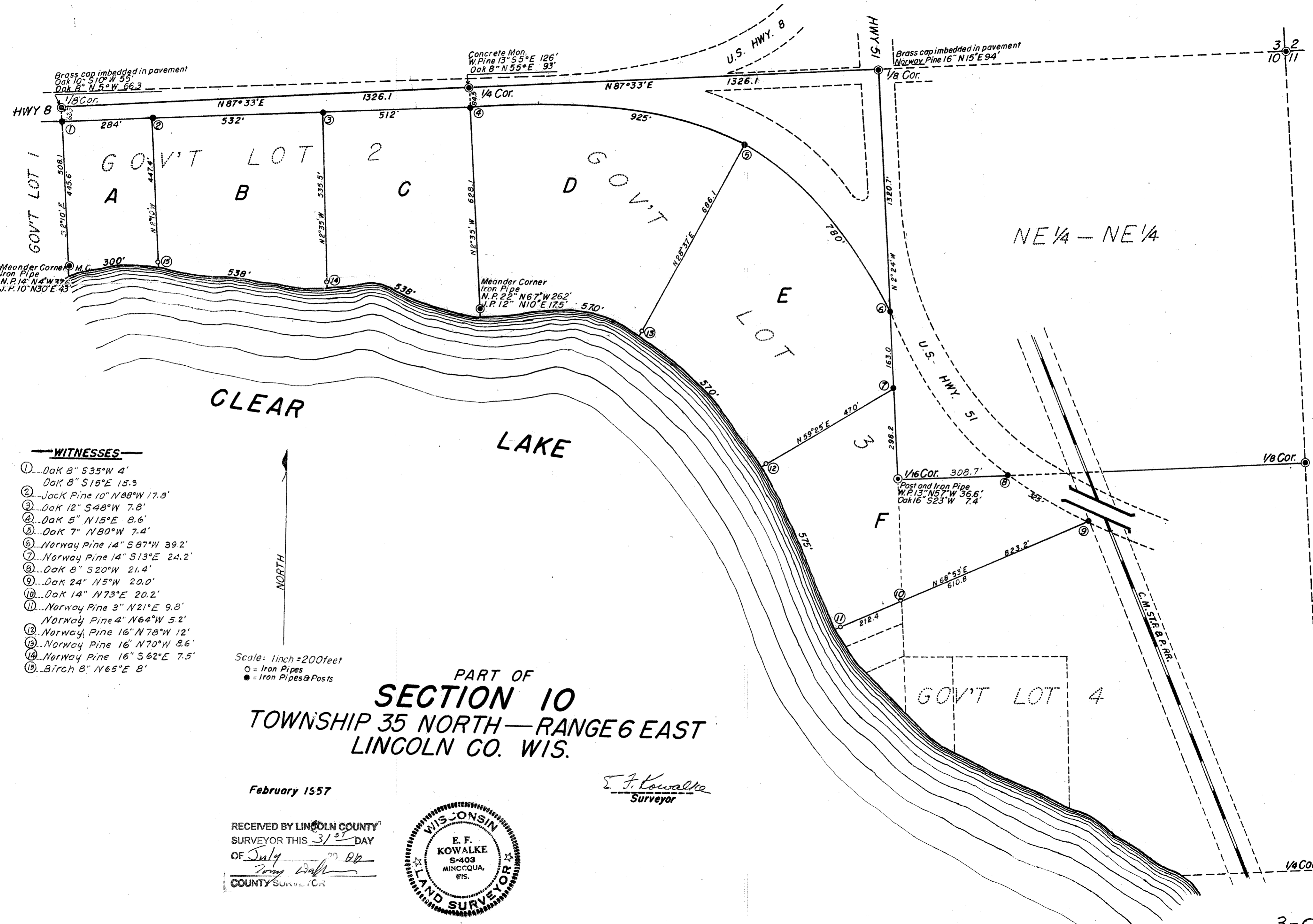


M525



**WITNESSES**

- ①...Oak 8" S35°W 4'
- Oak 8" S15°E 15.3
- ②...Jack Pine 10" N88°W 17.8'
- ③...Oak 12" S48°W 7.8'
- ④...Oak 5" N15°E 8.6'
- ⑤...Oak 7" N80°W 7.4'
- ⑥...Norway Pine 14" S87°W 39.2'
- ⑦...Norway Pine 14" S13°E 24.2'
- ⑧...Oak 8" S20°W 21.4'
- ⑨...Oak 24" N5°W 20.0'
- ⑩...Oak 14" N73°E 20.2'
- ⑪...Norway Pine 3" N21°E 9.8'
- Norway Pine 4" N64°W 5.2'
- ⑫...Norway Pine 16" N78°W 12'
- ⑬...Norway Pine 16" N70°W 8.6'
- ⑭...Norway Pine 16" S62°E 7.5'
- ⑮...Birch 8" N65°E 8'

Scale: 1inch=200feet  
 ○ = Iron Pipes  
 ● = Iron Pipes & Posts

PART OF  
**SECTION 10**  
 TOWNSHIP 35 NORTH—RANGE 6 EAST  
 LINCOLN CO. WIS.

February 13 57

*E. F. Kowalke*  
 Surveyor

RECEIVED BY LINCOLN COUNTY  
 SURVEYOR THIS 31<sup>st</sup> DAY  
 OF July 20 06  
*Tommy Daff*  
 COUNTY SURVEYOR

