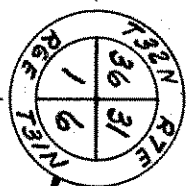


PART OF
NE 1/4 - NE 1/4
SECTION 1, T31N-R6E
LINCOLN COUNTY, WIS.

Robert J. Leach
 SURVEYOR S-584



33' 33' **TOWNSHIP** 200' **ROAD** 200' 100'

U.S. HIGHWAY "51"

NE 1/4 - NE 1/4

RECEIVED BY LINCOLN COUNTY
 SURVEYOR THIS 31ST DAY
 OF July 20 DL
Robert J. Leach
 COUNTY SURVEYOR

LOT 12 M524A

1/2 R FOUND IN PLACE 110.1'
 26° 18' W

1/2 R RESET ACCORDING TO
 SCHABBS ASSESSOR'S PLAT

50' 50'

1/2 R FOUND IN PLACE 430'
 ASSUMED EAST ON PLAT

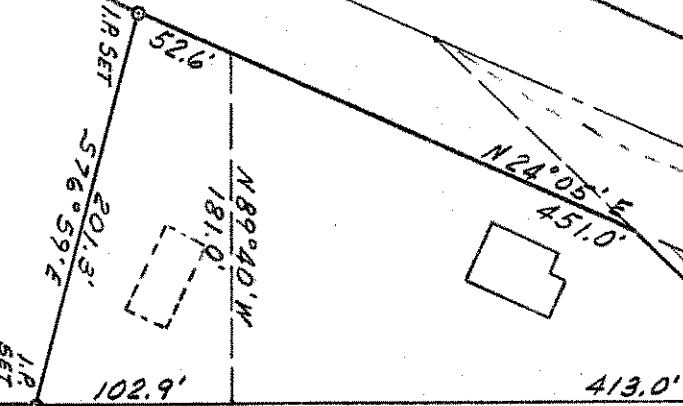
501.2' 587.54'E (ASSUMED EAST ON PLAT)

1/2 R FOUND IN PLACE 1/2 R 888'

ALVIN JORDAN
LOT 13 SCHABBS ASSESSOR'S PLAT

PRAIRIE RIVER

1374.0' 773.1' EAST LINE OF THE NE 1/4 - NE 1/4 SECTION 1, T31N-R6E 50° 20' W 413.0' 85.0'



SCALE: 1" = 100'
 JAN. 7, 1971