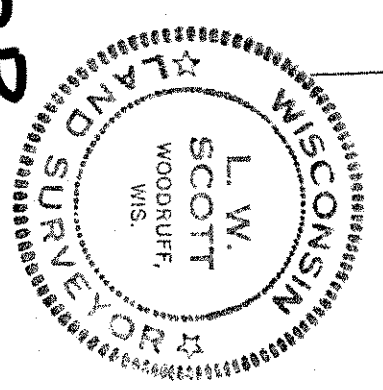


Assumed Bearings

Scale: 1/4 inch = 200 FT

SE 1/4 - SW 1/4 SECTION 7, T32N - R7E  
AND  
NE 1/4 - NW 1/4 SECTION 18, T32N - R7E  
LINCOLN COUNTY, WIS.

M523B



RECEIVED BY LINCOLN COUNTY SURVEYOR THIS 31<sup>ST</sup> DAY OF JULY 20 06  
County Surveyor

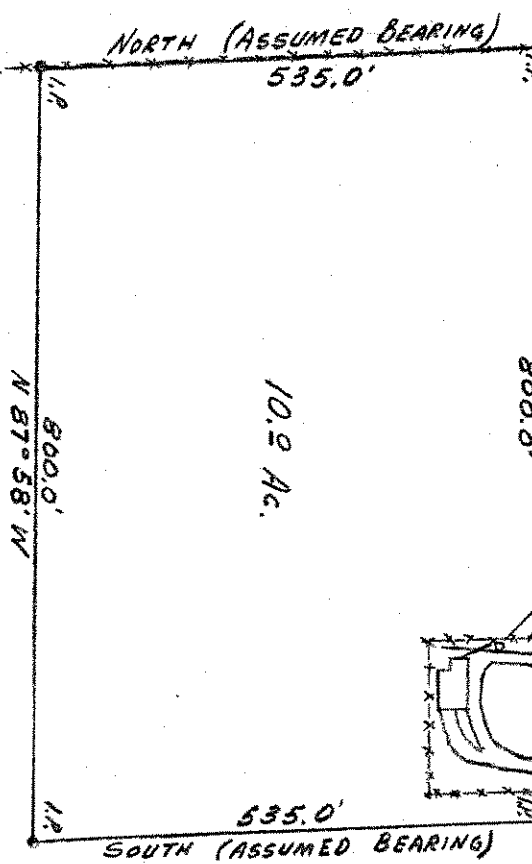
SECTION 18,

T32N - R7E

NE - NW

NW - NE

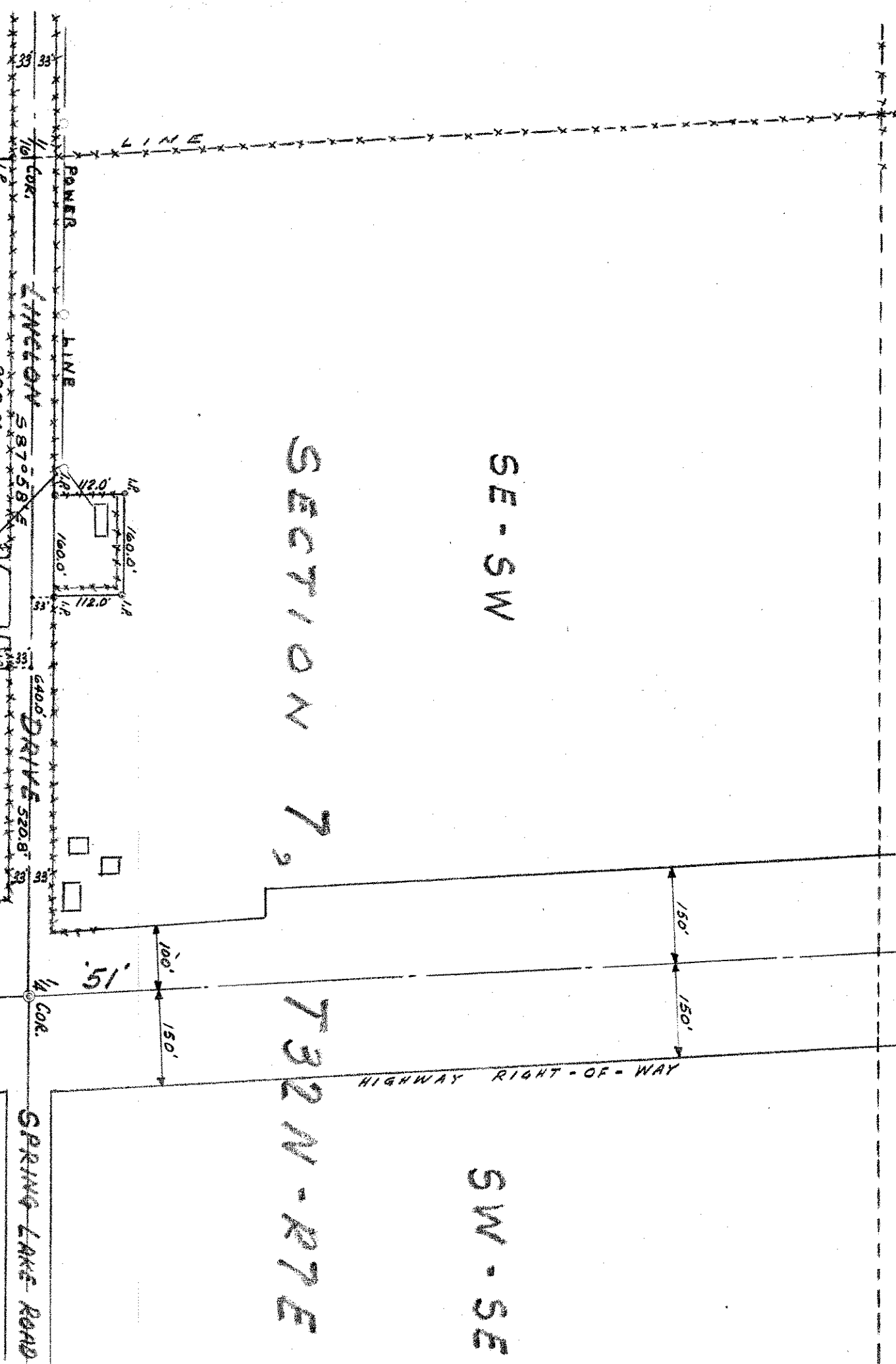
10.9 Ac.



HIGHWAY RIGHT-OF-WAY

U.S. HIGHWAY

HIGHWAY RIGHT-OF-WAY



SECTION 7,

T32N - R7E

SE - SW

SW - SE