

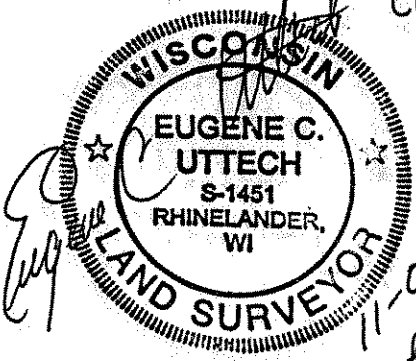
LANDS BEING PART OF THE SW1/4, SECTION 5, T35N, R6E,  
TOWN OF BRADLEY, LINCOLN COUNTY, WISCONSIN

OWNER: RAYMOND SERDYNSKI & HEIDI M. SERDYNSKI

THIS SURVEY REPRESENTS THAT LAND AS DESCRIBED  
IN DOCUMENT NO. 441620, RECORDED IN LINCOLN  
COUNTY REGISTER OF DEEDS

N1/4 CORNER  
S. 5-35-6

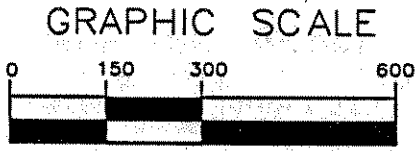
NW CORNER  
S. 5-35-6



11-04-05  
REVISED: 12/27/05

I, EUGENE C. UTTECH, REGISTERED  
LAND SURVEYOR OF THE STATE OF  
WISCONSIN DO HEREBY CERTIFY  
THIS IS TRUE AND CORRECT TO THE  
BEST OF MY KNOWLEDGE AND BELIEF.

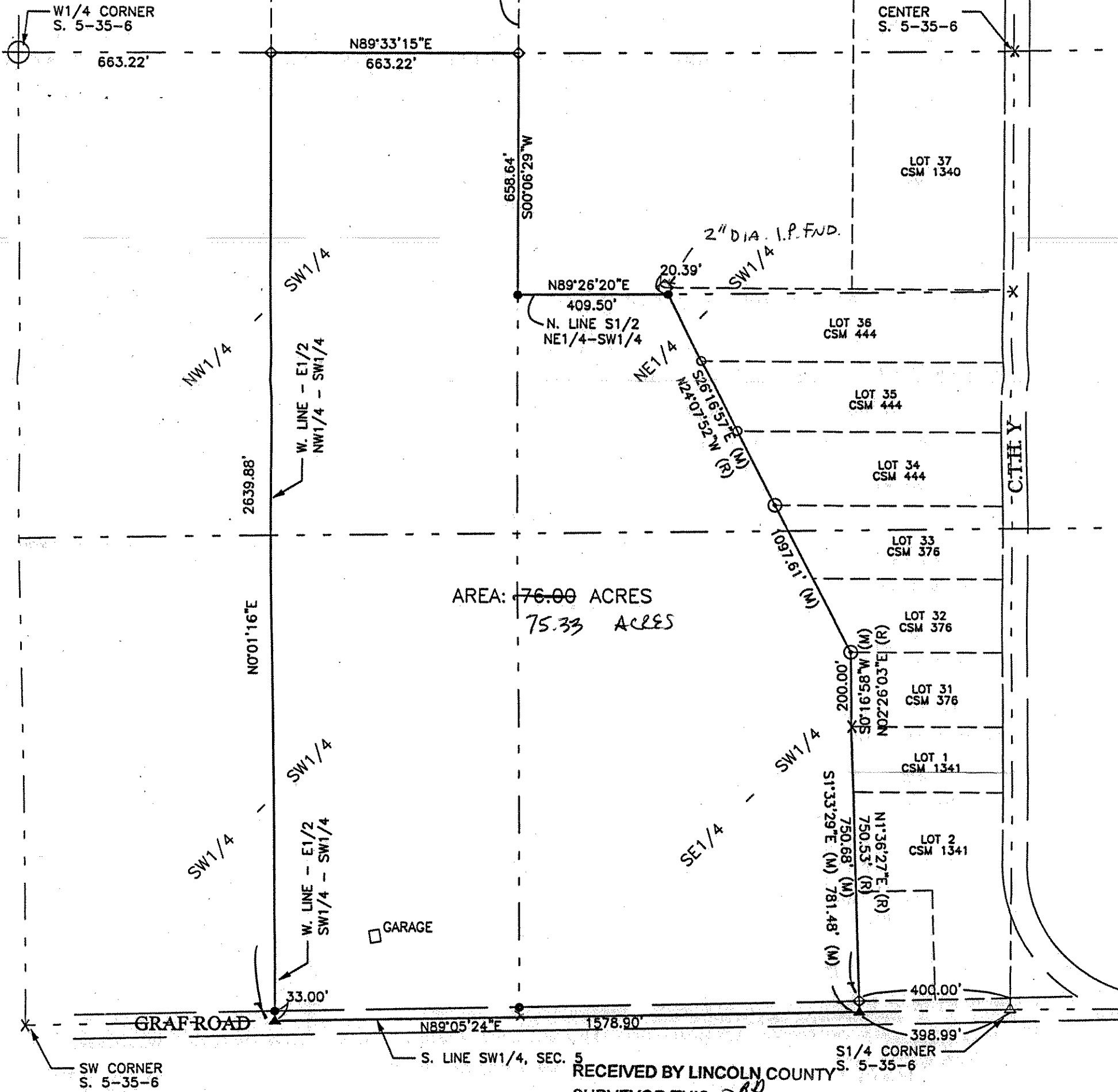
PLAT OF SURVEY BY  
LESTER SCHMIT  
DWG NO. 1282  
DATED: OCT. 23, 2002



BEARINGS ARE REFERENCED  
TO THE LINCOLN COUNTY  
COORDINATE SYSTEM

LEGEND

- 3/4" X 18" REBAR, SET
- ▲ PK NAIL, SET
- ◇ 1" DIA. IRON PIPE, FOUND
- ⊙ 1 1/4" IRON PIPE, FOUND
- △ PK NAIL, FOUND
- ⊕ CAST MONUMENT, FOUND
- X CALCULATED POSITION



AREA: 76.00 ACRES  
75.33 ACRES

RECEIVED BY LINCOLN COUNTY  
SURVEYOR THIS 3<sup>RD</sup> DAY  
OF January 2006  
*Tony Dault*  
COUNTY SURVEYOR

M512

690808 FILE NO.	BOUNDARY SURVEY	CADD BOUNDARY.DGN	P.L.S.	PROJECT NO. 980889	NO.	DATE	REVISION	BY
	BRADLEY, WISCONSIN PART OF THE SW1/4, SECTION 5, T35N, R6E	PLOT BOARDS	DRAWN BY: CAR	DATE: 10/13/05				
		PLOT STAGES	CHECKED BY:	SCALE AS SHOWN				

**MSA**  
PROFESSIONAL SERVICES

TRANSPORTATION • MUNICIPAL  
DEVELOPMENT • ENVIRONMENTAL  
1835 N. Stevens Street, Rhineland, WI 54501  
715-362-3244 1-800-844-7854 Fax: 715-362-4116  
© MSA PROFESSIONAL SERVICES

LOT NO. 1 E 1/2 - SW 1/4 - SW 1/4

FROM	DIRECTION	LENGTH	NORTHING	EASTING	TO
11	N 00 01 16.5 E	1319.942	253471.5255	370824.1295	11
17	N 89 19 22.2 E	661.254	254791.4671	370824.6192	17
18	S 00 06 29.0 W	1317.288	254799.2822	371485.8275	18
12	S 89 05 23.8 W	659.297	253481.9970	371483.3430	12
			253471.5255	370824.1295	11

AREA = 870549.297 SQ. FT. OR 19.9851 ACRES

LOT NO. 2 E 1/2 - NW 1/4 - SW 1/4

FROM	DIRECTION	LENGTH	NORTHING	EASTING	TO
17	N 00 01 16.5 E	1319.942	254791.4671	370824.6192	17
9	N 89 33 15.6 E	663.223	256111.4087	370825.1090	9
10	S 00 06 29.0 W	1317.288	256116.5674	371488.3119	10
18	S 89 19 22.2 W	661.254	254799.2822	371485.8275	18
			254791.4671	370824.6192	17

AREA = 873183.51 SQ. FT. OR 20.0455 ACRES

LOT NO. 3 REMAINING - NE 1/4 - SW 1/4

FROM	DIRECTION	LENGTH	NORTHING	EASTING	TO
18	N 00 06 29.0 E	658.644	254799.2822	371485.8275	18
79	N 89 26 19.5 E	409.497	255457.9248	371487.0697	79
421	S 26 16 56.7 E	729.384	255461.9360	371896.5472	421
16	S 89 19 22.2 W	733.739	254807.9540	372219.5155	16
			254799.2822	371485.8275	18

AREA = 376156.923 SQ. FT. OR 8.6354 ACRES

LOT NO. 4 REMAINING - SE 1/4 - SW 1/4

FROM	DIRECTION	LENGTH	NORTHING	EASTING	TO
12	N 00 06 29.0 E	1317.288	253481.9970	371483.3430	12
18	N 89 19 22.2 E	733.739	254799.2822	371485.8275	18
16	S 26 16 56.7 E	368.230	254807.9540	372219.5155	16
416	S 00 16 58.0 W	200.000	254477.7908	372382.5662	416
417	S 01 33 28.6 E	781.479	254277.7932	372381.5791	417
318	S 89 05 23.8 W	919.599	253496.6028	372402.8258	318
			253481.9970	371483.3430	12

AREA = 1161585.528 SQ. FT. OR 26.6663 ACRES

PREPARED BY: MSA PROFESSIONAL SERVICES.  
% EUGENE UTTECH 362.3244  
12/27/05

RECEIVED BY LINCOLN COUNTY  
SURVEYOR THIS 30 DAY  
OF JANUARY 2006  
COUNTY SURVEYOR

M215