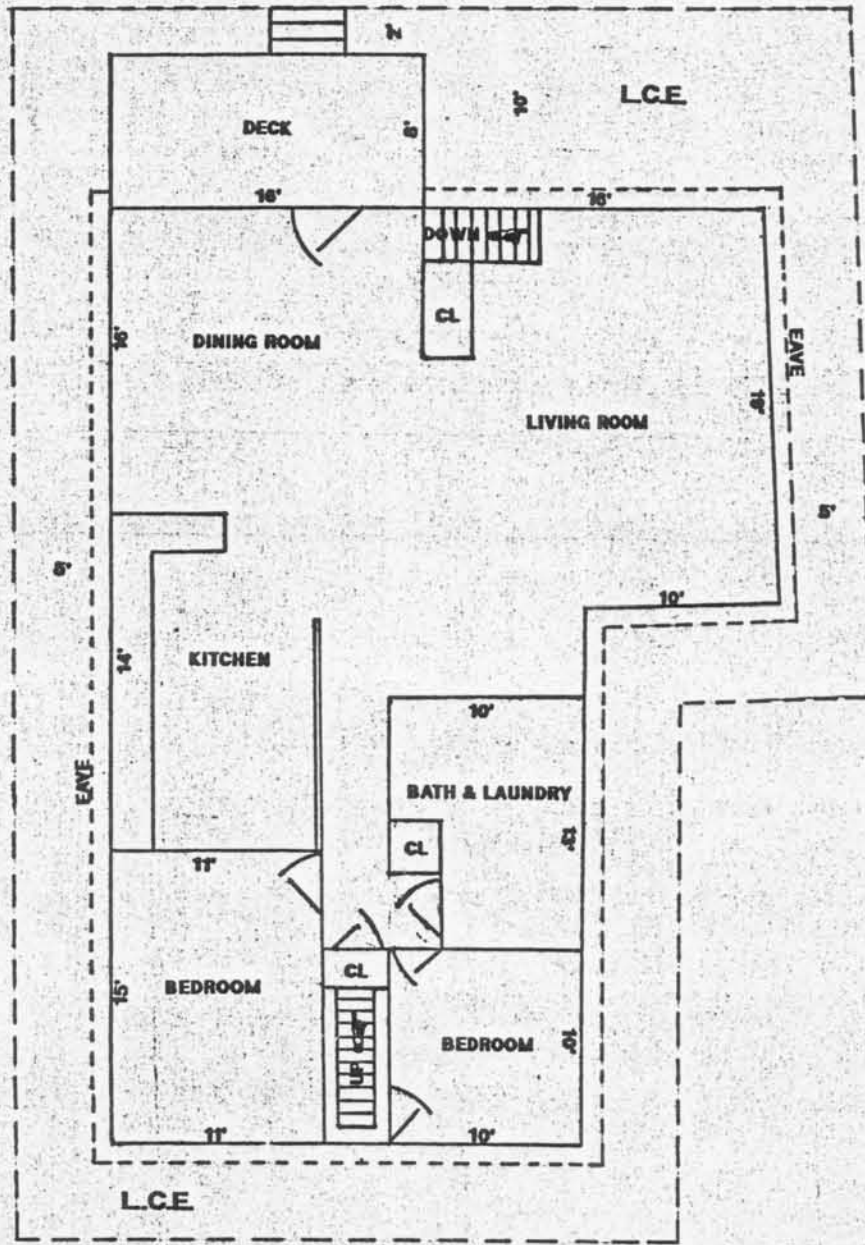


442164

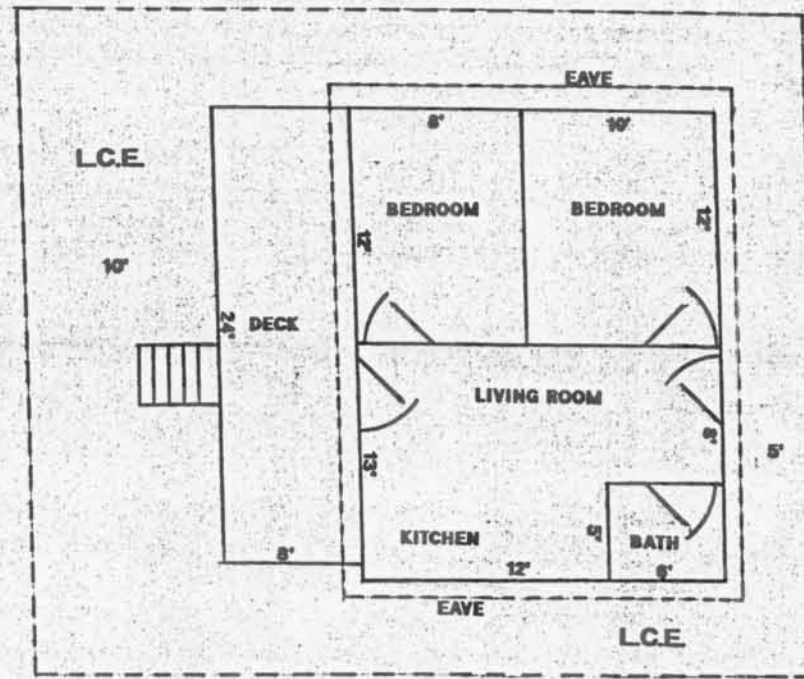
"HORSESHOE BEND CONDOMINIUM"

BEING PART OF
GOV'T LOT 8, SECTION 28, T35N, R7E,
TOWN OF KING, LINCOLN COUNTY, WISCONSIN

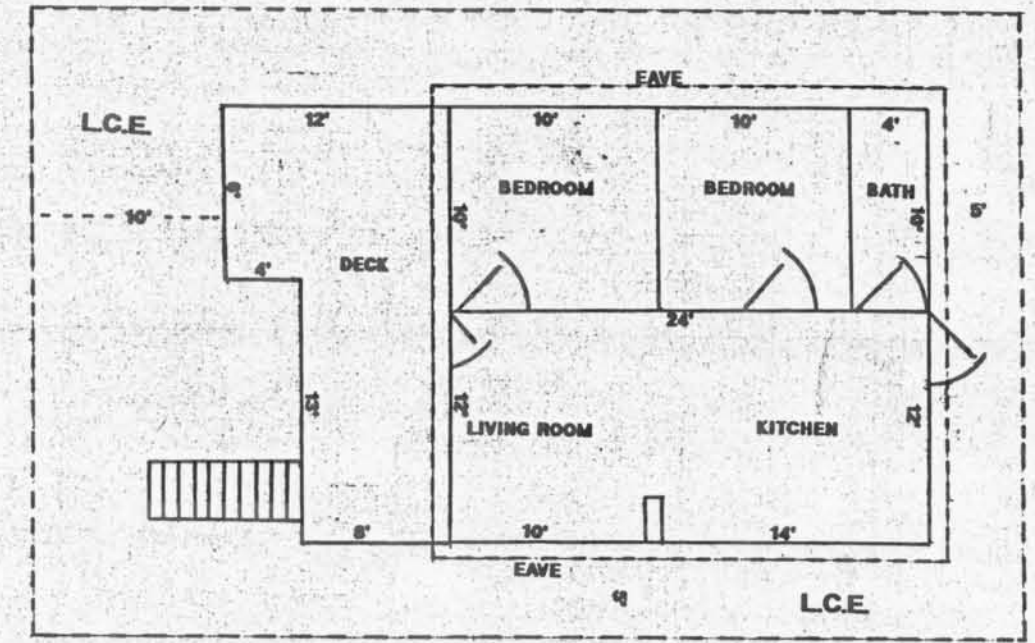
UNIT 1



UNIT 2

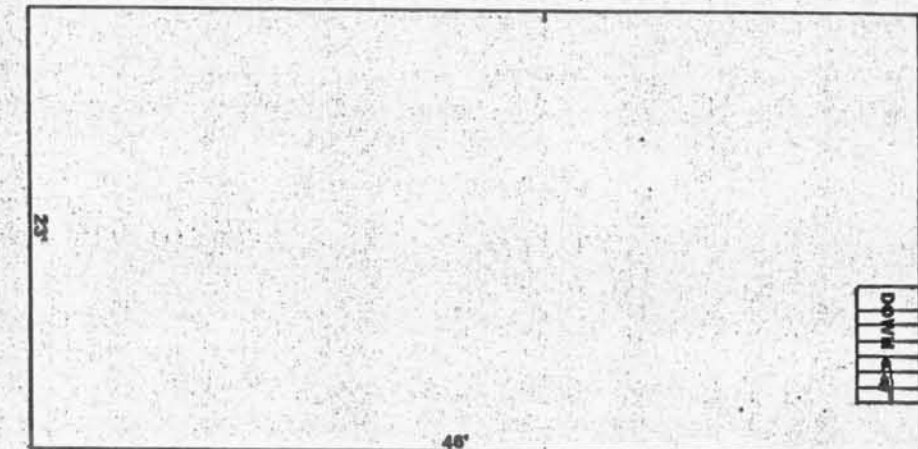


UNIT 3



M503B

UNIT 1 BASEMENT

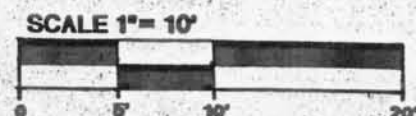


UNIT 1 UPPER LEVEL



RECEIVED BY LINCOLN COUNTY
SURVEYOR THIS 7TH DAY
OF June 20 05
Tom Delle
COUNTY SURVEYOR

FLOOR PLANS



SCALE 1" = 10'	PG. 2/2	DATE 03/16/05	DWN BY J.B.
DWG. NO. 10801-B	GENISOT & ASSOCIATES, INC. RHINELANDER, WISCONSIN		