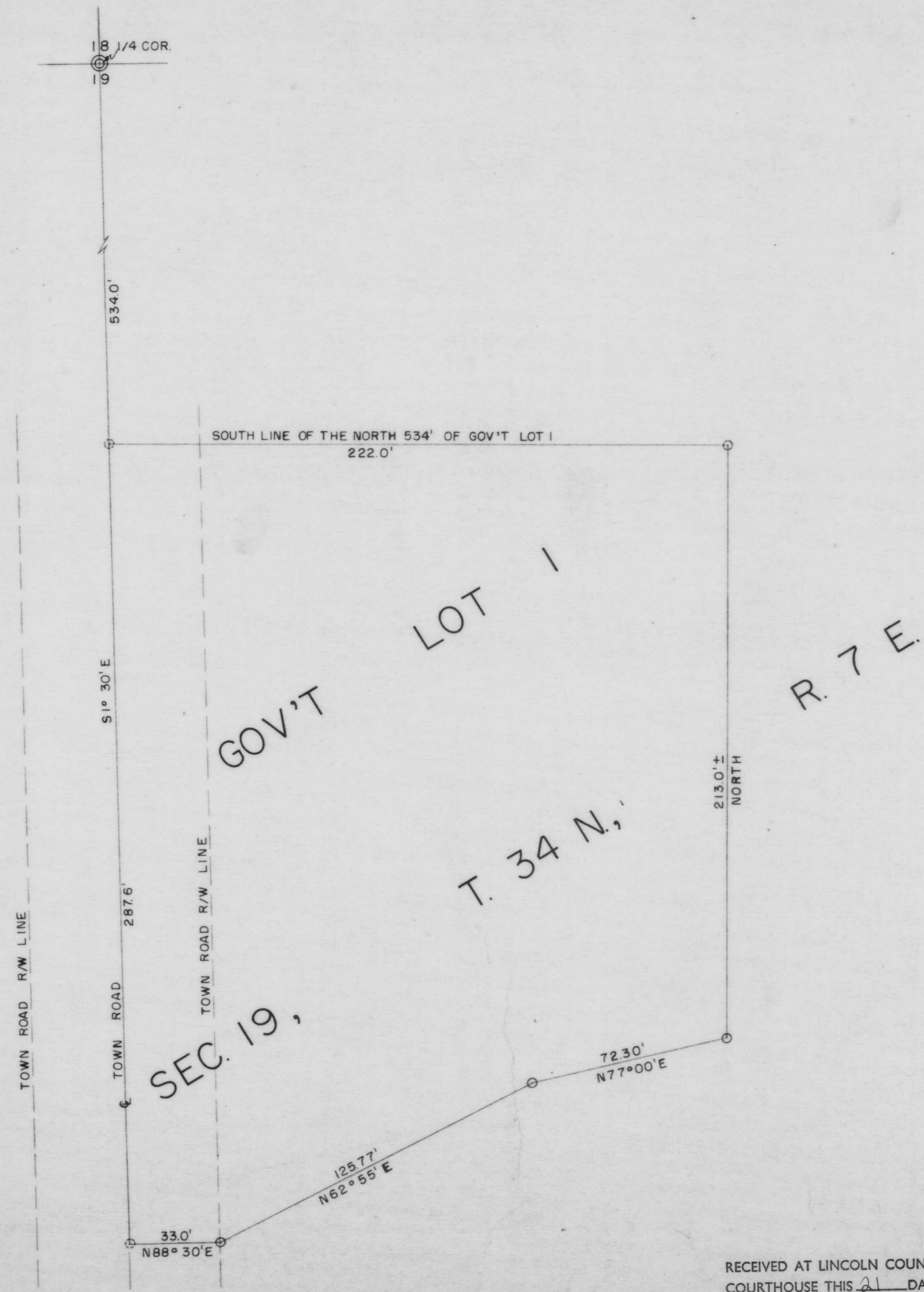
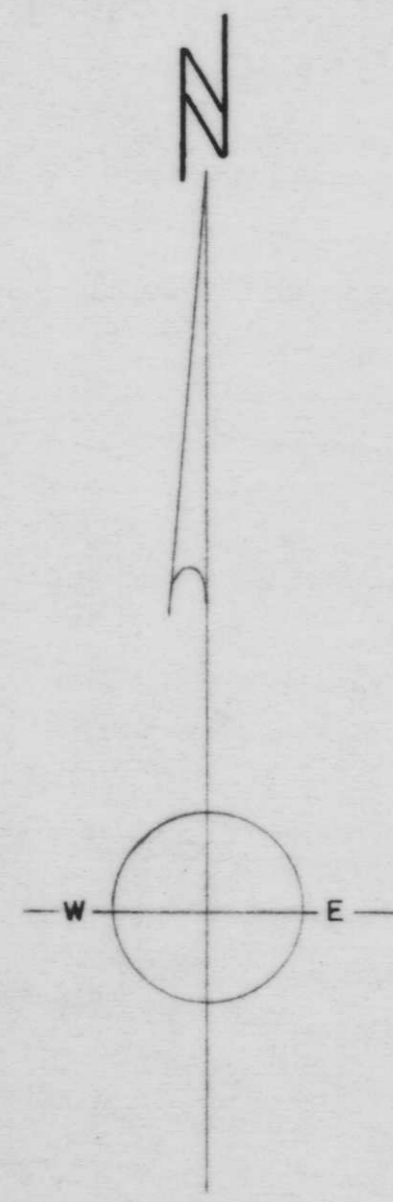
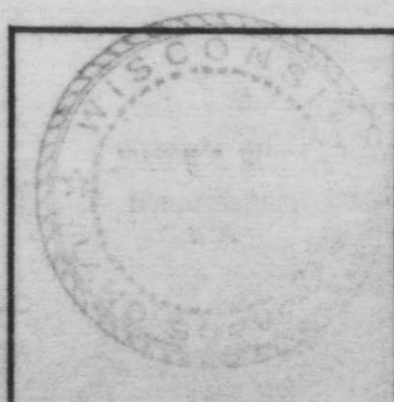


W45A



RECEIVED AT LINCOLN COUNTY COURTHOUSE THIS 21 DAY OF October 1975. Patrick R. Pivale TAX DESCRIPTION OFFICE



414 - SURVEY FOR 352-5151 MARTIN HEISE 315W. NICOLET ST, MILWAUKEE 17, WISCONSIN SCALE 1" = 30' DATE 2-13-64 DWN BY A.G.F. DWG. NO. 3372 GENISOT & ASSOCIATES INC. RHINELANDER, WIS.